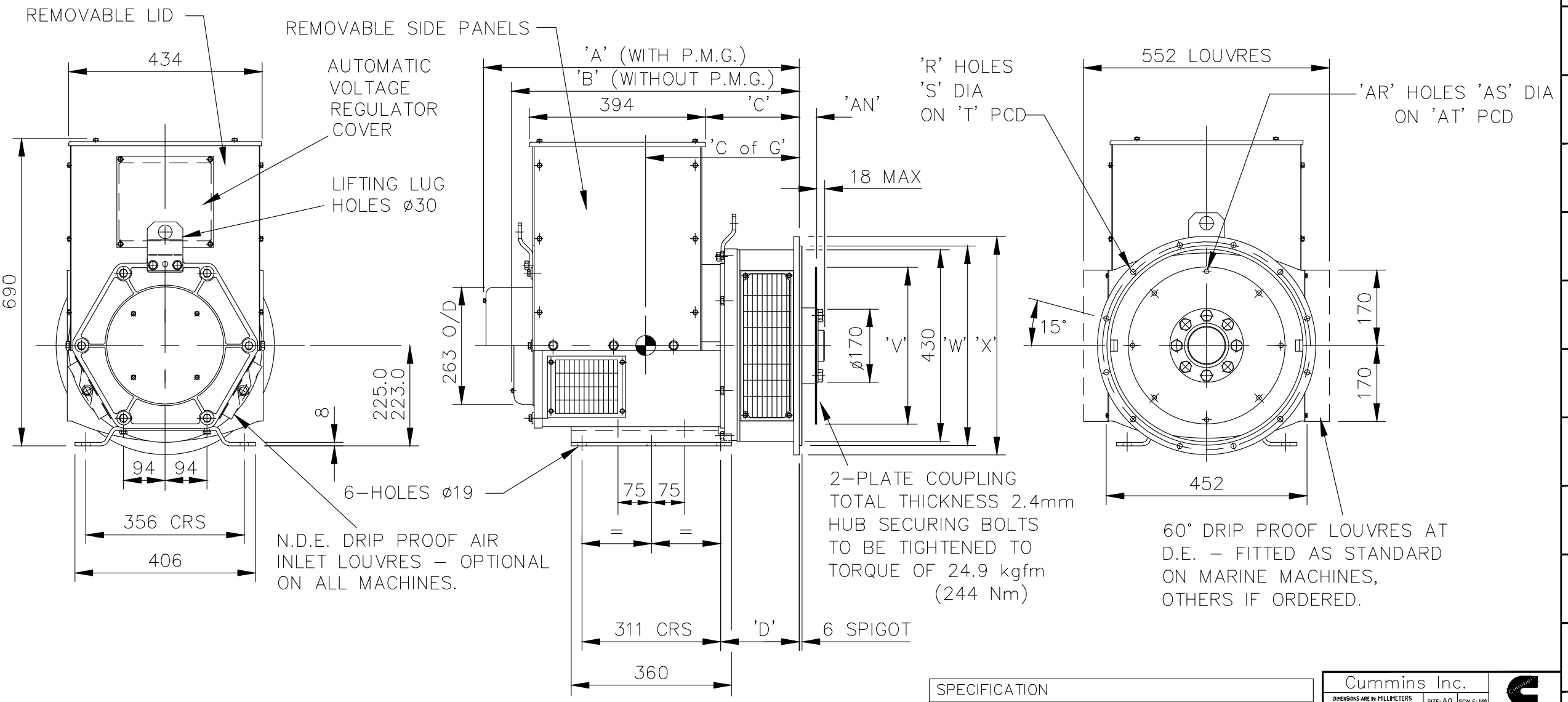


24 23 22 21 20 19 18 17 16 15 14 13 12 11 10 9 8 7 6 5 4 3 2 1

FRAME	DIMENSIONS					NETT WT (Kg)	FLANGE ADAPTORS						DISC COUPLINGS					
	A	B	C	C of G	S.A.E No.		D	R	S	T	W	X	S.A.E No.	AN	AR	AS	AT	V
224C	724.3	661.3	224.3	323	271	1	191.3	12	12.7	530.2	511.1	553	7.5	30.2	8	8.7	222.3	241.2
224D	724.3	661.3	224.3	333	284	2	177	12	11	466.7	447.6	490	8	62	6	11	244.4	263.4
224E	814.3	751.3	314.3	348	311	3	177	12	11	428.6	409.5	451	10	53.8	8	11	295.3	314.2
224F	814.3	751.3	314.3	358	331	4	177	12	11	381	361.9	403	11,5	39.6	8	11	333.3	352.3
224G	859.3	796.3	359.3	373	381								14	25.4	8	13.5	438.2	466.6
224V	769.3	706.3	269.3	358	321													



SPECIFICATION
UC224, C,D,E,F,G,V, 1-BRG, UNIVERSAL FOOT

Cummins Inc.

DIMENSIONS ARE IN MILLIMETERS
UNLESS OTHERWISE SPECIFIED

SIZE: A0 SCALE: 1:10

DIMENSIONING AND TOLERANCING PER: ASME Y14.5M-2009

THIRD ANGLE PROJECTION

CAD SYSTEM AutoCAD

24 23 22 21 20 19 18 17 16 15 14 13 12 11 10 9 8 7 6 5 4 3 2 1



Part Number: 23-2001

Change Notice	CN00009928	Alternates	
Manufacturer Part (MEP)	No	Usage	Production Only
Release Phase Code	Production (P)	Drawing Specification	DS23-2001
External Regulations			

3D image provided when available for visual reference only.

Associated Specifications

Number	Name	Type	Category	Sub-Category
ESA030B356	SPECIFICATION,MATERIAL	Engineering Specification	Material Specification	Prohibited and Restricted Prohibited and Restricted

Drawing Revision Information

Description of Change(s)
SAE7.5 COUPLING OPTION ADDED.

Drawing Authorization

Drafter	Darren George Robert Lee	Date	01OCT2019
Checker	Andrew Savill	Date	01OCT2019
Approver	NO APPROVAL REQUIRED	Date	

Document Generated: 01OCT2019 14:24 GMT