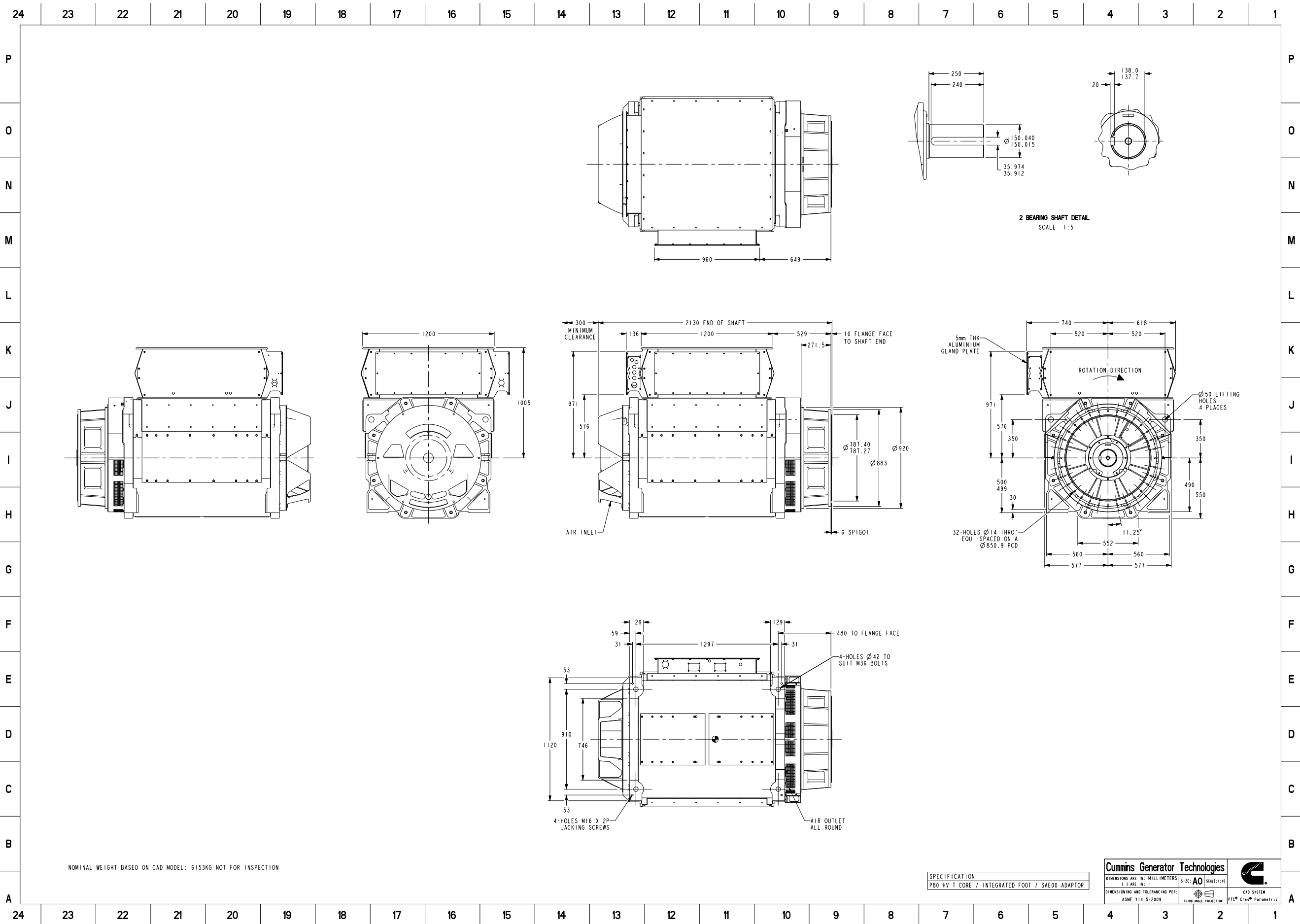


NOMINAL WEIGHT BASED ON CAD MODEL: 6153KG NOT FOR INSPECTION

SPECIFICATION  
P80 HV T CORE / INTEGRATED FOOT / SAE00 ADAPTOR

<b>Cummins Generator Technologies</b>			
DIMENSIONS ARE IN: MILLIMETERS ( ) ARE IN: -		SIZE: <b>A2</b>	SCALE: 1:10
DIMENSIONING AND TOLERANCING PER: ASME Y14.5-2009			CAD SYSTEM PTC® Creo® Parametric

Document Generated: 29APR2020 10:42 GMT



Document Generated: 29APR2020 10:42 GMT



**Part Number: 80-2414**

Change Notice	CN00018430	Alternates	
Manufacturer Part (MEP)	No	Usage	Production Only
Release Phase Code	Production (P)	Drawing Specification	DS80-2414
External Regulations	No External Regulation		

3D image provided when available for visual reference only.

**Associated Specifications**

Number	Name	Type	Category	Sub-Category
ESA030B356	SPECIFICATION,MATERIAL	Engineering Specification	Material Specification	Prohibited and Restricted  Prohibited and Restricted

**Drawing Revision Information**

Description of Change(s)
DIMENSIONING ADDED/CORRECTED

**Drawing Authorization**

Drafter	Andrew Savill	Date	28APR2020
Checker	Darren George Robert Lee	Date	29APR2020
Approver	NO APPROVAL REQUIRED	Date	

Document Generated: 29APR2020 10:42 GMT