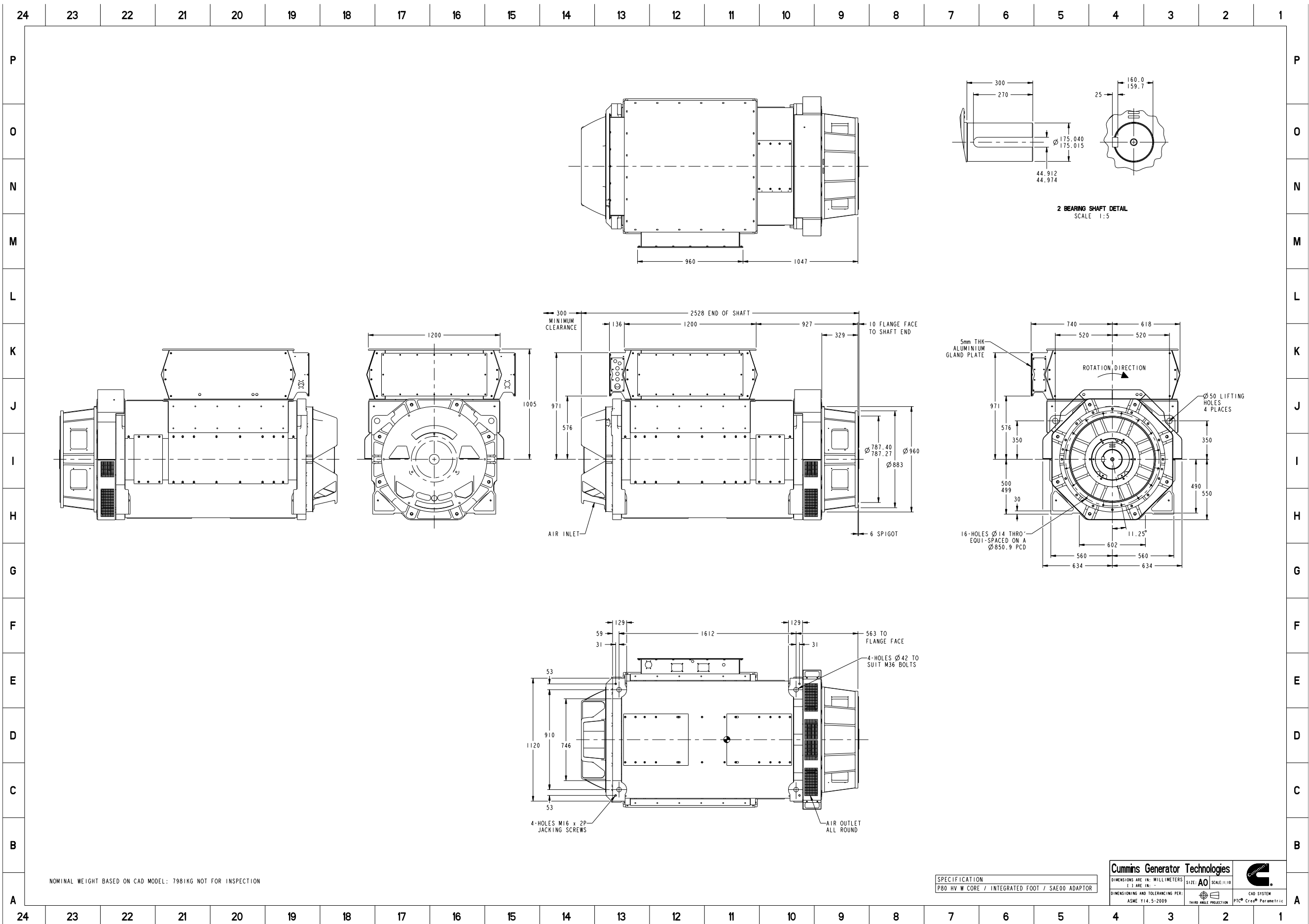


NOMINAL WEIGHT BASED ON CAD MODEL: 7981KG NOT FOR INSPECTION

SPECIFICATION
P80 HV W CORE / INTEGRATED FOOT / SAE00 ADAPTOR

| | | | |
|--|--|----------|-------------------------------------|
| Cummins Generator Technologies | | | |
| DIMENSIONS ARE IN: MILLIMETERS () ARE IN: - | | SIZE: A2 | SCALE: 1:10 |
| DIMENSIONING AND TOLERANCING PER: ASME Y14.5-2009 | | | CAD SYSTEM PTC® Creo® Parametric |



Document Generated: 18JUN2020 13:17 GMT

Cummins Data Classification:
Cummins Confidential

This document (and the information shown thereon) is **Confidential and Proprietary** and shall not be disclosed to others in hard copy or electronic form, reproduced by any means, or used for any purpose without written consent of Cummins Inc.

Part Number: **80-2471** Part Revision: **D**
 Part Name: **ARRANGEMENT,GENERATOR GENERAL**
 Drawing Category: **Outline (Tabulation)** State: **Released** Sheet 2 of 3



Part Number: 80-2471

| | | | |
|-------------------------|------------------------|-----------------------|-----------------|
| Change Notice | CN00020342 | Alternates | |
| Manufacturer Part (MEP) | No | Usage | Production Only |
| Release Phase Code | Production (P) | Drawing Specification | DS80-2471 |
| External Regulations | No External Regulation | | |

3D image provided when available for visual reference only.

Associated Specifications

| Number | Name | Type | Category | Sub-Category |
|------------|------------------------|---------------------------|------------------------|---|
| ESA030B356 | SPECIFICATION,MATERIAL | Engineering Specification | Material Specification | Prohibited and Restricted Prohibited and Restricted |

Drawing Revision Information

| Description of Change(s) |
|------------------------------|
| DIMENSIONING ADDED/CORRECTED |

Drawing Authorization

| | | | |
|----------|----------------------|------|-----------|
| Drafter | Andrew Savill | Date | 18JUN2020 |
| Checker | Tony Charles Clarke | Date | 18JUN2020 |
| Approver | NO APPROVAL REQUIRED | Date | |

Document Generated: 18JUN2020 13:17 GMT