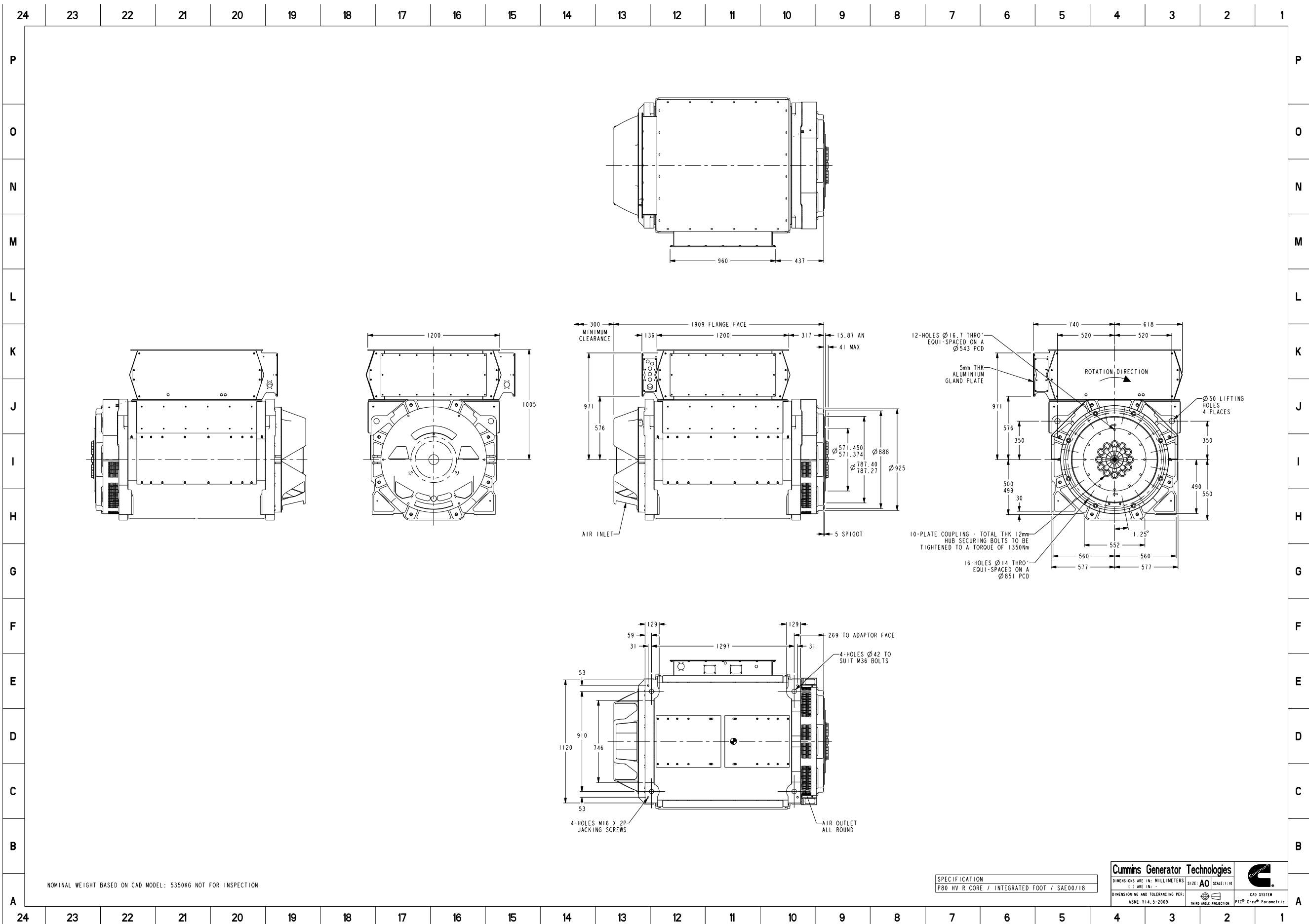


NOMINAL WEIGHT BASED ON CAD MODEL: 5350KG NOT FOR INSPECTION

SPECIFICATION
P80 HV R CORE / INTEGRATED FOOT / SAE00/18

<b>Cummins Generator Technologies</b>		
DIMENSIONS ARE IN: MILLIMETERS ( ) ARE IN: -	SIZE: <b>A2</b> SCALE: 1:10	
DIMENSIONING AND TOLERANCING PER: ASME Y14.5-2009		CAD SYSTEM PTC® Creo® Parametric

Document Generated: 25SEP2020 10:42 GMT



Document Generated: 25SEP2020 10:42 GMT



**Part Number: 80-2485**

Change Notice	CN00024195	Alternates	
Manufacturer Part (MEP)	No	Usage	Production Only
Release Phase Code	Production (P)	Drawing Specification	DS80-2485
External Regulations		No External Regulation	

3D image provided when available for visual reference only.

**Associated Specifications**

Number	Name	Type	Category	Sub-Category
ESA030B356	SPECIFICATION,MATERIAL	Engineering Specification	Material Specification	Prohibited and Restricted  Prohibited and Restricted

**Drawing Revision Information**

Description of Change(s)
END BRACKETS, WEIGHT, C OF G AND DRAWING BORDER UPDATED.

**Drawing Authorization**

Drafter	Andrew Savill	Date	24SEP2020
Checker	Tony Charles Clarke	Date	25SEP2020
Approver	NO APPROVAL REQUIRED	Date	

Document Generated: 25SEP2020 10:42 GMT