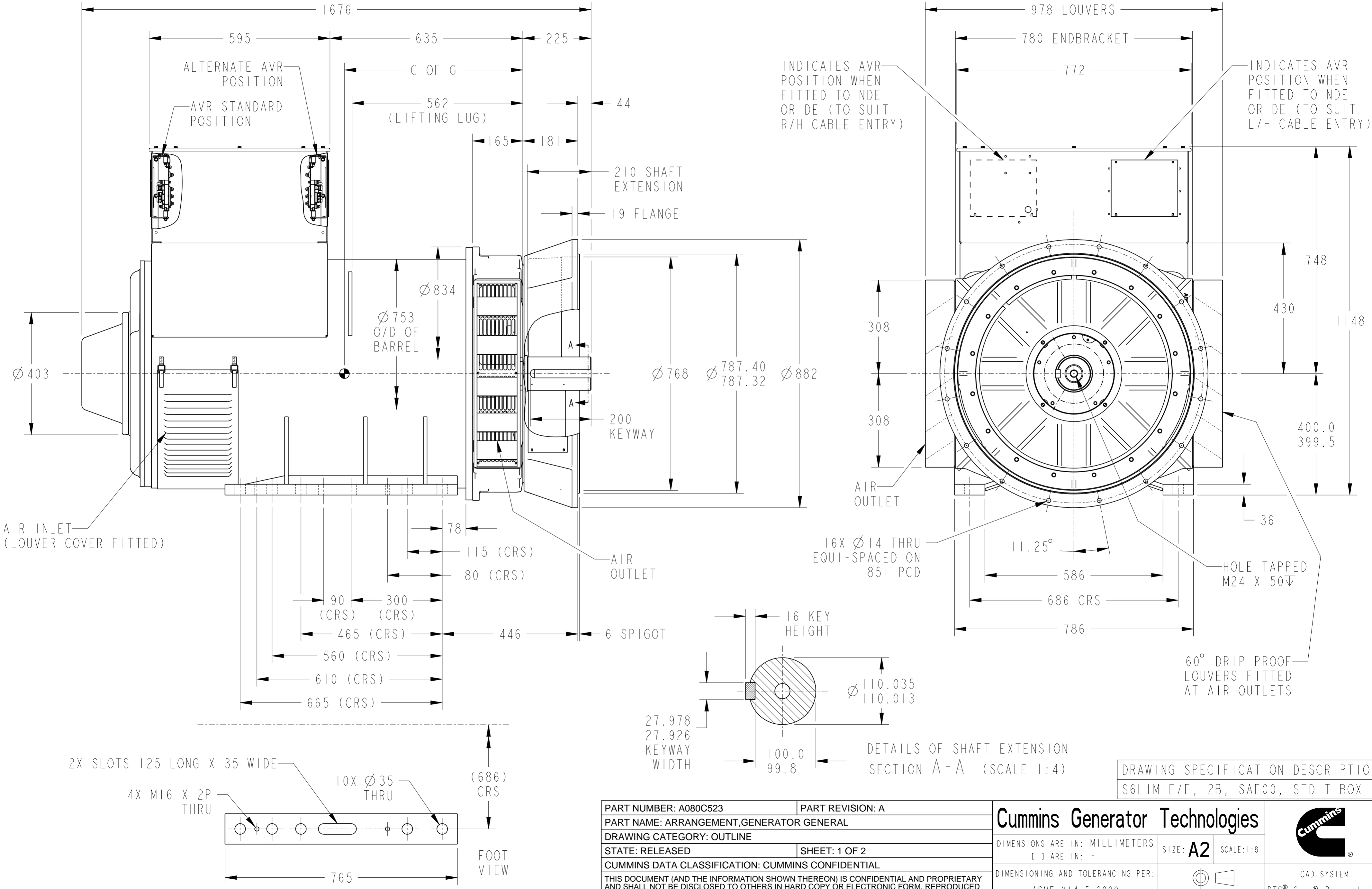


|      |             |        |   |   |   |   |   |   |   |   |   |
|------|-------------|--------|---|---|---|---|---|---|---|---|---|
| 12   | 11          | 10     | 9 | 8 | 7 | 6 | 5 | 4 | 3 | 2 | 1 |
| CORE | WEIGHT (KG) | C OF G |   |   |   |   |   |   |   |   |   |
| E    | 2110        | 563    |   |   |   |   |   |   |   |   |   |
| F    | 2417        | 587    |   |   |   |   |   |   |   |   |   |

NOTE:  
1. CUSTOMER MUST ENSURE THAT AIR INLET AND OUTLET POSITIONS ARE NOT OBSTRUCTED



|  |                  |
|--|------------------|
| PART NUMBER: A080C523  | PART REVISION: A |
| PART NAME: ARRANGEMENT, GENERATOR GENERAL  |                  |
| DRAWING CATEGORY: OUTLINE  |                  |
| STATE: RELEASED  | SHEET: 1 OF 2    |
| CUMMINS DATA CLASSIFICATION: CUMMINS CONFIDENTIAL  |                  |
| THIS DOCUMENT (AND THE INFORMATION SHOWN THEREON) IS CONFIDENTIAL AND PROPRIETARY AND SHALL NOT BE DISCLOSED TO OTHERS IN HARD COPY OR ELECTRONIC FORM, REPRODUCED BY ANY MEANS, OR USED FOR ANY PURPOSE WITHOUT WRITTEN CONSENT OF CUMMINS INC. |                  |

|  |                     |                                     |
|--|---------------------|-------------------------------------|
| <b>Cummins Generator Technologies</b>                |                     |                                     |
| DIMENSIONS ARE IN: MILLIMETERS<br>[ ] ARE IN: -      | SIZE: A2 SCALE: 1:8 |                                     |
| DIMENSIONING AND TOLERANCING PER:<br>ASME Y14.5-2009 |                     | CAD SYSTEM<br>PTC® Creo® Parametric |

DRAWING SPECIFICATION DESCRIPTION  
S6LIM-E/F, 2B, SAE00, STD T-BOX

4

3

2

1

D



Part Number: A080C523

|                         |                        |                       |                    |
|-------------------------|------------------------|-----------------------|--------------------|
| Change Notice           | CN00209795             | Alternates            |                    |
| Manufacturer Part (MEP) | No                     | Usage                 | Production Only    |
| Release Phase Code      | Production (P)         | Drawing Specification | Number: DS47179327 |
| External Regulations    | No External Regulation |                       | Revision: A        |

3D image provided when available for visual reference only.

C

Drawing Revision Information

|  |
|--|
| <b>Description of Change(s)</b><br>Note: Change information is provided for reference only and does not supersede the drawing's primary content. |
| DRAWING - PRODUCTION RELEASE   |
| PART - PRODUCTION RELEASE  |

Drawing Authorization

|          |                      |      |           |
|----------|----------------------|------|-----------|
| Drafter  | Tony C Clarke        | Date | 08DEC2025 |
| Checker  | Darren G Lee         | Date | 11DEC2025 |
| Approver | NO APPROVAL REQUIRED | Date |           |

B

A

Cummins Data Classification: **Cummins Confidential** This document (and the information shown thereon) is **Confidential and Proprietary** and shall not be disclosed to others in hard copy or electronic form, reproduced by any means, or used for any purpose without written consent of Cummins Inc.

Part Number: **A080C523** Part Revision: **A**  
 Part Name: **ARRANGEMENT,GENERATOR GENERAL**  
 Drawing Category: **Outline** State: **Released** Sheet **2** of **2**

4

3

2

1