

A7L1D-D6 Wdg.412 - Technical Data Sheet

Standards

STAMFORD | AvK industrial alternators meet the requirements of the relevant parts of the IEC 60034 and the relevant sections of other international standards such as BS5000-3, ISO 8528-3, VDE 0530, NEMA MG1-32, CSA C22.2-100 and AS 60034. Other standards and certifications can be considered on request.

Quality Assurance

Alternators are manufactured using production procedures having a quality assurance level to BS EN ISO 9001.



Excitation and Voltage Regulators

Excitation System					
AVR Type	DECS150	DECS100	DM110		
Voltage Regulation	± 0.25%	± 0.25%	± 0.25%		with 4% Engine Governing
AVR Power	PMG	PMG	PMG		

No Load Excitation Voltage (V)	21.50 - 20.70
No Load Excitation Current (A)	1.02 - 0.99
Full Load Excitation Voltage (V)	87
Full Load Excitation Current (A)	3.8
Exciter Time Constant (seconds)	0.251

STAMFORD | AvK

A7L1D-D6 Wdg.412

Electrical Data								
Insulation System	H							
Stator Winding	Double Layer Concentric							
Winding Pitch	5/6							
Winding Leads	6							
Winding Number	412							
Number of Poles	6							
IP Rating	IP23							
RFI Suppression	BS EN 61000-6-2 & BS EN 61000-6-4, VDE 0875G, VDE 0875N. Refer to factory for others							
Waveform Distortion	NO LOAD < 1.5% NON-DISTORTING BALANCED LINEAR LOAD < 5.0%							
Short Circuit Ratio	1/Xd							
Steady State X/R Ratio	22.39							
50 Hz					60 Hz			
Telephone Interference	THF<2%				TIF<50			
Cooling Air Flow	1.75 m³/sec				2.11 m³/sec			
Voltage Star (V)	380	400	415	440	416	440	460	480
Voltage Parallel Star (V)	-	-	-	-	-	-	-	-
Voltage Delta (V)	-	-	-	-	-	-	-	-
kVA Base Rating (Class H) for Reactance Values (kVA)	1200	1250	1250	1130	1300	1375	1438	1500
Saturated Values in Per Unit at Base Ratings and Voltages								
Xd Dir. Axis Synchronous	2.46	2.31	2.15	1.73	2.67	2.52	2.41	2.31
X'd Dir. Axis Transient	0.21	0.20	0.18	0.15	0.23	0.22	0.21	0.20
X''d Dir. Axis Subtransient	0.15	0.14	0.13	0.10	0.16	0.15	0.14	0.14
Xq Quad. Axis Reactance	2.09	1.96	1.82	1.47	2.27	2.14	2.05	1.96
X''q Quad. Axis Subtransient	0.32	0.30	0.28	0.22	0.35	0.33	0.31	0.30
XL Stator Leakage Reactance	0.26	0.25	0.23	0.18	0.28	0.27	0.26	0.25
X2 Negative Sequence Reactance	0.23	0.21	0.20	0.16	0.25	0.23	0.22	0.21
X0 Zero Sequence Reactance	0.14	0.13	0.12	0.10	0.15	0.14	0.13	0.13
Unsaturated Values in Per Unit at Base Ratings and Voltages								
Xd Dir. Axis Synchronous	2.95	2.78	2.58	2.07	3.20	3.03	2.90	2.78
X'd Dir. Axis Transient	0.24	0.23	0.21	0.17	0.26	0.25	0.24	0.23
X''d Dir. Axis Subtransient	0.17	0.16	0.15	0.12	0.18	0.17	0.17	0.16
Xq Quad. Axis Reactance	2.15	2.02	1.88	1.51	2.33	2.21	2.11	2.02
X''q Quad. Axis Subtransient	0.38	0.36	0.33	0.27	0.41	0.39	0.37	0.36
XL Stator Leakage Reactance	0.29	0.28	0.26	0.21	0.32	0.30	0.29	0.28
Xlr Rotor Leakage Reactance	0.16	0.16	0.14	0.12	0.18	0.17	0.16	0.16
X2 Negative Sequence Reactance	0.27	0.26	0.24	0.19	0.30	0.28	0.27	0.26
X0 Zero Sequence Reactance	0.16	0.15	0.14	0.11	0.17	0.16	0.16	0.15

STAMFORD | AvK

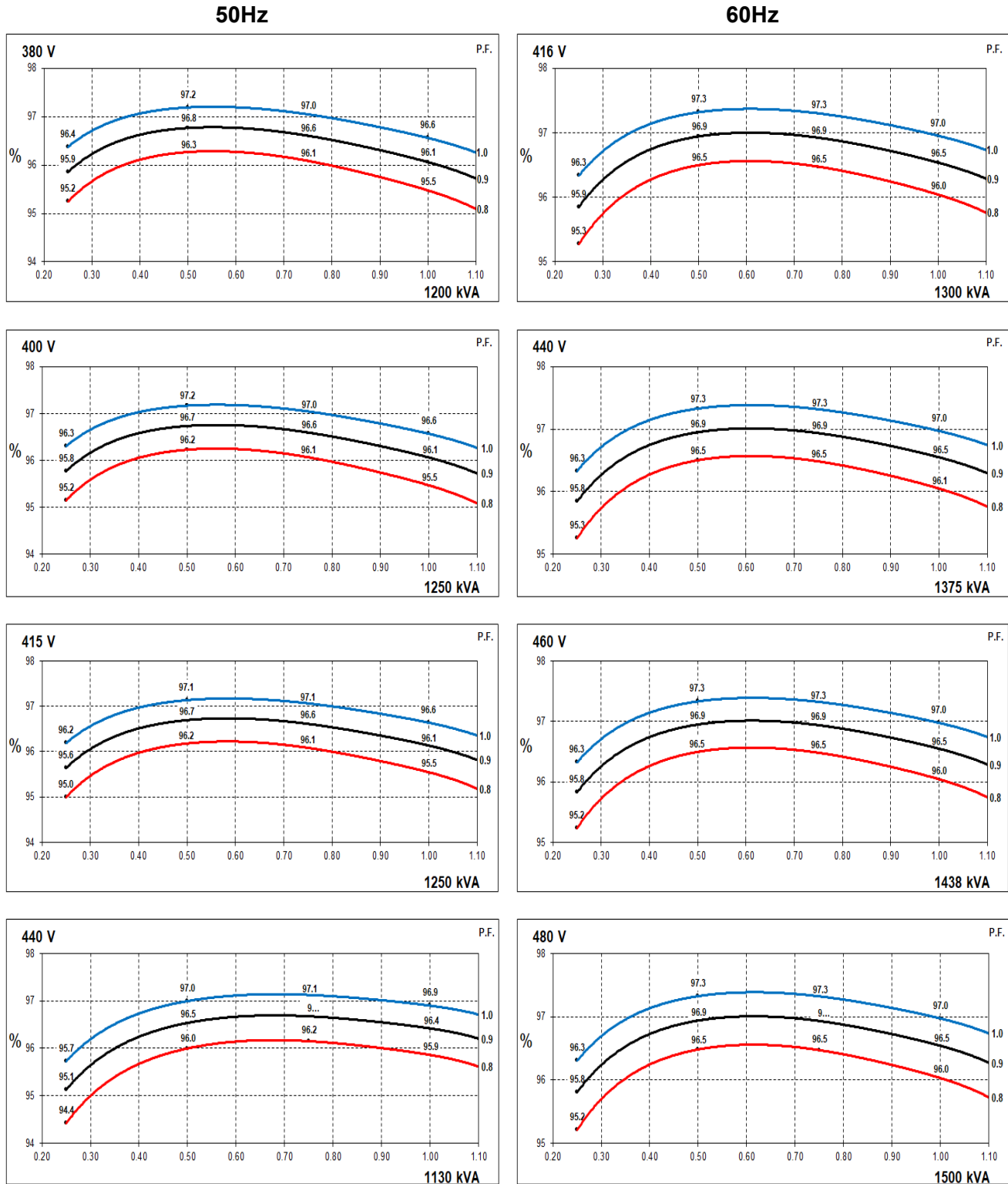
A7L1D-D6 Wdg.412

Time Constants (Seconds)		
T'd Transient Time Const.	0.115	
T''d Sub-Transient Time Const.	0.019	
T'do O.C. Field Time Const.	2.600	
Ta Armature Time Const.	0.031	
T''q Sub-Transient Time Const.	0.1030	
Resistances in Ohms (Ω) at 22°C		
Stator Winding Resistance (Ra), per phase for series connected	0.00167	
Rotor Winding Resistance (Rf)	2.566	
Exciter Stator Winding Resistance	20.46	
Exciter Rotor Winding Resistance per phase	0.137	
PMG Phase Resistance (Rpmg) per phase	4.11	
Positive Sequence Resistance (R1)	0.0021	
Negative Sequence Resistance (R2)	0.0024	
Zero Sequence Resistance (R0)	0.0021	
Saturation Factors	400V	480V
SG1.0	0.31	0.339
SG1.2	1.163	0.858
Mechanical Data		
Shaft and Keys	All alternator rotors are dynamically balanced to better than ISO 21940-11 Grade 2.5 for minimum vibration in operation. Two bearing generators are balanced with a half key.	
	1 Bearing	2 Bearing
SAE Adaptor	SAE0, 00	SAE0,00
Moment of Inertia	49.36 kgm ²	48.46 kgm ²
Weight Wound Stator	856kg	856kg
Weight Wound Rotor	946kg	946kg
Weight Complete Alternator	2952kg	2926kg
Shipping weight in a Crate	3001kg	2975kg
Packing Crate Size	200*105*155(cm)	200*105*155(cm)
Maximum Over Speed	1500 RPM for two minutes	
Bearing Drive End	-	BALL 6228
Bearing Non-Drive End	BALL 6319	BALL 6319

STAMFORD | AvK

A7L1D-D6 Wdg.412

THREE PHASE EFFICIENCY CURVES

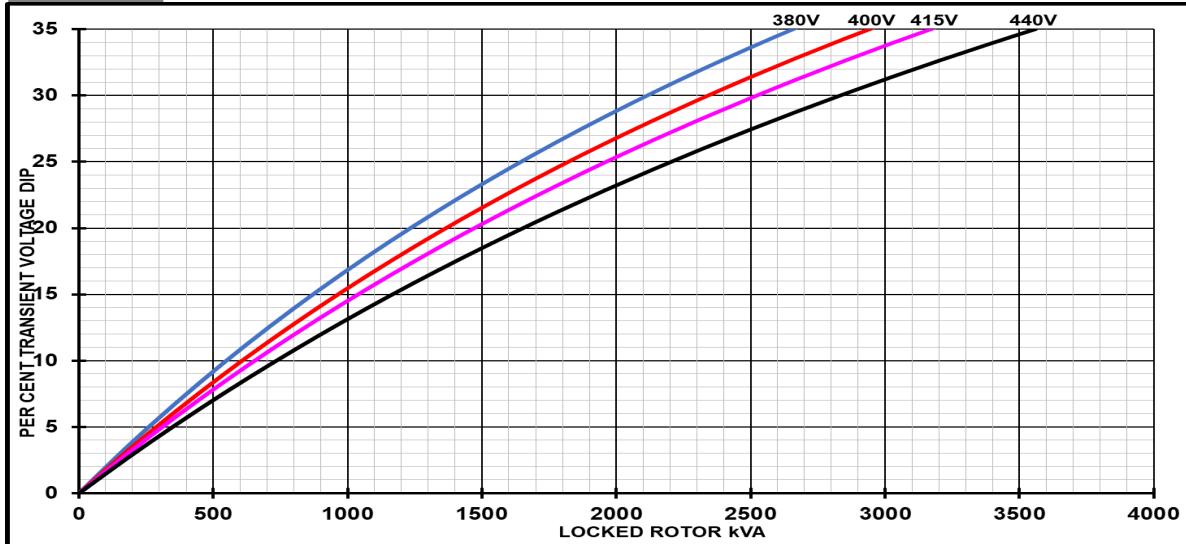


STAMFORD | AvK

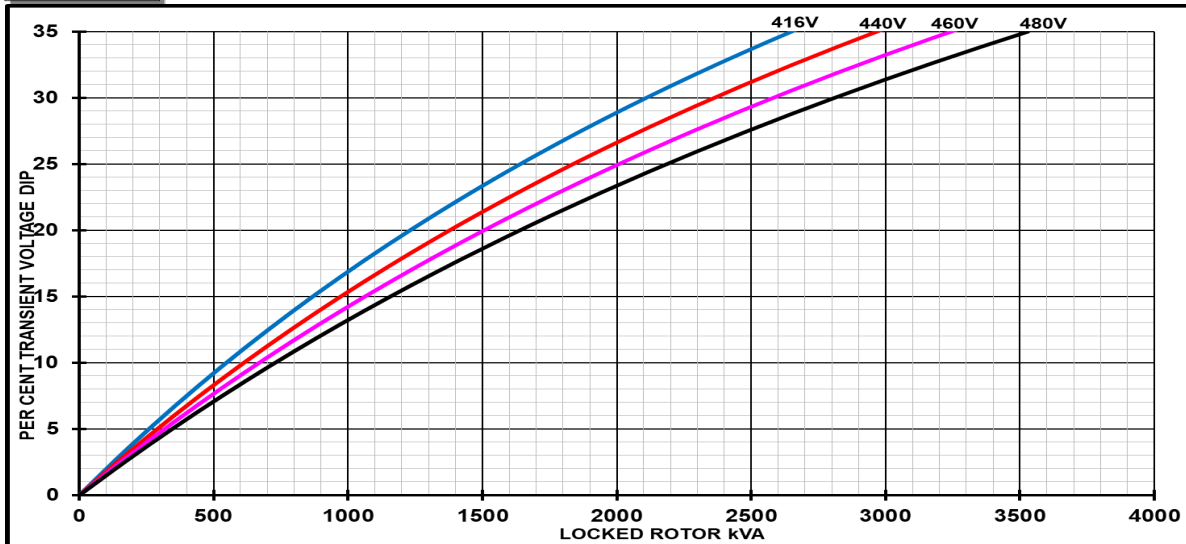
A7L1D-D6 Wdg.412

Locked Rotor Motor Starting Curves - Separately Excited

50Hz



60Hz



Transient Voltage Dip Scaling Factor		Transient Voltage Rise Scaling Factor	
Lagging PF	Scaling Factor	Lagging PF	Scaling Factor
<= 0.4	1.00	<= 0.4	1.25
0.5	0.95	0.5	1.20
0.6	0.90	0.6	1.15
0.7	0.86	0.7	1.10
0.8	0.83	> 0.7	1.00
0.9	0.75		
0.95	0.70		
1	0.65		

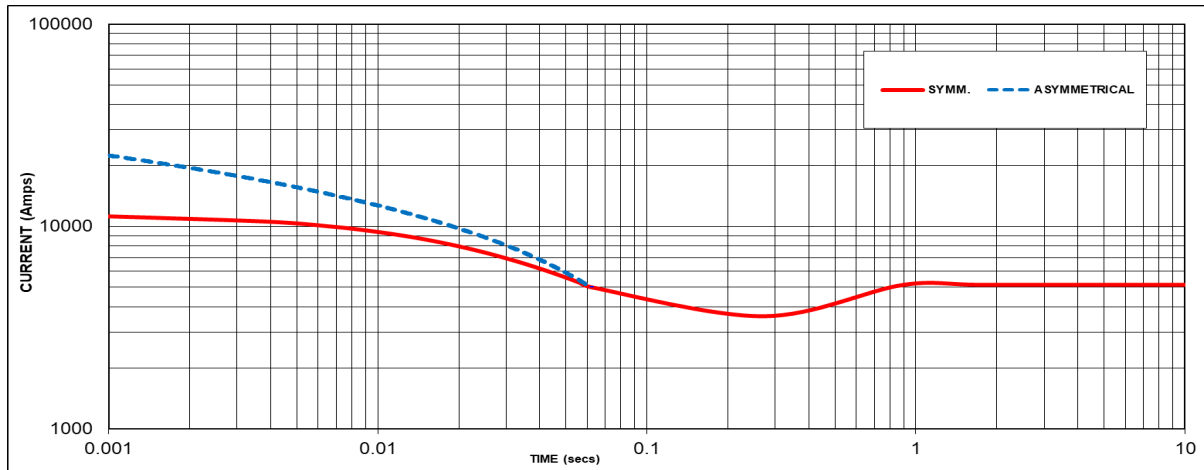
Note: To determine % Transient Voltage Dip or Voltage Rise at various PF, multiply the % Voltage Dip from the curve directly by the Scaling Factor.

STAMFORD | AvK

A7L1D-D6 Wdg.412

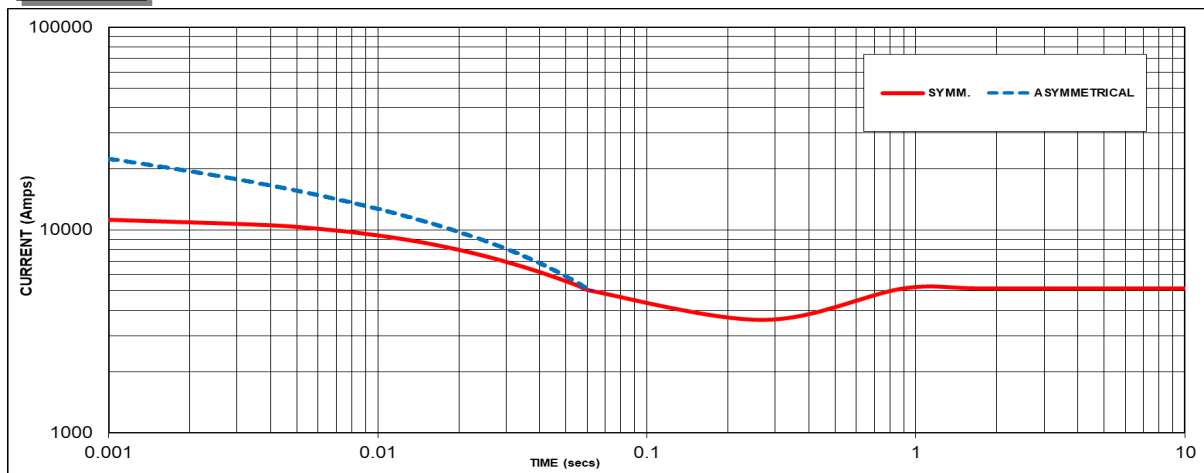
Three-phase Short Circuit Decrement Curve - Separately Excited

50Hz



Sustained Short Circuit = 4470 Amps

60Hz



Sustained Short Circuit = 5140 Amps

Note 1

The following multiplication factors should be used to adjust the values from curve between time 0.001 seconds and the minimum current point in respect of nominal operating voltage :

50Hz		60Hz	
Voltage	Factor	Voltage	Factor
380V	X 1.00	416V	X 1.00
400V	X 1.07	440V	X 1.06
415V	X 1.12	460V	X 1.12
440V	X 1.18	480V	X 1.17

The sustained current value is constant irrespective of voltage level

Note 2

The following multiplication factor should be used to convert the values calculated in accordance with NOTE 1 to those applicable to the various types of short circuit :

	3-phase	2-phase L-L	1-phase L-N
Instantaneous	x 1.00	x 0.87	x 1.30
Minimum	x 1.00	x 1.80	x 3.20
Sustained	x 1.00	x 1.50	x 2.50
Max. sustained duration	10 sec.	5 sec.	2 sec.

Note 3

All other times are unchanged

Curves are drawn for Star connections under no-load excitation at rated speeds. For other connection (where applicable) the following multipliers should be applied to current values as shown :

Parallel Star = Curve current value X 2

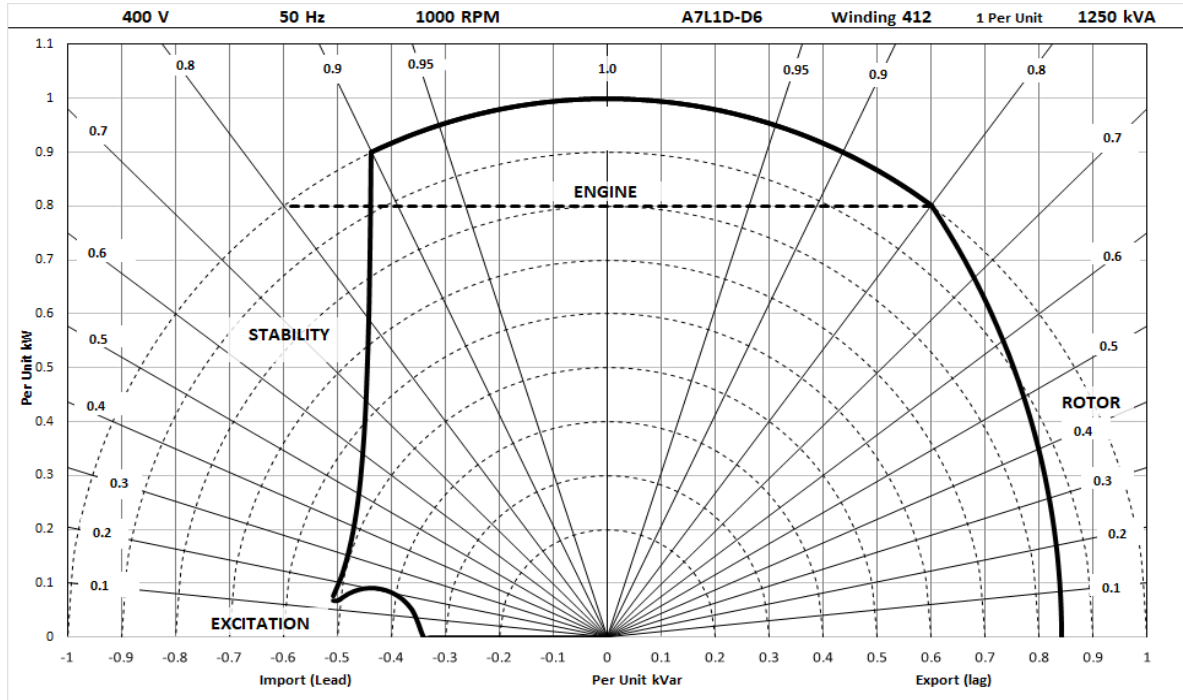
Series Delta = Curve current value X 1.732

STAMFORD | AvK

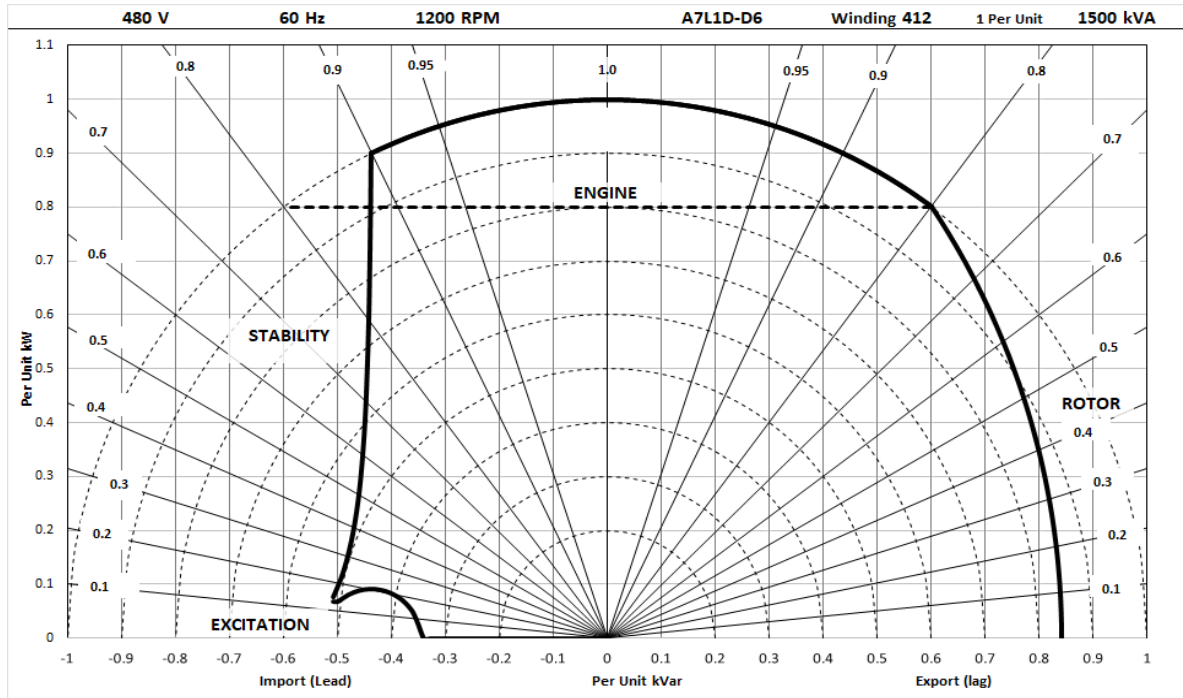
A7L1D-D6 Wdg.412

Typical Alternator Operating Charts

400V/50Hz



480V/60Hz



STAMFORD | AvK

A7L1D-D6 Wdg.412

RATINGS AT 0.8 POWER FACTOR

Class - Temp Rise		Standby - 163/27°C				Standby - 150/40°C				Cont. H - 125/40°C				Cont. F - 105/40°C			
50 Hz	Star (V)	380	400	415	440	380	400	415	440	380	400	415	440	380	400	415	440
	Parallel Star (V)	N/A	N/A	N/A	N/A	N/A	N/A	N/A	N/A	N/A	N/A	N/A	N/A	N/A	N/A	N/A	N/A
	Delta (V)	N/A	N/A	N/A	N/A	N/A	N/A	N/A	N/A	N/A	N/A	N/A	N/A	N/A	N/A	N/A	N/A
	kVA	1280	1340	1340	1210	1250	1300	1300	1175	1200	1250	1250	1130	1080	1125	1125	1040
	kW	1024	1072	1072	968	1000	1040	1040	940	960	1000	1000	904	864	900	900	832
	Efficiency (%)	95.3	95.2	95.3	95.7	95.3	95.3	95.4	95.8	95.5	95.5	95.5	95.9	95.8	95.8	95.8	96.0
	kW Input	1075	1126	1125	1011	1049	1091	1090	981	1005	1047	1047	943	902	940	939	867

60 Hz	Star (V)	416	440	460	480	416	440	460	480	416	440	460	480	416	440	460	480
	Parallel Star (V)	N/A	N/A	N/A	N/A	N/A	N/A	N/A	N/A	N/A	N/A	N/A	N/A	N/A	N/A	N/A	N/A
	Delta (V)	N/A	N/A	N/A	N/A	N/A	N/A	N/A	N/A	N/A	N/A	N/A	N/A	N/A	N/A	N/A	N/A
	kVA	1400	1475	1538	1606	1356	1431	1500	1563	1300	1375	1438	1500	1169	1238	1294	1350
	kW	1120	1180	1230	1285	1085	1145	1200	1250	1040	1100	1150	1200	935	990	1035	1080
	Efficiency (%)	95.8	95.9	95.9	95.8	95.9	95.9	95.9	95.9	96.0	96.1	96.0	96.0	96.3	96.3	96.3	96.3
	kW Input	1169	1231	1283	1341	1131	1193	1251	1304	1083	1145	1198	1250	972	1029	1075	1122

De-rates

All values tabulated above are subject to the following reductions:

- 5% when air inlet filters are fitted
- 3% for every 500 meters by which the operating altitude exceeds 1000 meters above mean sea level
- 3% for every 5°C by which the operational ambient temperature exceeds 40°C @ Class H temperature rise (please refer to applications for ambient temperature de-rates at other temperature rise classes)
- For marine alternators, 3% for every 5°C by which the operational ambient temperature exceeds 50°C
- For any other operating conditions impacting the cooling circuit please refer to applications

Note: Requirement for operating in an ambient exceeding 60°C and altitude exceeding 4000 meters (for <690V) or 1500 meters (for >690V) must be referred to applications.

Dimensional and Torsional Drawing

For dimensional and torsional information please refer to the alternator General Arrangement and rotor drawings available on our website (<http://stamford-avk.com/>)

Note: Continuous development of our products means that the information contained in our data sheets can change without notice, and specifications should always be confirmed with Cummins Generator Technologies prior to purchase.



Follow us @stamfordavk



Cummins Generator Technologies



View our videos at youtube.com/stamfordavk

stamford-avk.com

For Applications Support:
applications@cummins.com

For Customer Service:
emea.service@cummins.com

For General Enquiries:
Stamford-avk@cummins.com

Copyright 2025. Cummins Generator Technologies Ltd. All rights reserved.
Cummins and the Cummins logo are registered trade marks of Cummins Inc.
STAMFORD is a registered trade mark of Cummins Generator Technologies Ltd.

