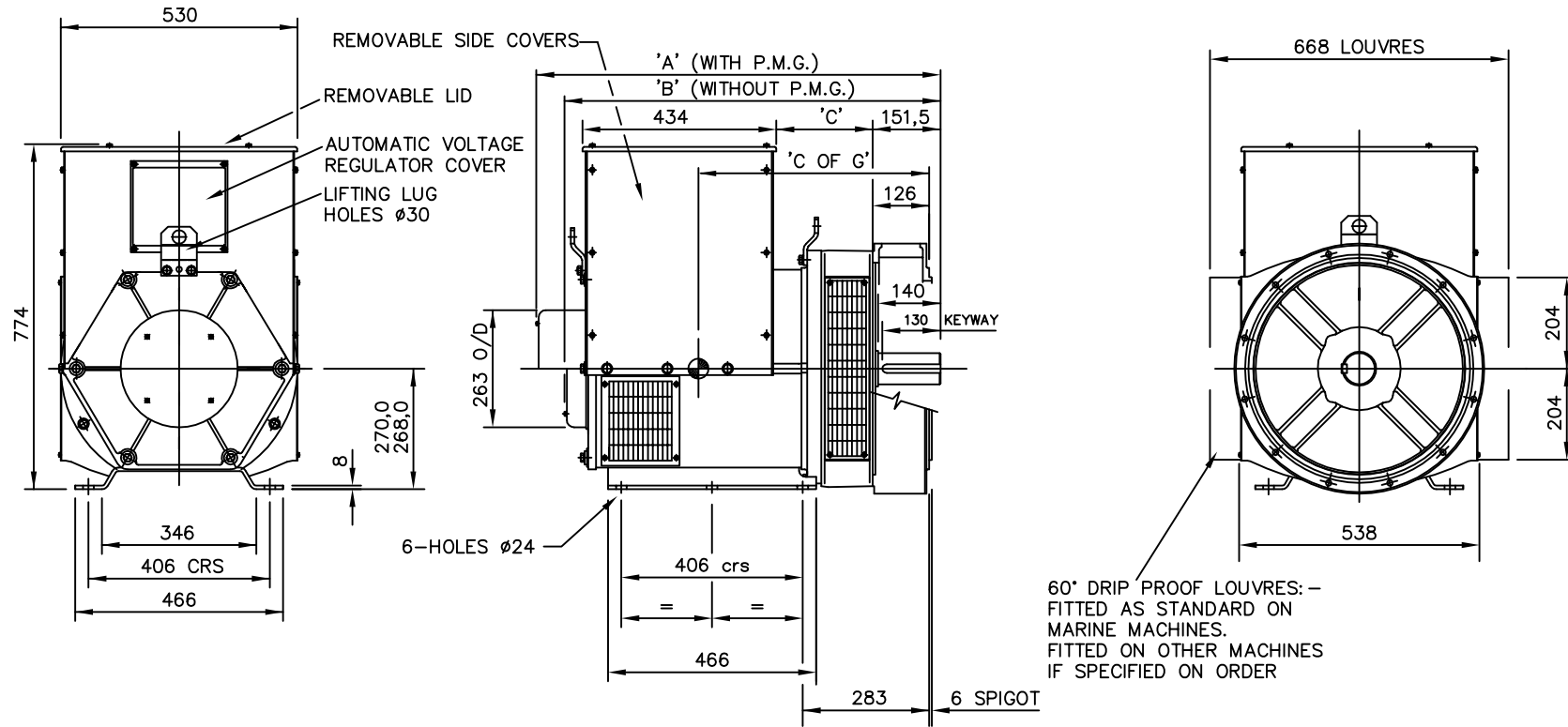
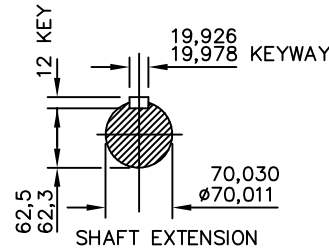


| | | | | | | |
|------------|-----|--------------------|-----|-----|------|---------|
| REL NO | REV | DETAILS | DWN | CDK | APVD | DATE |
| ECO-143331 | G | ADDED UCG IN TITLE | SS | SPA | SPA | 03MAY14 |

| DIMENSIONS | | | |
|------------|------|------|-----|
| FRAME | A | B | C |
| 274C/D | 905 | 842 | 215 |
| 274E/F | 1020 | 957 | 330 |
| 274G | 1070 | 1007 | 380 |
| 274H | 1110 | 1047 | 420 |

| CORE | C OF G | NETT WT.kg |
|------|--------|------------|
| C | 420 | 394 |
| D | 430 | 418 |
| E | 445 | 481 |
| F | 470 | 519 |
| G | 490 | 571 |
| H | 510 | 617 |

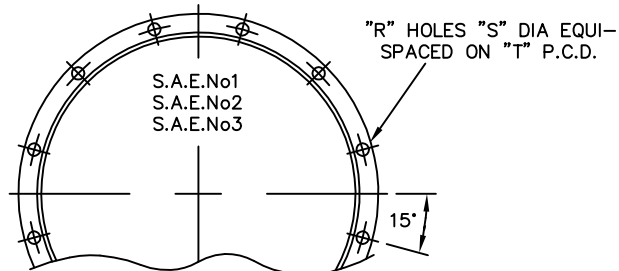
NOTE: -
WEIGHTS DO NOT INCLUDE SAE ADAPTOR FLANGES



FOR FLANGE ADAPTOR DETAILS SEE SHEET 2

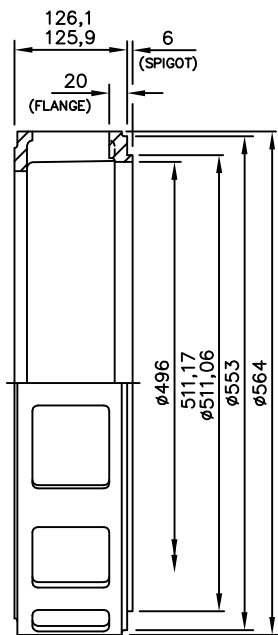
| | | | | |
|--|-------------------|-----------|--------------------------------|---------|
| UNLESS SPECIFIED ALL DIMENSIONS ARE IN MILLIMETERS | | | CUMMINS GENERATOR TECHNOLOGIES | |
| DO NOT SCALE PRINT | DRAWN JES | | DRAWING, GENERAL ASSEMBLY | |
| | CHECKED PJW | | UC274/UCG274 C-H 2-BRG | |
| CONFIDENTIAL | DATE 29JAN91 | SITE CODE | UNIVERSAL FEET | |
| PROPERTY OF CUMMINS | SCALE 1:10 | STA | DWG SIZE A2 | SHEET 1 |
| GENERATOR TECHNOLOGIES | FIRST USED ON --- | | 33-2002 | REV G |

| | | | | | | |
|------------|-----|--------------------|-----|-----|------|---------|
| REL NO | REV | DETAILS | DWN | CDK | APVD | DATE |
| ECO-143331 | G | ADDED UCG IN TITLE | SS | SPA | SPA | 03MAY14 |

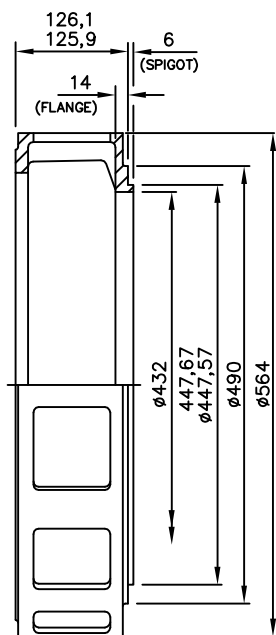


12-HOLE ARRANGEMENT

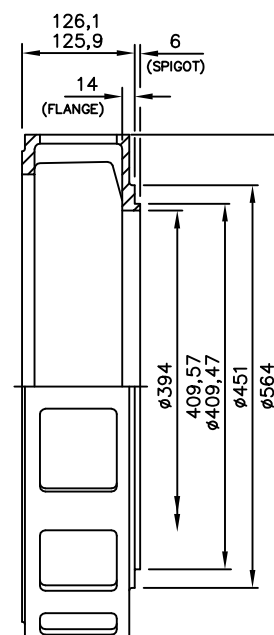
| FLANGE ADAPTOR | | | |
|----------------|-----|------|-------|
| S.A.E No | "R" | "S" | "T" |
| 1 | 12 | 12,7 | 530,2 |
| 2 | 12 | 11 | 466,7 |
| 3 | 12 | 11 | 428,6 |
| | | | |
| | | | |



S.A.E.No1



S.A.E.No2



S.A.E.No3

SEE SHEET 1 FOR MACHINE DETAILS

| | | | | | | | |
|--|--------------|-------------------|--------------------------------|-------------|---------|---------|-------|
| UNLESS SPECIFIED ALL DIMENSIONS ARE IN MILLIMETERS | | | CUMMINS GENERATOR TECHNOLOGIES | | | | |
| DO NOT SCALE PRINT | DRAWN CB | | UC274/UCG274 C-H CORES | | | | |
| | CHECKED PJW | | 2-BRG FLANGE ADAPTORS | | | | |
| CONFIDENTIAL | DATE 14SEP92 | SITE CODE | STA | DWG SIZE A2 | 33-2002 | SHEET 2 | REV G |
| PROPERTY OF CUMMINS GENERATOR TECHNOLOGIES | SCALE 1:5 | FIRST USED ON --- | | | | | |