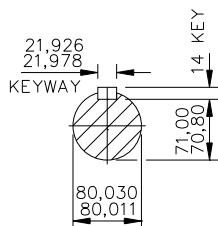
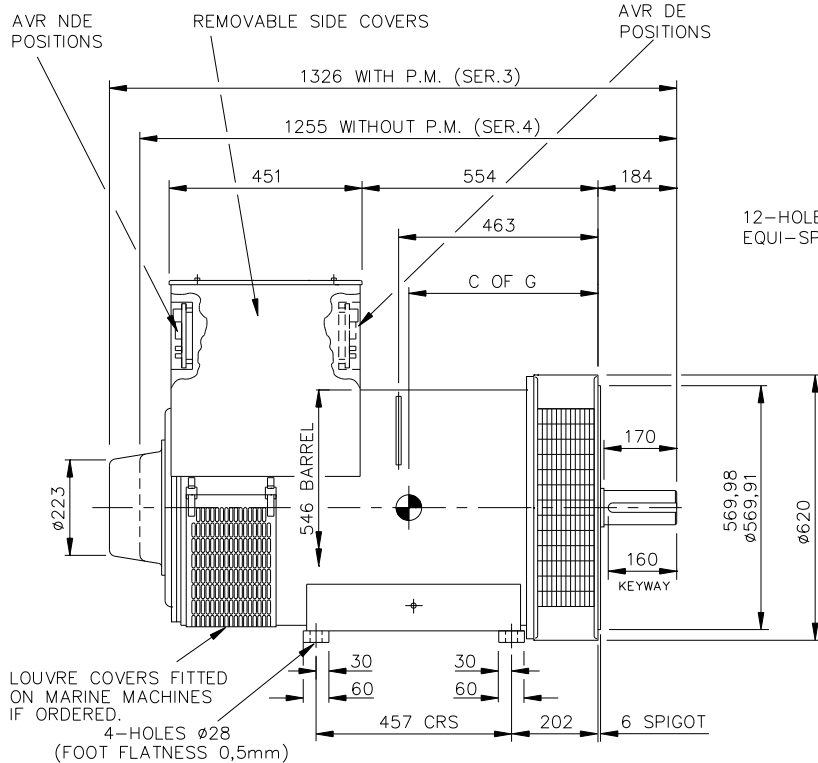


REL NO	REV	DETAILS	DWN	CKD	APVD	DATE
ECO-130105	G	AVR VIEWS & NOTES UPDATED	NNG	APM	SMH	15NOV12

CORE	C OF G
C	433
D	453
E	474



DETAIL OF SHAFT EXTENSION.



LOUVRE COVERS FITTED ON MARINE MACHINES IF ORDERED.

4-HOLES Ø28 (FOOT FLATNESS 0,5mm)

AVR POSITION WHEN FITTED TO NDE OR DE (TO SUIT R/H CABLE ENTRY)

AVR POSITION WHEN FITTED TO NDE OR DE (TO SUIT L/H CABLE ENTRY)

12-HOLES M10x1,5p EQUI-SPACED ON 590 PCD.

1-HOLE M20x2,5p x 40 DEEP.

60° DRIP PROOF LOUVRES FITTED AS STANDARD ON MARINE MACHINES OTHERS IF ORDERED.

NOTE: - CUSTOMER MAY CUT CABLE ENTRY HOLES AS REQUIRED IN ANY OF THE FOUR TERMINAL BOX SIDES SUBJECT TO POSITION OF AVR, TERMINALS, ETC.

UNLESS SPECIFIED ALL DIMENSIONS ARE IN MILLIMETERS					CUMMINS GENERATOR TECHNOLOGIES	
DO NOT SCALE PRINT	DRAWN	SMC			DRAWING, GENERAL ASSEMBLY HC4 CDE 2-BRG STD GA	
	CHECKED	SMC				
	APPROVED	CR				
CONFIDENTIAL PROPERTY OF CUMMINS GENERATOR TECHNOLOGIES	DATE	04JUL00		SITE CODE	STA	
	SCALE	FIRST USED ON				
	1:10	---		DWG SIZE	41-4495	SHEET
				A4		1
						REV
						G