

REL NO	REV	DETAILS	DWN	CDK	APVD	DATE
ECO-139092	D	ADDED PG7S TO TITLE AND WEIGHT/C OF G TABLE	DW	SMH	SFA	04NOV13

D

D

C

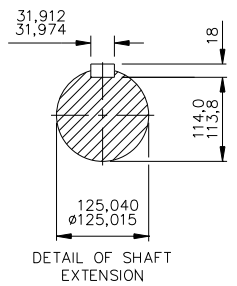
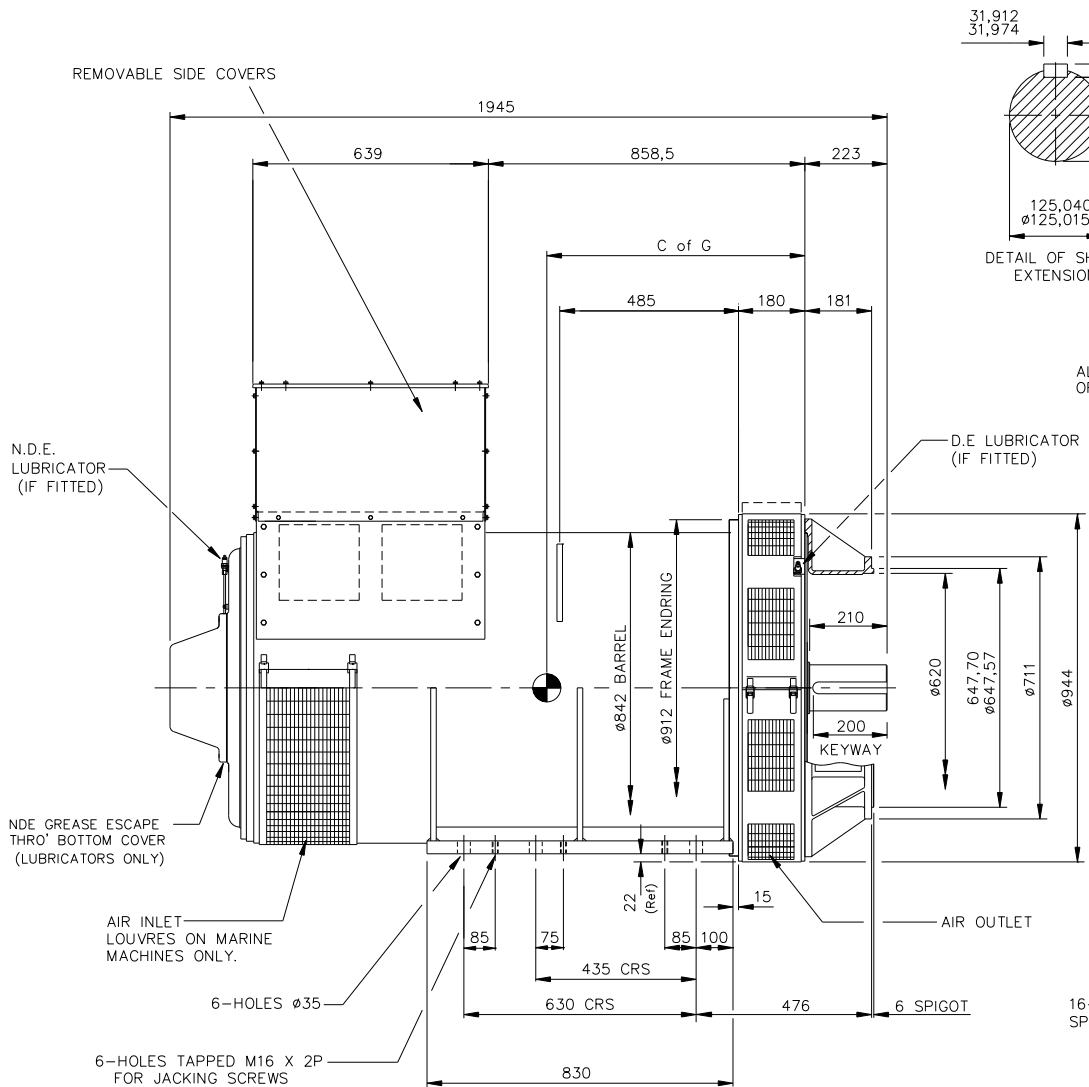
C

B

B

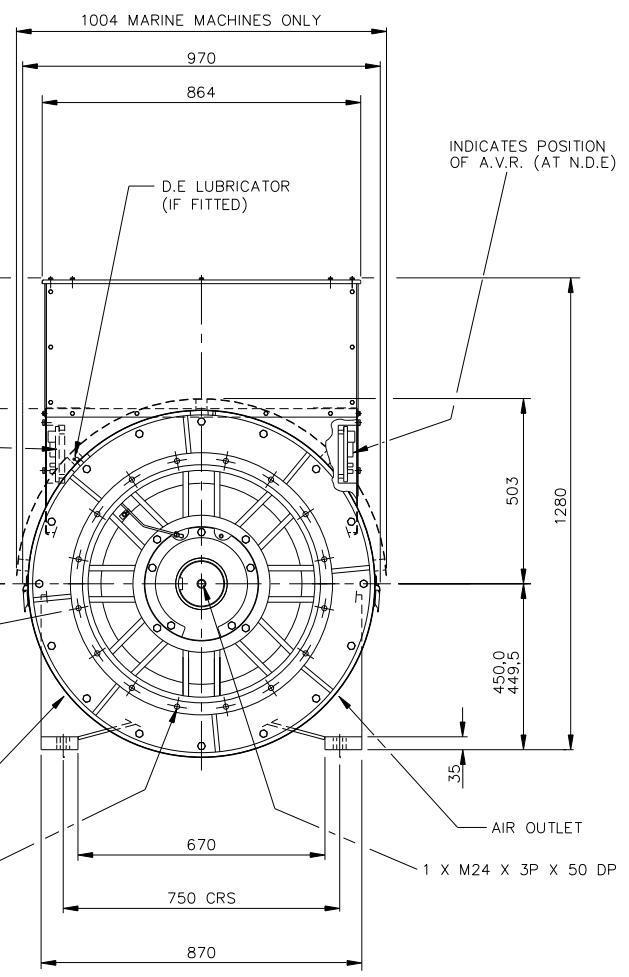
A

A



ALTERNATE POSITION OF A.V.R. (AT D.E)

16-HOLES Ø14 EQUI-SPACED ON 679,5 PCD



CUSTOMER MUST ENSURE THAT AIR INLET & OUTLET POSITIONS ARE NOT OBSTRUCTED

NOTE: - CUSTOMER MAY CUT CABLE ENTRY HOLES AS REQUIRED IN ANY OF THE FOUR TERMINAL BOX SIDES SUBJECT TO POSITION OF AVR, TERMINALS, ETC.

CORE	C of G	WEIGHT kg
D (4p)	710	3267
E (4p)	730	3506
D (6p)	710	3182
S (4p)	700	3670

UNLESS SPECIFIED ALL DIMENSIONS ARE IN MILLIMETERS	
DO NOT SCALE PRINT	DRAWN AV
	CHECKED SMH
	APPROVED SFA
CONFIDENTIAL	DATE 15MAR05
PROPERTY OF CUMMINS	SCALE FIRST USED ON
GENERATOR TECHNOLOGIES	1:10 ---

	CUMMINS GENERATOR TECHNOLOGIES	
	DRAWING, GENERAL ASSEMBLY P7D/E (4p) P7D (6p) PG7S (4p) 2-BRG ALTERNATOR WITH S.A.E No 0 ADAPTOR STANDARD TERMINAL BOX - STANDARD FEET	
SITE CODE STA	DWG SIZE A2	70-1043
SHEET 1	REV C	