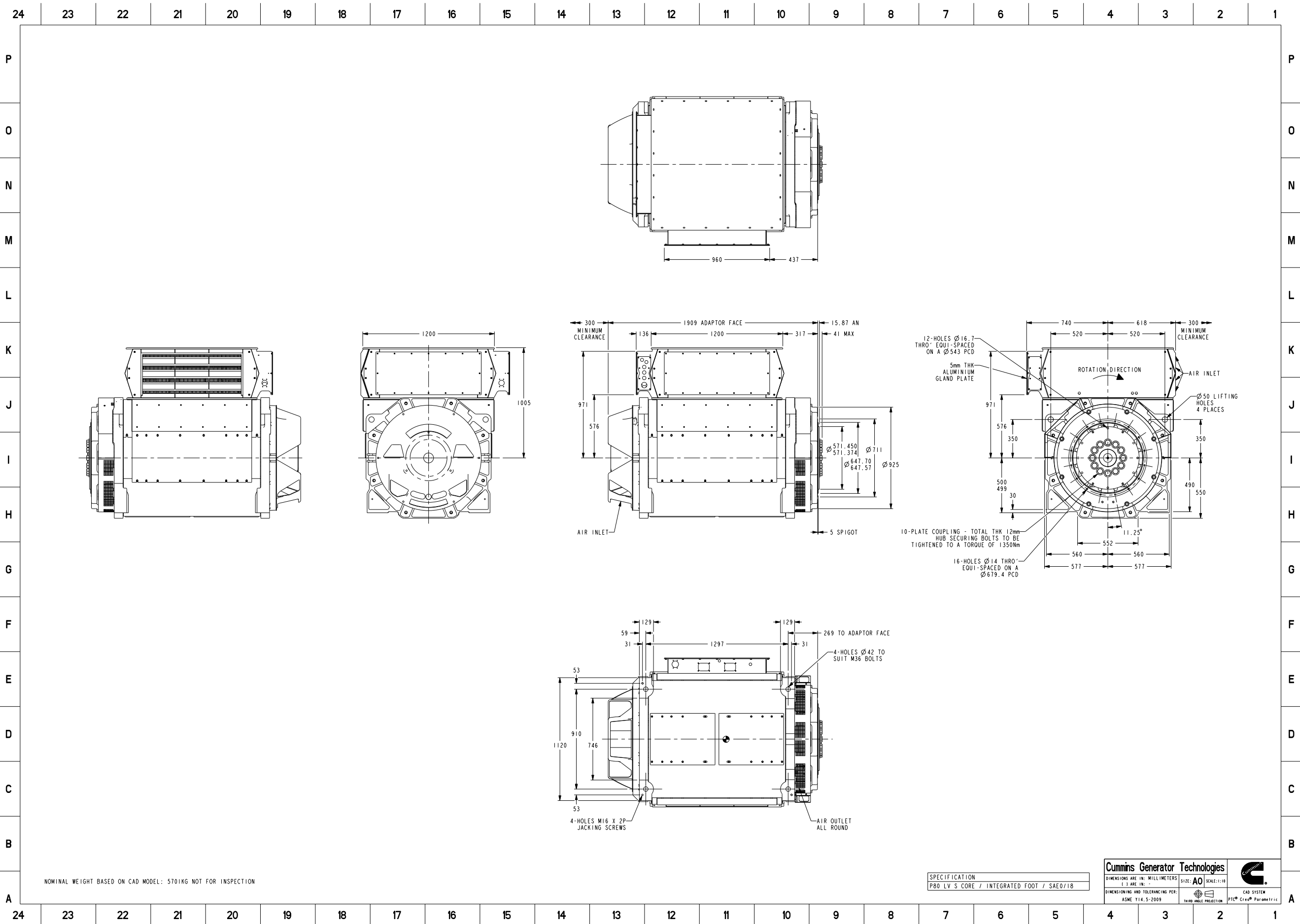


NOMINAL WEIGHT BASED ON CAD MODEL: 5701KG NOT FOR INSPECTION

SPECIFICATION
P80 LV S CORE / INTEGRATED FOOT / SAE0/18

Cummins Generator Technologies			
DIMENSIONS ARE IN: MILLIMETERS () ARE IN: -	SIZE: A2	SCALE: 1:10	
DIMENSIONING AND TOLERANCING PER: ASME Y14.5-2009		THIRD ANGLE PROJECTION	CAD SYSTEM PTC® Creo® Parametric

Document Generated: 19NOV2020 10:26 GMT



Document Generated: 19NOV2020 10:26 GMT

SPECIFICATION		Cummins Generator Technologies		
P80 LV S CORE / INTEGRATED FOOT / SAE018		DIMENSIONS ARE IN: MILLIMETERS 1 3 ARE IN: -		
DIMENSIONING AND TOLERANCING PER: ASME Y14.5-2009		SIZE: A0	SCALE: 1:10	CAD SYSTEM PTC® Creo® Parametric



Part Number: 80-2474

Change Notice	CN00026368	Alternates	
Manufacturer Part (MEP)	No	Usage	Production Only
Release Phase Code	Production (P)	Drawing Specification	DS80-2474
External Regulations	No External Regulation		

3D image provided when available for visual reference only.

Associated Specifications

Number	Name	Type	Category	Sub-Category
ESA030B356	SPECIFICATION,MATERIAL	Engineering Specification	Material Specification	Prohibited and Restricted Prohibited and Restricted

Drawing Revision Information

Description of Change(s)
DIMENSIONING ADDED/CORRECTED

Drawing Authorization

Drafter	Andrew Savill	Date	18NOV2020
Checker	Darren George Robert Lee	Date	19NOV2020
Approver	NO APPROVAL REQUIRED	Date	

Document Generated: 19NOV2020 10:26 GMT