

AutoCad

4

3

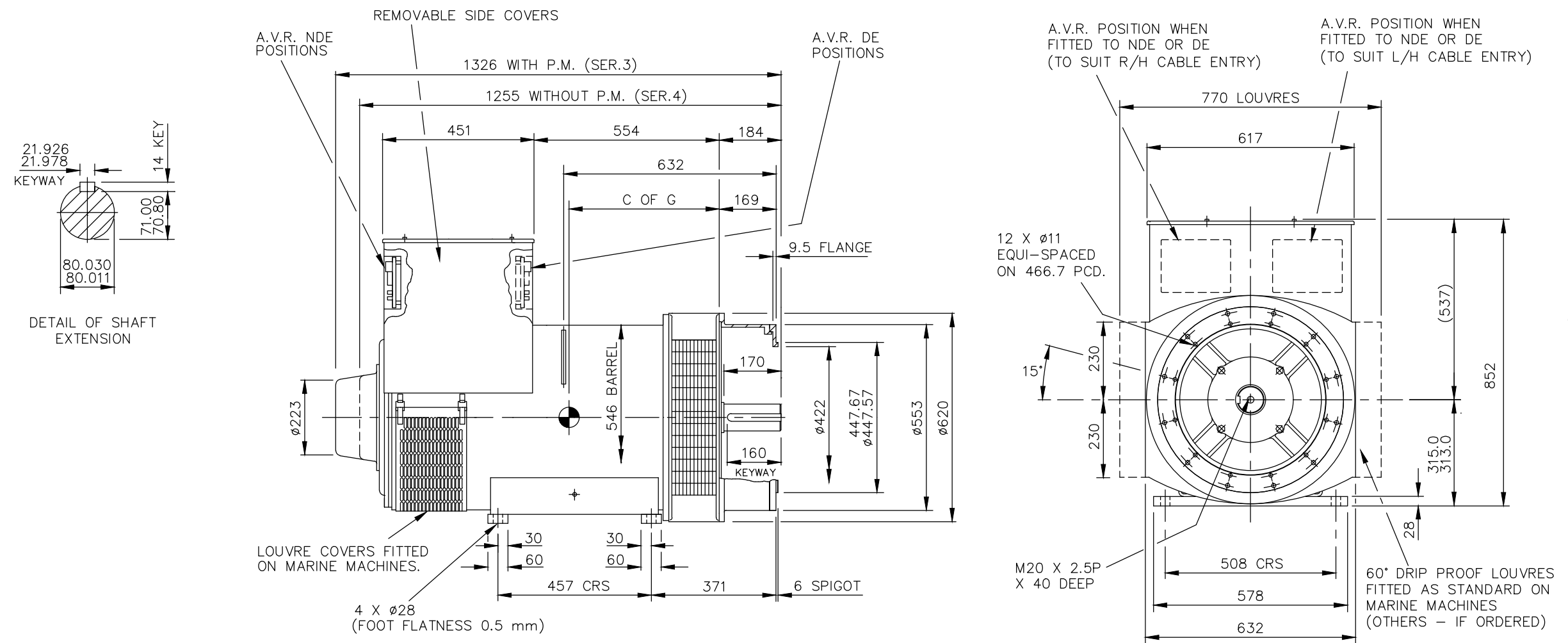
2

1

CORE	C OF G (mm)	WEIGHT (KG)
C	433	885
D	453	950
E	474	1030

REL NO	REV	NO	REVISION	DWN	CKD	APVD	DATE
ECO-172258	B	1	ZONE D4,ADDED WEIGHT (885 KG) FOR C CORE	NK	PN	S_NARAYANAN	21SEP17
		2	ZONE D4,ADDED WEIGHT (950 KG) FOR D CORE	NK	PN	S_NARAYANAN	21SEP17
		3	ZONE D4,ADDED WEIGHT (1030 KG) FOR E CORE	NK	PN	S_NARAYANAN	21SEP17
		4	IN TITLE BLOCK,DESCRIPTION S4L1S CDE 2-BRG, SAE 2, ϕ 80 X 170L, STD T/BOX WAS S4 CDE 2-BRG	NK	PN	S_NARAYANAN	21SEP17

NOTE: -
 1. CUSTOMER MAY CUT CABLE ENTRY HOLES AS REQUIRED IN ANY OF THE FOUR TERMINAL BOX SIDES SUBJECT TO POSITION OF A.V.R, TERMINALS, ETC.



UNLESS OTHERWISE SPECIFIED, ALL DIMENSIONS ARE IN MILLIMETERS	SIM TO 41-4507	DRAWN P_PACHPUTE		CUMMINS GENERATOR TECHNOLOGIES	
	DO NOT SCALE PRINT	CHECKED A_BIRARI		DRAWING, GENERAL ASSEMBLY	
SCALE 1:10		APPROVED B_SURVE	SITE CODE	S4L1S CDE 2-BRG, SAE 2, ϕ 80 X 170L, STD T/BOX	
THIS DOCUMENT (AND THE INFORMATION SHOWN THEREON) IS CONFIDENTIAL AND PROPRIETARY AND SHALL NOT BE DISCLOSED TO OTHERS IN HARD COPY OR ELECTRONIC FORM, REPRODUCED BY ANY MEANS, OR USED FOR ANY PURPOSE WITHOUT WRITTEN CONSENT OF CUMMINS INC.	DATE 14NOV16	FOR INTERPRETATION OF DIMENSIONING AND TOLERANCING, SEE ASME Y14.5-2009	FIRST USED ON S4	STA	DWG SIZE A4
					A056N452
					CAD SHEET 1 OF 1

4

3

2

1

A

A