

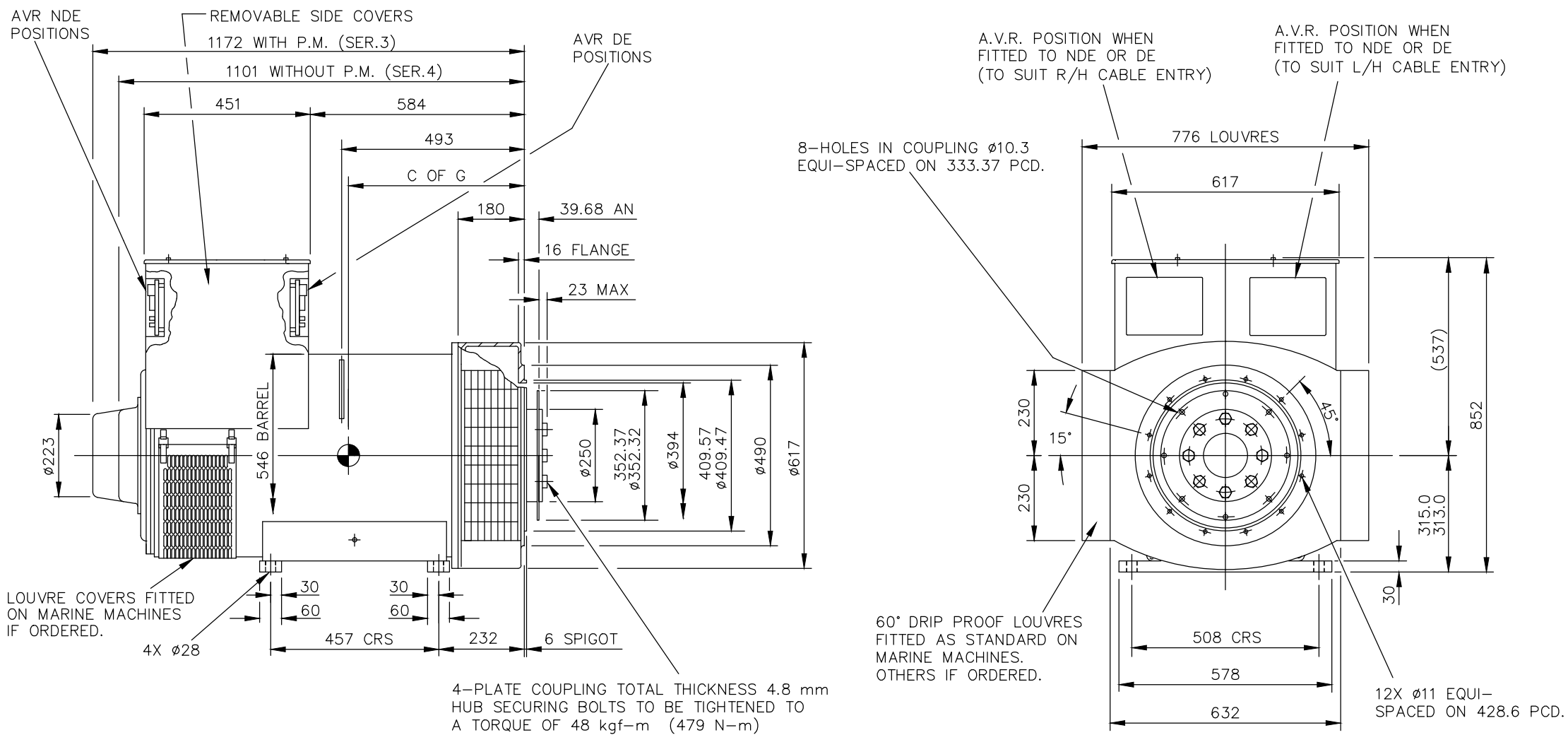
AutoCad

CORE	C OF G (MM)	WEIGHT (KG)
C	463	850
D	483	940
E	504	1024

REL NO	REV	NO	REVISION	DWN	CKD	APVD	DATE
ECO-172223	B	1	ZONE D4, ADDED WEIGHT (850 KG) FOR C CORE	SA	PN	S_NARAYANAN	15SEP17
		2	ZONE D4, ADDED WEIGHT (940 KG) FOR D CORE	SA	PN	S_NARAYANAN	15SEP17
		3	ZONE D4, ADDED WEIGHT (1024 KG) FOR E CORE	SA	PN	S_NARAYANAN	15SEP17
		4	IN TITLE BLOCK, DESCRIPTION S4L1S CDE 1-BRG SAE 3/11.5, STD T/BOX WAS S4 CDE 1-BRG GA STD T/BOX	SA	PN	S_NARAYANAN	15SEP17

NOTE: -

- CUSTOMER MAY CUT CABLE ENTRY HOLES AS REQUIRED IN ANY OF THE FOUR TERMINAL BOX SIDES SUBJECT TO POSITION OF A.V.R, TERMINALS ETC.



UNLESS OTHERWISE SPECIFIED, ALL DIMENSIONS ARE IN MILLIMETERS	SIM TO 41-4525	DRAWN S_BALAMURUGAN		CUMMINS GENERATOR TECHNOLOGIES		
	DO NOT SCALE PRINT	CHECKED A_BIRARI		DRAWING, GENERAL ASSEMBLY		
SCALE 1:10		APPROVED B_SURVE	SITE CODE	S4L1S CDE 1-BRG SAE 3/11.5, STD T/BOX		
THIS DOCUMENT (AND THE INFORMATION SHOWN THEREON) IS CONFIDENTIAL AND PROPRIETARY AND SHALL NOT BE DISCLOSED TO OTHERS IN HARD COPY OR ELECTRONIC FORM, REPRODUCED BY ANY MEANS, OR USED FOR ANY PURPOSE WITHOUT WRITTEN CONSENT OF CUMMINS INC.	FOR INTERPRETATION OF DIMENSIONING AND TOLERANCING, SEE ASME Y14.5-2009	DATE 27JAN17		STA	DWG SIZE A4	A057B566
		FIRST USED ON S4				