

AutoCad

4

3

2

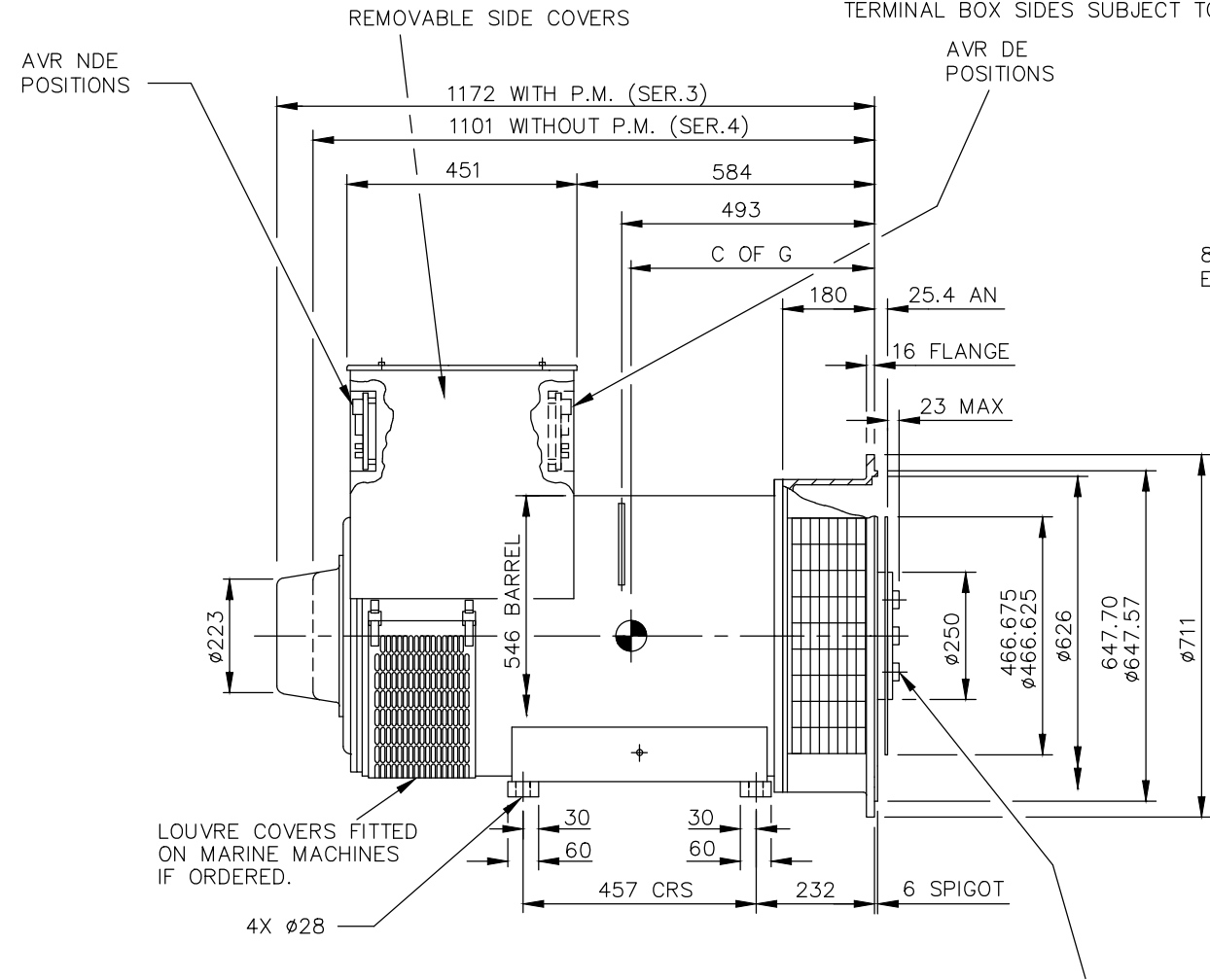
1

CORE	C OF G (MM)	WEIGHT (KG)
C	463	850
D	483	940
E	504	1024

REL NO	REV	NO	REVISION	DWN	CKD	APVD	DATE
ECO-172223	B	1	ZONE D4, ADDED WEIGHT (850 KG FOR C CORE)	NK	PN	S_NARAYANAN	08SEP17
		2	ZONE D4, ADDED WEIGHT (940 KG FOR D CORE)	NK	PN	S_NARAYANAN	08SEP17
		3	ZONE D4, ADDED WEIGHT (1024 KG FOR E CORE)	NK	PN	S_NARAYANAN	08SEP17
		4	IN TITLE BLOCK, DESCRIPTION S4L1S WAS S4	NK	PN	S_NARAYANAN	08SEP17

NOTE: -

- CUSTOMER MAY CUT CABLE ENTRY HOLES AS REQUIRED IN ANY OF THE FOUR TERMINAL BOX SIDES SUBJECT TO POSITION OF AVR, TERMINALS, ETC.

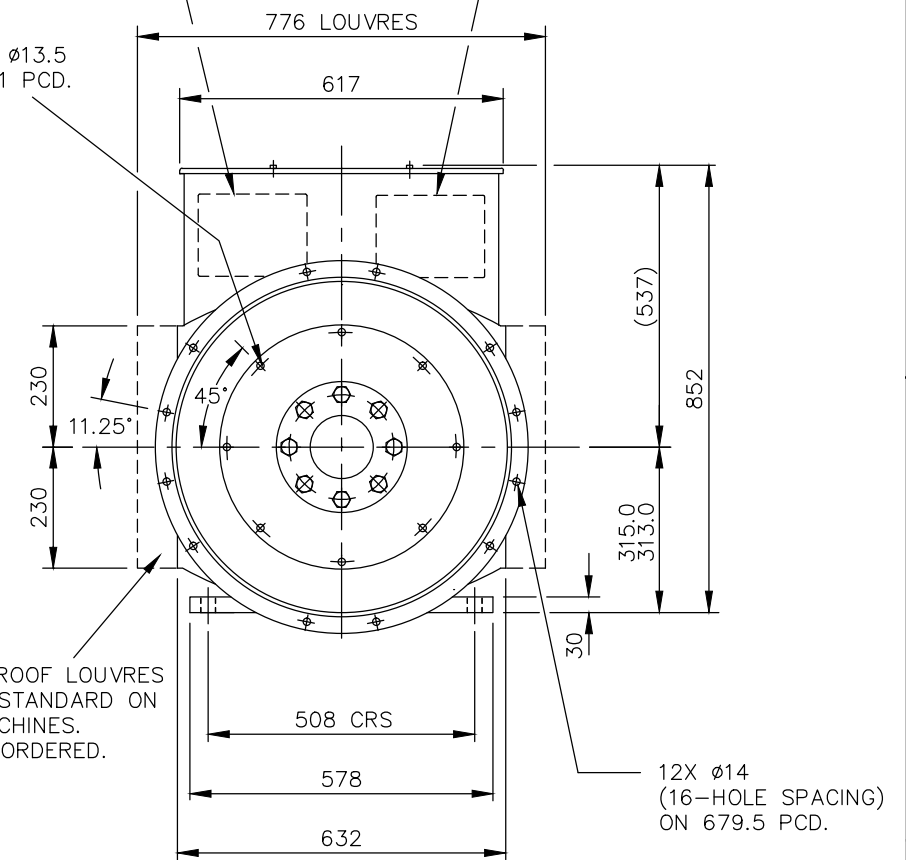


8-HOLES IN COUPLING Ø13.5 EQUI-SPACED ON 438.1 PCD.

AVR POSITION WHEN FITTED TO NDE OR DE (TO SUIT R/H CABLE ENTRY)

AVR POSITION WHEN FITTED TO NDE OR DE (TO SUIT L/H CABLE ENTRY)

60° DRIP PROOF LOUVRES FITTED AS STANDARD ON MARINE MACHINES. OTHERS IF ORDERED.



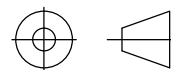
4-PLATE COUPLING TOTAL THICKNESS 4.8 mm HUB SECURING BOLTS TO BE TIGHTENED TO A TORQUE OF 48 kgf-m (479 N-m)

UNLESS OTHERWISE SPECIFIED, ALL DIMENSIONS ARE IN MILLIMETERS

SIM TO 41-4536

DO NOT SCALE PRINT

SCALE 1:10



THIS DOCUMENT (AND THE INFORMATION SHOWN THEREON) IS CONFIDENTIAL AND PROPRIETARY AND SHALL NOT BE DISCLOSED TO OTHERS IN HARD COPY OR ELECTRONIC FORM, REPRODUCED BY ANY MEANS, OR USED FOR ANY PURPOSE WITHOUT WRITTEN CONSENT OF CUMMINS INC.

DRAWN S_BALAMURUGAN

CHECKED A_BIRARI

APPROVED B_SURVE

DATE 03FEB17

FOR INTERPRETATION OF DIMENSIONING AND TOLERANCING, SEE ASME Y14.5-2009

FIRST USED ON S4



SITE CODE

STA

CUMMINS GENERATOR TECHNOLOGIES

DRAWING, GENERAL ASSEMBLY S4L1S CDE 1-BRG SAE 0/14 STD T/BOX

DWG SIZE A4

A057B657

CAD SHEET 1 OF 1

4

3

2

1

A

A