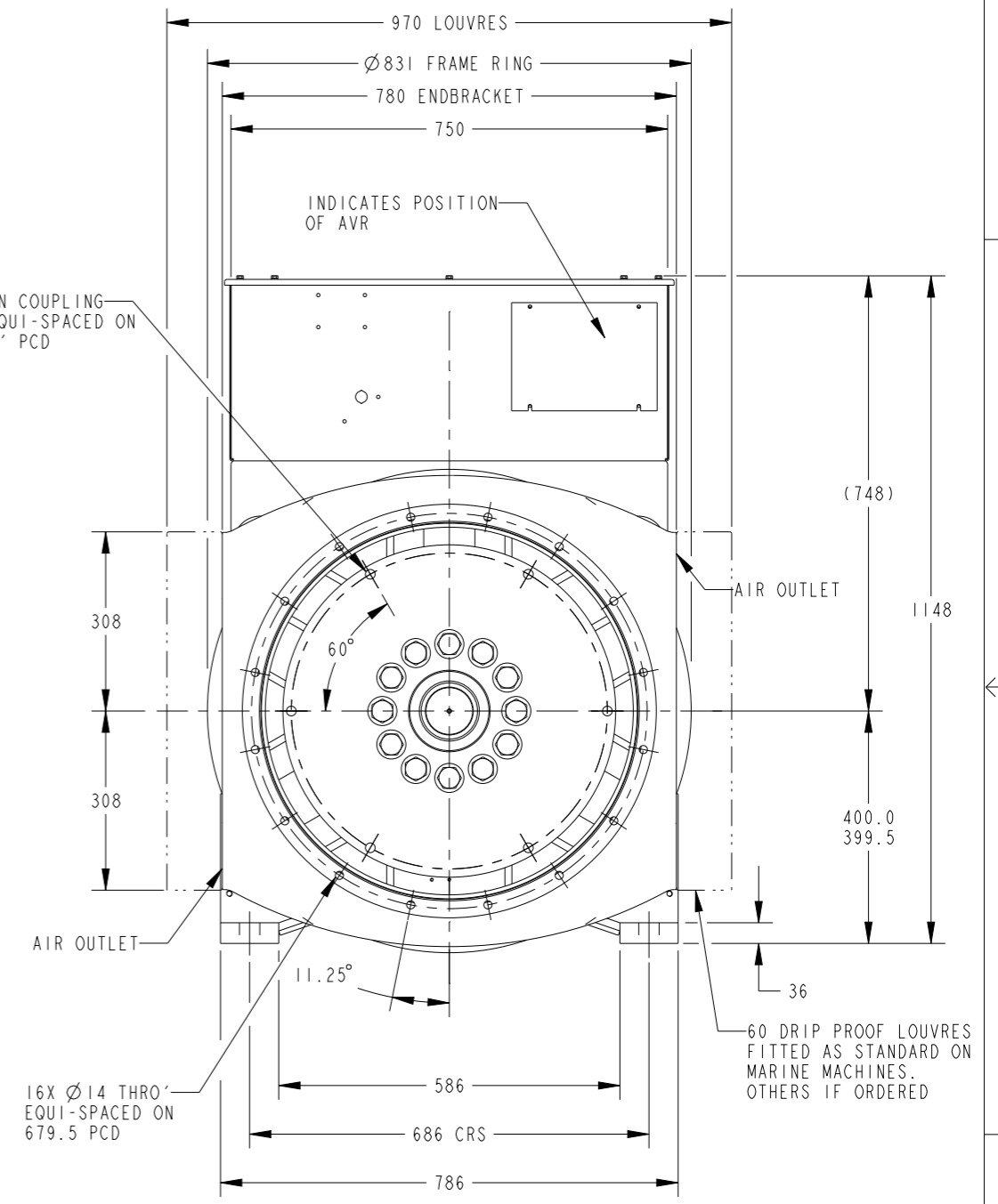
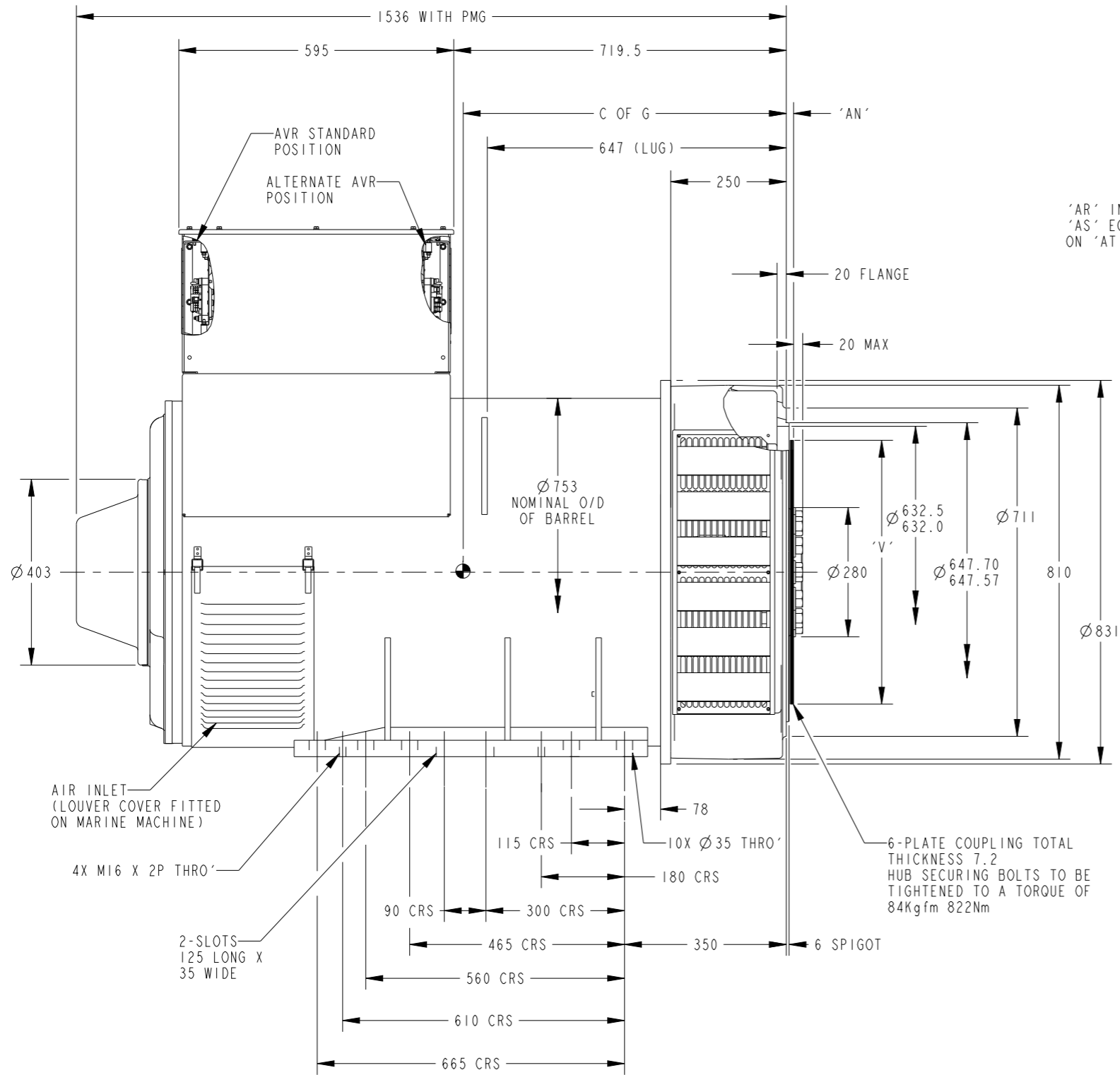


PTC® Creo® Parametric		
CORE	WEIGHT(KG)	C OF G
E	2020	682
F	2326	695

DISC COUPLINGS					
SAE NO.	AN	AR	AS	AT	V
14	25.4	8	∅13.5	438.1	∅466.67
18	15.87	6	∅16.7	543	∅571.45

REL NO	REV	NO	REVISION	DWN	CKD	APVD	DATE
ECO-175830	A	1	RELEASED FOR PRODUCTION	KP	RH	I.SAUNDATTI	26MAR18

NOTE:  
1. CUSTOMER MUST ENSURE THAT AIR INLET AND OUTLET POSITIONS ARE NOT OBSTRUCTED



UNLESS OTHERWISE SPECIFIED, ALL DIMENSIONS ARE IN MILLIMETERS	SIM TO -	DWN K.PATIL		CUMMINS GENERATOR TECHNOLOGIES	
	DO NOT SCALE PRINT	CKD R.HANABAR		DRAWING, GENERAL ASSEMBLY	
SCALE 0.130		APVD I.SAUNDATTI	SITE CODE	S6LIM-E/F, IB SAE0-14/18, STD BOX (MARINE)	
THIS DOCUMENT (AND THE INFORMATION SHOWN THEREON) IS CONFIDENTIAL AND PROPRIETARY AND SHALL NOT BE DISCLOSED TO OTHERS IN HARD COPY OR ELECTRONIC FORM, REPRODUCED BY ANY MEANS, OR USED FOR ANY PURPOSE WITHOUT WRITTEN CONSENT OF CUMMINS INC.	DATE 26MAR18	FIRST USED ON S6	STA	DWG SIZE A2	CAD SHEET 1 of 1
	FOR INTERPRETATION OF DIMENSIONING AND TOLERANCING, SEE ASME Y14.5-2009			A059X854	