

REL NO	REV	DETAILS	DWN	CDK	APVD	DATE
ECO-139092	C	ADDED PG7S TO TITLE AND WEIGHT/C OF G TABLE	DW	SMH	SFA	04NOV13

D

D

C

C

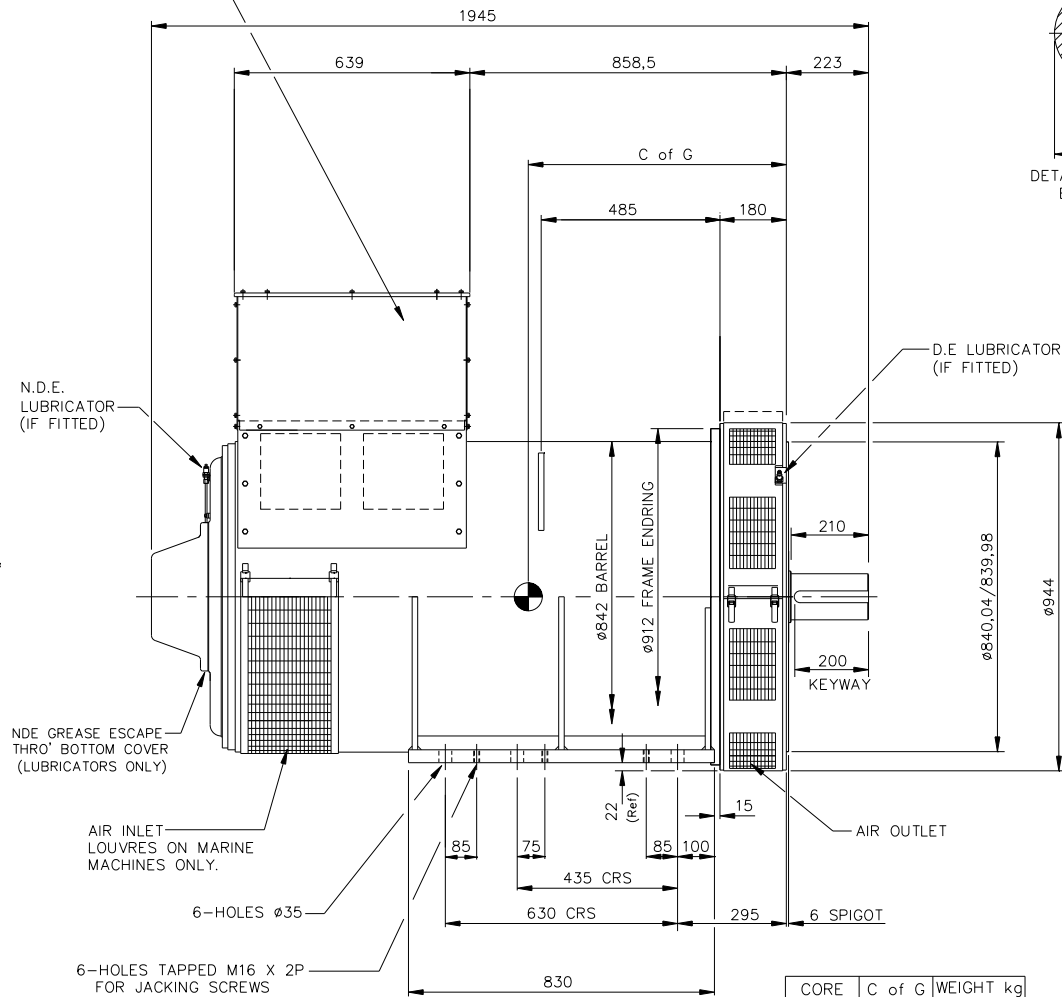
B

B

A

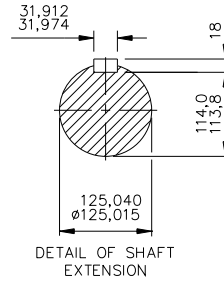
A

REMOVABLE SIDE COVERS



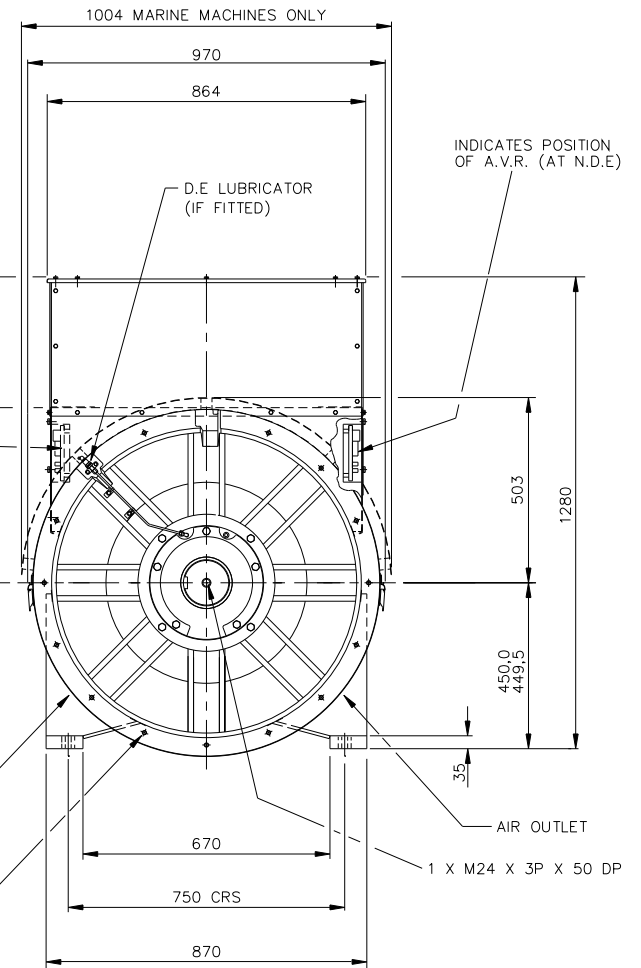
CORE	C of G	WEIGHT kg
D (4p)	710	3267
E (4p)	730	3506
D (6p)	710	3182
S (4p)	700	3670

NOTE:- CUSTOMER MAY CUT CABLE ENTRY HOLES AS REQUIRED IN ANY OF THE FOUR TERMINAL BOX SIDES SUBJECT TO POSITION OF AVR, TERMINALS, ETC.



ALTERNATE POSITION OF A.V.R. (AT D.E)

16 HOLES M12 X 1,75P X 25 DEEP EQUI-SPACED ON 880 P.C.D



CUSTOMER MUST ENSURE THAT AIR INLET & OUTLET POSITIONS ARE NOT OBSTRUCTED

UNLESS SPECIFIED ALL DIMENSIONS ARE IN MILLIMETERS			<b>CUMMINS GENERATOR TECHNOLOGIES</b>	
<b>DO NOT SCALE PRINT</b>	DRAWN DFC		DRAWING, GENERAL ASSEMBLY P7D/E (4p) P7D (6p) PG7S (4p)	
	CHECKED SMH		2-BRG ALTERNATOR	
	APPROVED SFA		STANDARD TERMINAL BOX - STANDARD FEET	
<b>CONFIDENTIAL</b>	DATE 14MAR05	SITE CODE	DWG SIZE	
PROPERTY OF CUMMINS GENERATOR TECHNOLOGIES	SCALE 1:10	FIRST USED ON ---	A2	70-1007
			SHEET 1	REV C