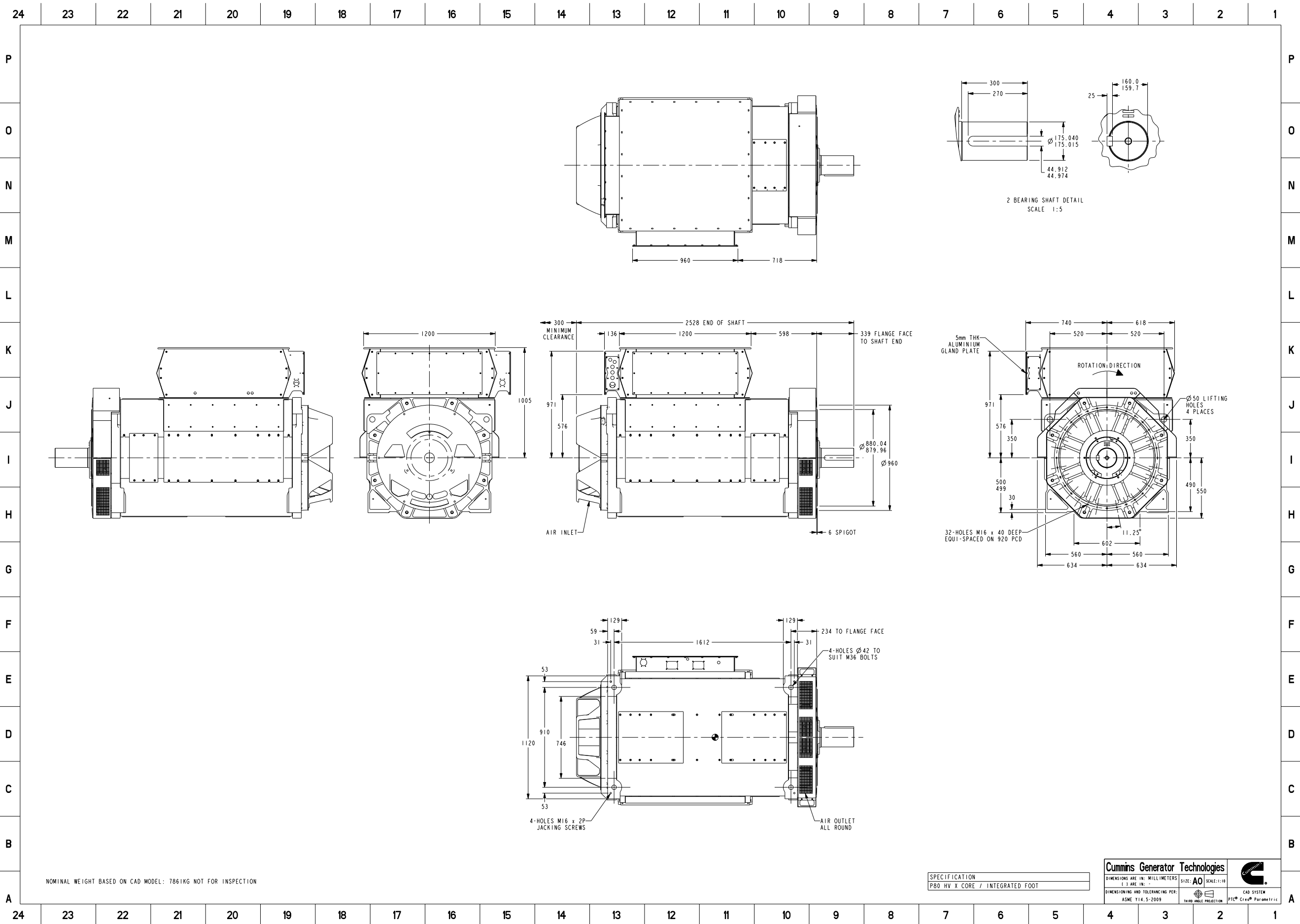


Document Generated: 22OCT2020 10:25 GMT

Cummins Data Classification:
Cummins Confidential

This document (and the information shown thereon) is Confidential and Proprietary and shall not be disclosed to others in hard copy or electronic form, reproduced by any means, or used for any purpose without written consent of Cummins Inc.

Part Number: **A042S364** Part Revision: **C**
 Part Name: **ARRANGEMENT, GENERATOR GENERAL**
 Drawing Category: **Outline (Tabulation)** State: **Released** Sheet 1 of 3



Cummins Data Classification:
Cummins Confidential

This document (and the information shown thereon) is **Confidential and Proprietary** and shall not be disclosed to others in hard copy or electronic form, reproduced by any means, or used for any purpose without written consent of Cummins Inc.

Part Number: **A042S364** Part Revision: **C**
 Part Name: **ARRANGEMENT, GENERATOR GENERAL**
 Drawing Category: **Outline (Tabulation)** State: **Released** Sheet 2 of 3

Document Generated: 22OCT2020 10:25 GMT



Part Number: A042S364

Change Notice	CN00025242	Alternates	
Manufacturer Part (MEP)	No	Usage	Production Only
Release Phase Code	Production (P)	Drawing Specification	DSA042S364
External Regulations	No External Regulation		

3D image provided when available for visual reference only.

Associated Specifications

Number	Name	Type	Category	Sub-Category
ESA030B356	SPECIFICATION,MATERIAL	Engineering Specification	Material Specification	Prohibited and Restricted Prohibited and Restricted

Drawing Revision Information

Description of Change(s)
END BRACKETS, WEIGHT, C OF G AND DRAWING BORDER UPDATED.

Drawing Authorization

Drafter	Andrew Savill	Date	22OCT2020
Checker	Tony Charles Clarke	Date	22OCT2020
Approver	NO APPROVAL REQUIRED	Date	

Document Generated: 22OCT2020 10:25 GMT