

STAMFORD®

S9H1D-E4 Wdg.991 - Technical Data Sheet

Standards

STAMFORD industrial alternators meet the requirements of the relevant parts of the IEC 60034 and the relevant sections of other international standards such as BS5000-3, ISO 8528-3, VDE 0530, NEMA MG1-32, CSA C22.2-100 and AS 60034. Other standards and certifications can be considered on request.

Quality Assurance

Alternators are manufactured using production procedures having a quality assurance level to BS EN ISO 9001.



Excitation and Voltage Regulators

Excitation System					
AVR Type	DM110	DECS100	DECS150		
Voltage Regulation	± 0.25%	± 0.25%	± 0.25%		with 4% Engine Governing
AVR Power	PMG	PMG	PMG		

No Load Excitation Voltage (V)	11.6
No Load Excitation Current (A)	0.94
Full Load Excitation Voltage (V)	37
Full Load Excitation Current (A)	2.99
Exciter Time Constant (seconds)	0.34

STAMFORD®

S9H1D-E4 Wdg.991

Electrical Data				
Insulation System	H			
Stator Winding	Double Layer Lap			
Winding Pitch	2/3			
Winding Leads	6			
Winding Number	991			
Number of Poles	4			
IP Rating	IP23			
RFI Suppression	BS EN 61000-6-2 & BS EN 61000-6-4, VDE 0875G, VDE 0875N. Refer to factory for others			
Waveform Distortion	NO LOAD < 1.5% NON-DISTORTING BALANCED LINEAR LOAD < 5.0%			
Short Circuit Ratio	1/Xd			
Steady State X/R Ratio	25.25			
60 Hz				
Telephone Interference	TIF<50			
Cooling Air Flow	3.33 m³/sec			
Voltage Series Star (V)	12470	13200	13800	-
Voltage Parallel Star (V)	-	-	-	-
Voltage Delta (V)	-	-	-	-
kVA Base Rating (Class H) for Reactance Values (kVA)	2980	3155	3300	-
Saturated Values in Per Unit at Base Ratings and Voltages				
Xd Dir. Axis Synchronous	2.201	2.079	1.990	-
X'd Dir. Axis Transient	0.184	0.173	0.166	-
X''d Dir. Axis Subtransient	0.131	0.124	0.119	-
Xq Quad. Axis Reactance	1.102	1.041	0.996	-
X''q Quad. Axis Subtransient	0.209	0.197	0.189	-
XL Stator Leakage Reactance	0.105	0.099	0.095	-
X2 Negative Sequence Reactance	0.177	0.167	0.160	-
X0 Zero Sequence Reactance	0.033	0.031	0.030	-
Unsaturated Values in Per Unit at Base Ratings and Voltages				
Xd Dir. Axis Synchronous	2.641	2.495	2.388	-
X'd Dir. Axis Transient	0.211	0.199	0.191	-
X''d Dir. Axis Subtransient	0.154	0.145	0.139	-
Xq Quad. Axis Reactance	1.135	1.072	1.026	-
X''q Quad. Axis Subtransient	0.251	0.237	0.227	-
XL Stator Leakage Reactance	0.119	0.112	0.107	-
Xlr Rotor Leakage Reactance	0.211	0.200	0.191	-
X2 Negative Sequence Reactance	0.212	0.201	0.192	-
X0 Zero Sequence Reactance	0.039	0.037	0.035	-

STAMFORD

S9H1D-E4 Wdg.991

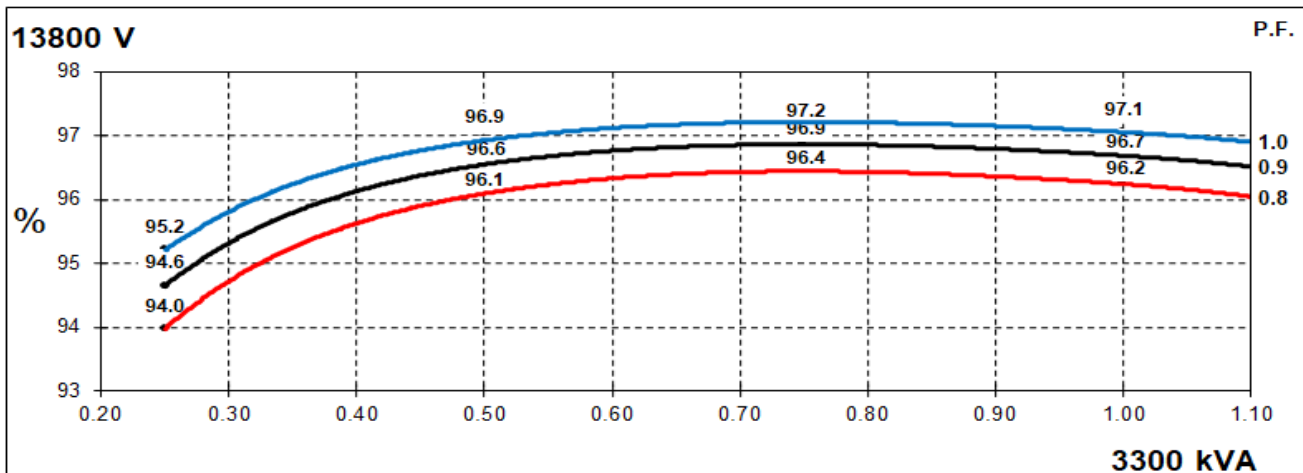
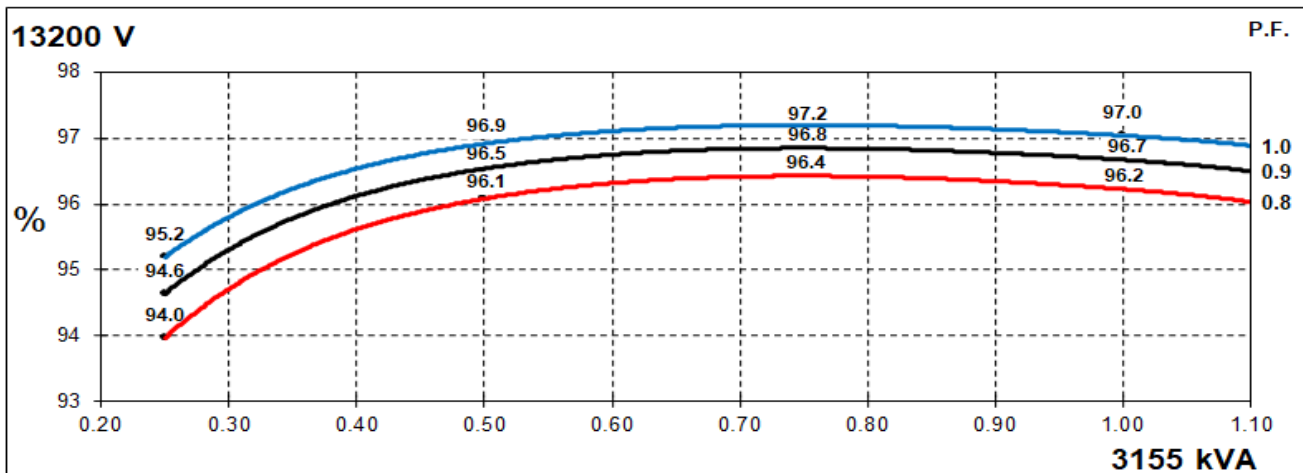
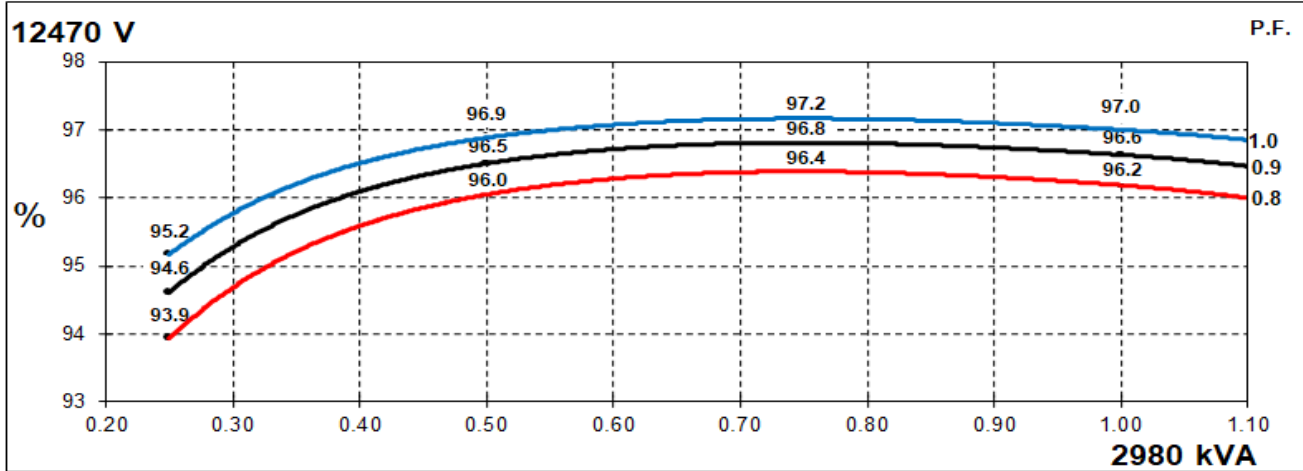
Time Constants (Seconds)		
T'd Transient Time Const.		0.231
T''d Sub-Transient Time Const.		0.019
T'do O.C. Field Time Const.		2.757
Ta Armature Time Const.		0.049
T''q Sub-Transient Time Const.		0.0220
Resistances in Ohms (Ω) at 22°C		
Stator Winding Resistance (Ra), per phase for series connected		0.4980
Rotor Winding Resistance (Rf)		0.63
Exciter Stator Winding Resistance		11.2
Exciter Rotor Winding Resistance per phase		0.016
PMG Phase Resistance (Rpmg) per phase		3.8
Positive Sequence Resistance (R1)		0.6225
Negative Sequence Resistance (R2)		0.7171
Zero Sequence Resistance (R0)		0.6225
Saturation Factors		13800V
SG1.0		0.2
SG1.2		0.82
Mechanical Data		
Shaft and Keys	All alternator rotors are dynamically balanced to better than ISO 21940-11 Grade 2.5 for minimum vibration in operation. Two bearing generators are balanced with a half key.	
	1 Bearing	2 Bearing
SAE Adaptor		0, 00, None
Moment of Inertia	-	96 kgm ²
Weight Wound Stator	-	2198kg
Weight Wound Rotor	-	2297kg
Weight Complete Alternator	-	6150kg
Shipping weight in a Crate	-	6530kg
Packing Crate Size	-	280 x 200 x 220(cm)
Maximum Over Speed	2250 RPM for two minutes	
Bearing Drive End	-	6236
Bearing Non-Drive End	-	6324

STAMFORD®

S9H1D-E4 Wdg.991

THREE PHASE EFFICIENCY CURVES

60Hz

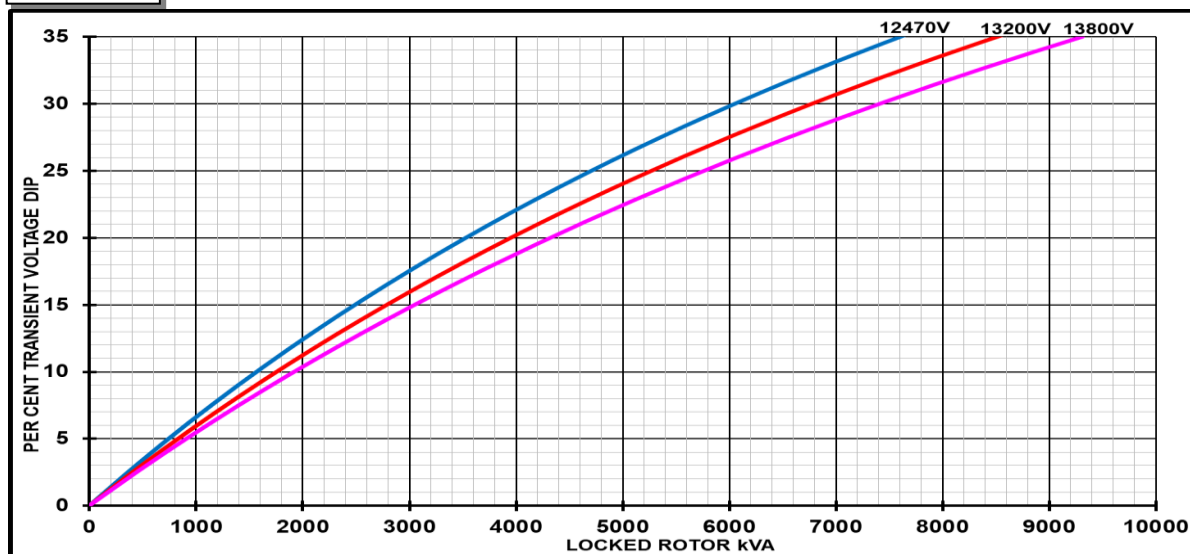


STAMFORD

S9H1D-E4 Wdg.991

Locked Rotor Motor Starting Curves - Separately Excited

60Hz



Transient Voltage Dip Scaling Factor		Transient Voltage Rise Scaling Factor	
Lagging PF	Scaling Factor	Lagging PF	Scaling Factor
<= 0.4	1.00	<= 0.4	1.25
0.5	0.95	0.5	1.20
0.6	0.90	0.6	1.15
0.7	0.86	0.7	1.10
0.8	0.83	> 0.7	1.00
0.9	0.75		
0.95	0.70		
1	0.65		

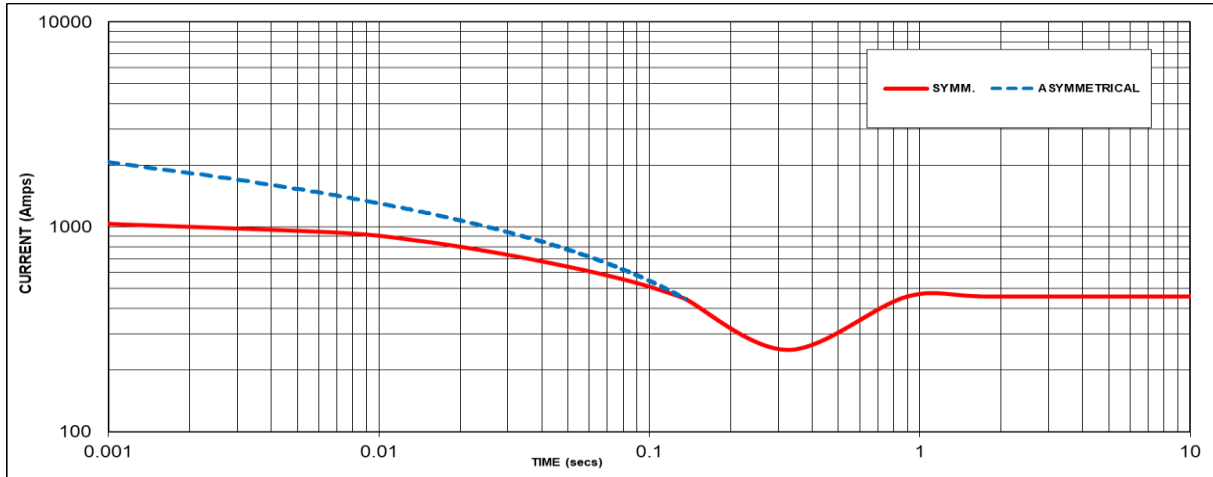
Note: To determine % Transient Voltage Dip or Voltage Rise at various PF, multiply the % Voltage Dip from the curve directly by the Scaling Factor.

STAMFORD[®]

S9H1D-E4 Wdg.991

Three-phase Short Circuit Decrement Curve - Separately Excited

60Hz



Sustained Short Circuit = 458 Amps

Note 1

The following multiplication factors should be used to adjust the values from curve between time 0.001 seconds and the minimum current point in respect of nominal operating voltage :

50Hz		60Hz	
Voltage	Factor	Voltage	Factor
-	-	12470V	X 1.00
-	-	13200V	X 1.06
-	-	13800V	X 1.11
-	-	-	-

The sustained current value is constant irrespective of voltage level

Note 2

The following multiplication factor should be used to convert the values calculated in accordance with NOTE 1 to those applicable to the various types of short circuit :

	3-phase	2-phase L-L	1-phase L-N
Instantaneous	x 1.00	x 0.87	x 1.30
Minimum	x 1.00	x 1.80	x 3.20
Sustained	x 1.00	x 1.50	x 2.50
Max. sustained duration	10 sec.	5 sec.	2 sec.

Note 3

All other times are unchanged

Curves are drawn for Star connections under no-load excitation at rated speeds. For other connection (where applicable) the following multipliers should be applied to current values as shown :

Parallel Star = Curve current value X 2

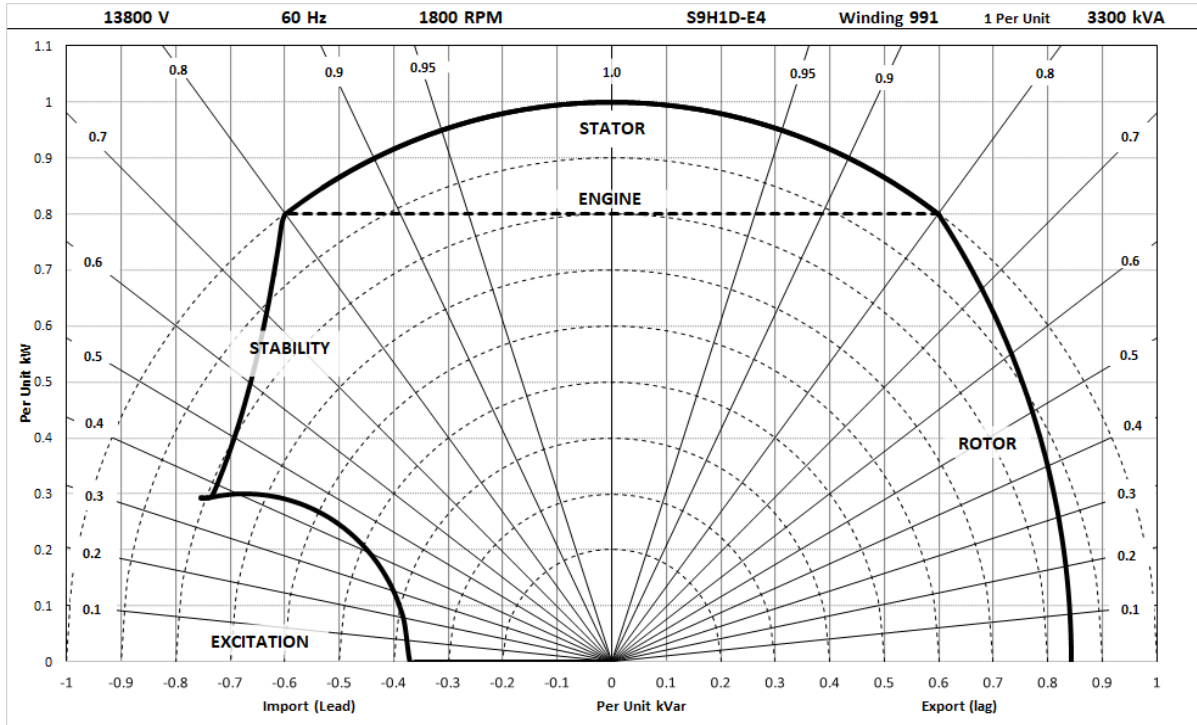
Series Delta = Curve current value X 1.732

STAMFORD

S9H1D-E4 Wdg.991

Typical Alternator Operating Charts

13800V/60Hz



STAMFORD®

S9H1D-E4 Wdg.991

RATINGS AT 0.8 POWER FACTOR

Class - Temp Rise		Standby - 163/27°C	Standby - 150/40°C	Cont. H - 125/40°C	Cont. F - 105/40°C
50 Hz	Star (V)	N/A	N/A	N/A	N/A
	Parallel Star (V)	N/A	N/A	N/A	N/A
	Delta (V)	N/A	N/A	N/A	N/A
	kVA	N/A	N/A	N/A	N/A
	kW	N/A	N/A	N/A	N/A
	Efficiency (%)	N/A	N/A	N/A	N/A
	kW Input	N/A	N/A	N/A	N/A

60 Hz	Star (V)	12470	13200	13800	N/A	12470	13200	13800	N/A	12470	13200	13800	N/A	12470	13200	13800	N/A	
	Parallel Star (V)	N/A	N/A	N/A	N/A	N/A	N/A	N/A	N/A	N/A	N/A	N/A	N/A	N/A	N/A	N/A	N/A	N/A
	Delta (V)	N/A	N/A	N/A	N/A	N/A	N/A	N/A	N/A	N/A	N/A	N/A	N/A	N/A	N/A	N/A	N/A	N/A
	kVA	3278	3471	3630	N/A	3189	3376	3531	N/A	2980	3155	3300	N/A	2733	2893	3024	N/A	
	kW	2622	2777	2904	N/A	2551	2701	2825	N/A	2384	2524	2640	N/A	2186	2314	2419	N/A	
	Efficiency (%)	96.0	96.0	96.1	N/A	96.1	96.1	96.1	N/A	96.2	96.2	96.2	N/A	96.3	96.3	96.4	N/A	
	kW Input	2731	2891	3023	N/A	2656	2810	2939	N/A	2479	2623	2743	N/A	2271	2402	2511	N/A	

De-rates

All values tabulated above are subject to the following reductions:

- 5% when air inlet filters are fitted
- 3% for every 500 meters by which the operating altitude exceeds 1000 meters above mean sea level
- 3% for every 5°C by which the operational ambient temperature exceeds 40°C @ Class H temperature rise (please refer to applications for ambient temperature de-rates at other temperature rise classes)
- For any other operating conditions impacting the cooling circuit please refer to applications

Note: Requirement for operating in an ambient exceeding 60°C and altitude exceeding 4000 meters (for <690V) or 1500 meters (for >690V) must be referred to applications.

Dimensional and Torsional Drawing

For dimensional and torsional information please refer to the alternator General Arrangement and rotor drawings available on our website (<http://stamford-avk.com/>)

Note: Continuous development of our products means that the information contained in our data sheets can change without notice, and specifications should always be confirmed with Cummins Generator Technologies prior to purchase.



Follow us @stamfordavk



Cummins Generator Technologies



View our videos at youtube.com/stamfordavk

stamford-avk.com

For Applications Support:
applications@cummins.com

For Customer Service:
emea.service@cummins.com

For General Enquiries:
Stamford-avk@cummins.com

Copyright 2020. Cummins Generator Technologies Ltd. All rights reserved.
Cummins and the Cummins logo are registered trade marks of Cummins Inc.
STAMFORD is a registered trade mark of Cummins Generator Technologies Ltd.

