



Mining

Case History

Christmas Creek mine

Where:

Western Australia

Specified:

28 x **STAMFORD®** P80 alternators

Purpose:

Alternators required for 58 MW power plant at a remote iron ore mining site

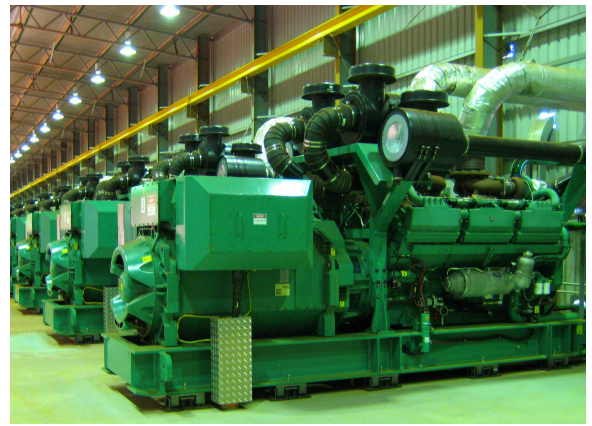
Contract Power shows its trust in **STAMFORD®**

Contract Power Group has its roots in Western Australia, where it has become a pioneer in the power generation equipment sector. Since the 1990s the company has been providing remote on-site servicing and 24-hour call-out to mining sites throughout the state. In the last 20 years it has grown to become an international organisation with customers around the world.

For many years Contract Power has been designing and delivering power plant solutions to its international clients through its 'Build Own Operate' philosophy. In the course of this work, it has come to recognise the benefits of **STAMFORD®** alternators, and has them installed as key components of the power generation equipment at plants in three major Western Australian mining sites.



The installation at Christmas Creek followed successful power projects at the Savannah and Cloudbreak mining sites



28 high voltage **STAMFORD**® P80s were specified for the gensets

The latest of the three Western Australian mining projects is Christmas Creek, owned and operated by the Fortescue Metals Group. Situated in the state's Pilbara region, the iron ore mine has a 58 MW prime power requirement, making it the largest of the three sites, and uses 28 high voltage **STAMFORD**® P80 alternators. These alternators each have a 2,500 kVA output and bar wound technology.

Contract Power had already installed eight **STAMFORD**® P80 units for the 12 MW power plant it built for to the Savannah mine in the East Kimberly region of the state in 2004. Then in 2007, Contract Power supplied 22 **STAMFORD**® P80 alternators to help meet the 44 MW power requirement at the Cloudbreak iron ore mine, just 50 km east of the Christmas Creek site.

Contract Power Group has been an advocate of **STAMFORD**® products for over 23 years. When the P80 became available in the early 2000s with 11 KV 2.5 MW and higher output ratings, they were considered and then utilised these for a project in the Kimberley. These alternators have now been in service since 2004. Based on this experience, they have since purchased and utilised a further 52 units in two power stations in the harsh North West.

STAMFORD® units have been put through their paces and have proven to be reliable over years of operation.

An iron ore mining environment is one of the harshest environments for any machinery to be operating in.

The two earlier sites had seen MTU generator sets equipped with **STAMFORD**® gensets. At the Christmas Creek site, the alternators were paired for the first time with Cummins QSK78 electronically programmable engines and a control system in the site's hot, dry and dusty environment.

The striking feature of the **STAMFORD**® alternators supplied for the sites by **NEWAGE**® | **STAMFORD**® | **AvK**® has been their reliability. At all three of these high-profile installations, **STAMFORD**® units have been put through their paces and have proven to be reliable over years of operation.

For more information on the full range of **NEWAGE**® | **STAMFORD**® | **AvK**® products and services visit: www.stamford-avk.com



There for you™



www.stamford-avk.com

©Copyright 2021, Cummins Generator Technologies Ltd. All Rights Reserved. Cummins and the Cummins logo are registered marks of Cummins Inc. NEWAGE, STAMFORD and AvK are registered trade marks of Cummins Generator Technologies Ltd.

Part No: CS_MIN_CC_P_EN_GS_02