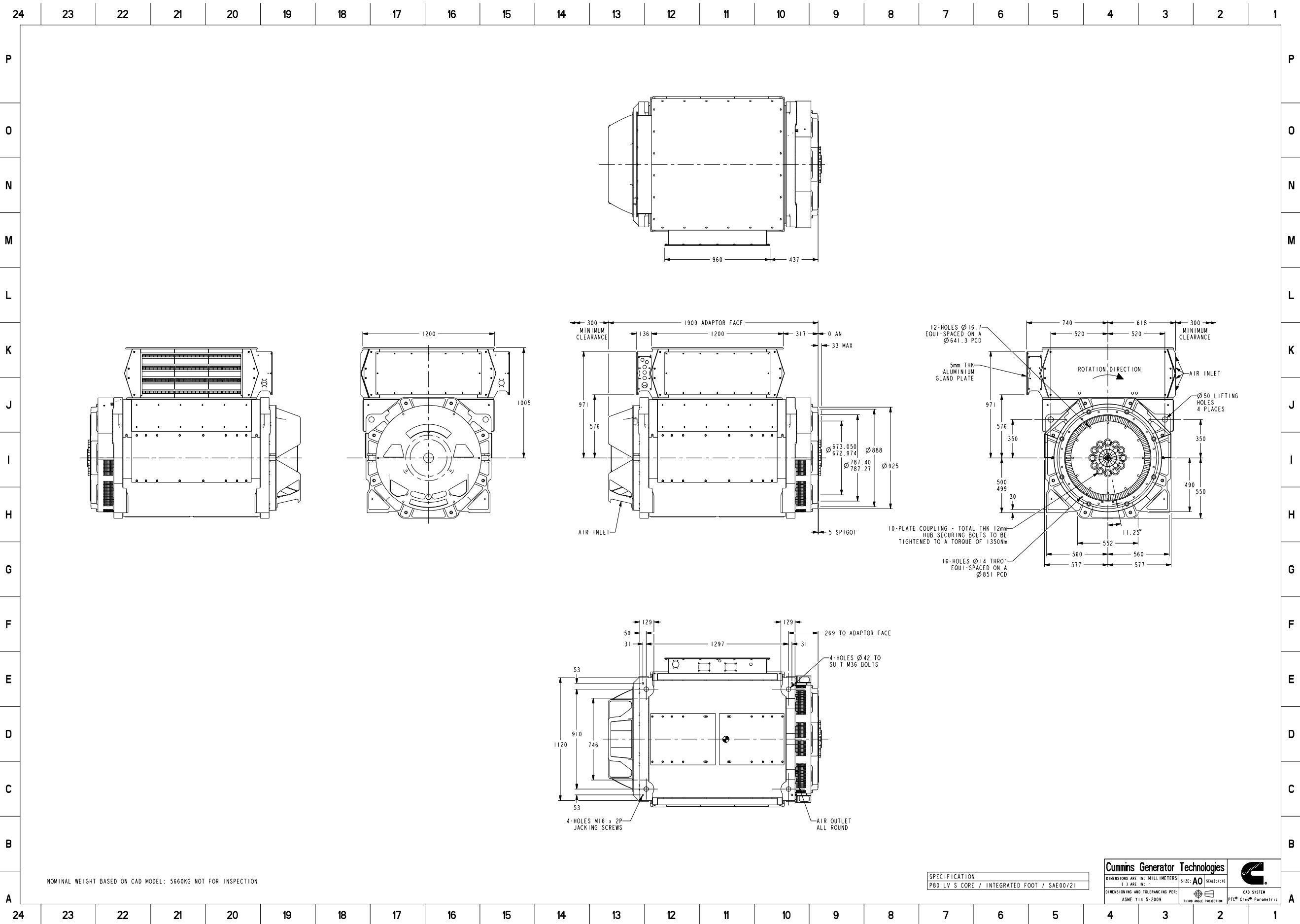


NOMINAL WEIGHT BASED ON CAD MODEL: 5660KG NOT FOR INSPECTION

SPECIFICATION
P80 LV S CORE / INTEGRATED FOOT / SAE00/21

Cummins Generator Technologies			
DIMENSIONS ARE IN: MILLIMETERS () ARE IN: -	SIZE: A2	SCALE: 1:10	
DIMENSIONING AND TOLERANCING PER: ASME Y14.5-2009	THIRD ANGLE PROJECTION		CAD SYSTEM PTC® Creo® Parametric

Document Generated: 04NOV2020 13:16 GMT



Document Generated: 04NOV2020 13:16 GMT

Cummins Data Classification:
Cummins Confidential

This document (and the information shown thereon) is **Confidential and Proprietary** and shall not be disclosed to others in hard copy or electronic form, reproduced by any means, or used for any purpose without written consent of Cummins Inc.

Part Number: **80-2473** Part Revision: **C**
 Part Name: **ARRANGEMENT, GENERATOR GENERAL**
 Drawing Category: **Outline (Tabulation)** State: **Released** Sheet 2 of 3



Part Number: 80-2473

Change Notice	CN00025752	Alternates	
Manufacturer Part (MEP)	No	Usage	Production Only
Release Phase Code	Production (P)	Drawing Specification	DS80-2473
External Regulations	No External Regulation		

3D image provided when available for visual reference only.

Associated Specifications

Number	Name	Type	Category	Sub-Category
ESA030B356	SPECIFICATION,MATERIAL	Engineering Specification	Material Specification	Prohibited and Restricted Prohibited and Restricted

Drawing Revision Information

Description of Change(s)
END BRACKETS, WEIGHT, C OF G AND DRAWING BORDER UPDATED

Drawing Authorization

Drafter	Andrew Savill	Date	04NOV2020
Checker	Darren George Robert Lee	Date	04NOV2020
Approver	NO APPROVAL REQUIRED	Date	

Document Generated: 04NOV2020 13:16 GMT