

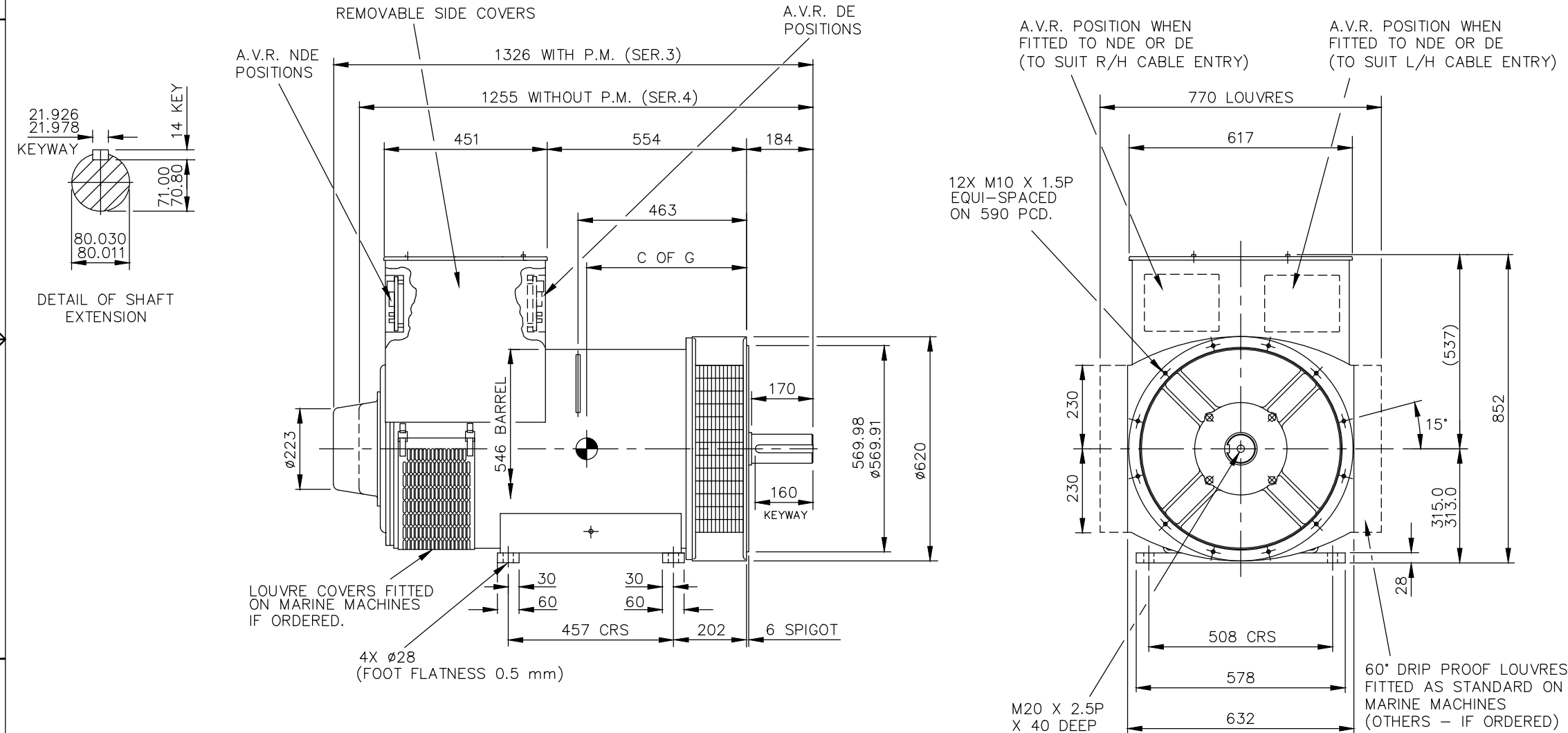
AutoCad

CORE	C OF G (mm)	WEIGHT (KG)
C	433	885
D	453	950
E	474	1030

REL NO	REV	NO	REVISION	DWN	CKD	APVD	DATE
ECO-172296	B	1	ZONE D4, ADDED WEIGHT (885 KG) FOR C CORE	PK	PN	S_NARAYANAN	13SEP17
		2	ZONE D4, ADDED WEIGHT (950 KG) FOR D CORE	PK	PN	S_NARAYANAN	13SEP17
		3	ZONE D4, ADDED WEIGHT (1030 KG) FOR E CORE	PK	PN	S_NARAYANAN	13SEP17
		4	IN TITLE BLOCK, DESCRIPTION S4LS CDE 2-BRG, SAE NONE, Ø80 X 170L, STD T/BOX WAS S4 CDE 2-BRG STD GA	PK	PN	S_NARAYANAN	13SEP17

NOTE: -

- CUSTOMER MAY CUT CABLE ENTRY HOLES AS REQUIRED IN ANY OF THE FOUR TERMINAL BOX SIDES SUBJECT TO POSITION OF A.V.R, TERMINALS, ETC.



UNLESS OTHERWISE SPECIFIED, ALL DIMENSIONS ARE IN MILLIMETERS	SIM TO 41-4495	DRAWN P_PACHPUTE		CUMMINS GENERATOR TECHNOLOGIES			
	DO NOT SCALE PRINT	CHECKED A_BIRARI		DRAWING, GENERAL ASSEMBLY			
	SCALE 1:10	APPROVED B_SURVE		SITE CODE	S4LS CDE 2-BRG, SAE NONE, Ø80 X 170L STD T/BOX		
	THIS DOCUMENT (AND THE INFORMATION SHOWN THEREON) IS CONFIDENTIAL AND PROPRIETARY AND SHALL NOT BE DISCLOSED TO OTHERS IN HARD COPY OR ELECTRONIC FORM, REPRODUCED BY ANY MEANS, OR USED FOR ANY PURPOSE WITHOUT WRITTEN CONSENT OF CUMMINS INC.	DATE 14NOV16		FOR INTERPRETATION OF DIMENSIONING AND TOLERANCING, SEE ASME Y14.5-2009	FIRST USED ON S4	STA	DWG SIZE A4