

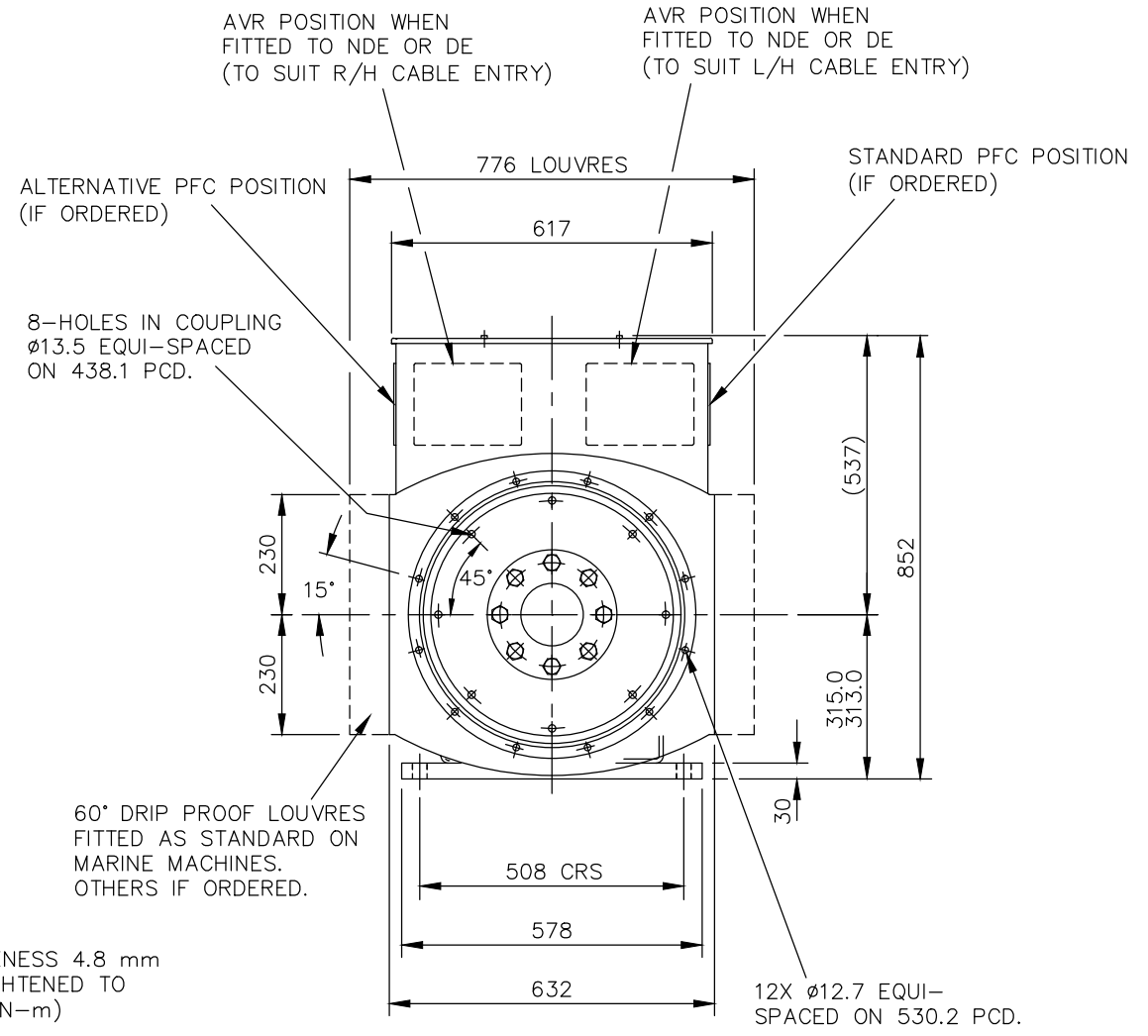
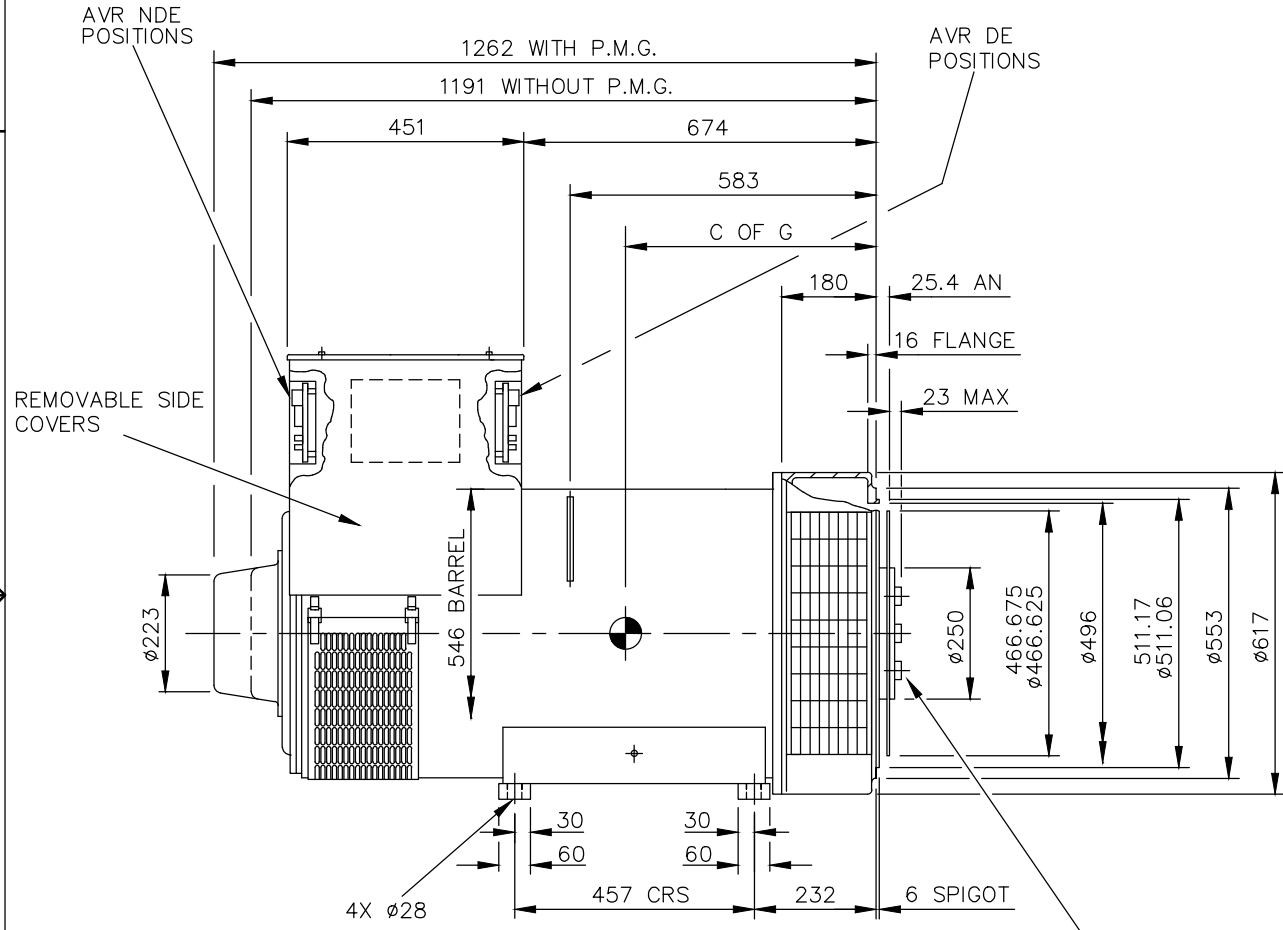
AutoCad

CORE	C OF G (mm)	WEIGHT(KG)
F	530	1160

REL NO	REV	NO	REVISION	DWN	CKD	APVD	DATE
ECO-171701	B	1	ZONE D4, ADDED WEIGHT (1160KG) FOR F CORE	SA	PN	S_NARAYANAN	04SEP17
		2	IN TITLE BLOCK DESCRIPTION S4L1S WAS S4	SA	PN	S_NARAYANAN	04SEP17

NOTE: -

- CUSTOMER MAY CUT CABLE ENTRY HOLES AS REQUIRED IN ANY OF THE FOUR TERMINAL BOX SIDES SUBJECT TO POSITION OF A.V.R, TERMINALS ETC.



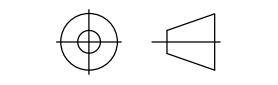
4-PLATE COUPLING TOTAL THICKNESS 4.8 mm
 HUB SECURING BOLTS TO BE TIGHTENED TO
 A TORQUE OF 48 kgf-m (479 N-m)

A

UNLESS OTHERWISE SPECIFIED, ALL DIMENSIONS ARE IN MILLIMETERS

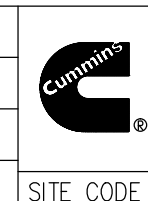
SIM TO 41-4540
DO NOT SCALE PRINT

SCALE
 1:10



THIS DOCUMENT (AND THE INFORMATION SHOWN THEREON) IS CONFIDENTIAL AND PROPRIETARY AND SHALL NOT BE DISCLOSED TO OTHERS IN HARD COPY OR ELECTRONIC FORM, REPRODUCED BY ANY MEANS, OR USED FOR ANY PURPOSE WITHOUT WRITTEN CONSENT OF CUMMINS INC.

DRAWN S_BALAMURUGAN
 CHECKED A_BIRARI
 APPROVED B_SURVE
 DATE 30JAN17



CUMMINS GENERATOR TECHNOLOGIES
 DRAWING, GENERAL ASSEMBLY
 S4L1S F 1-BRG SAE 1/14 STD T/BOX

FOR INTERPRETATION OF DIMENSIONING AND TOLERANCING, SEE ASME Y14.5-2009

FIRST USED ON
 S4

SITE CODE
 STA

DWG SIZE
 A4

CAD SHEET
 1 OF 1

4

3

2

1