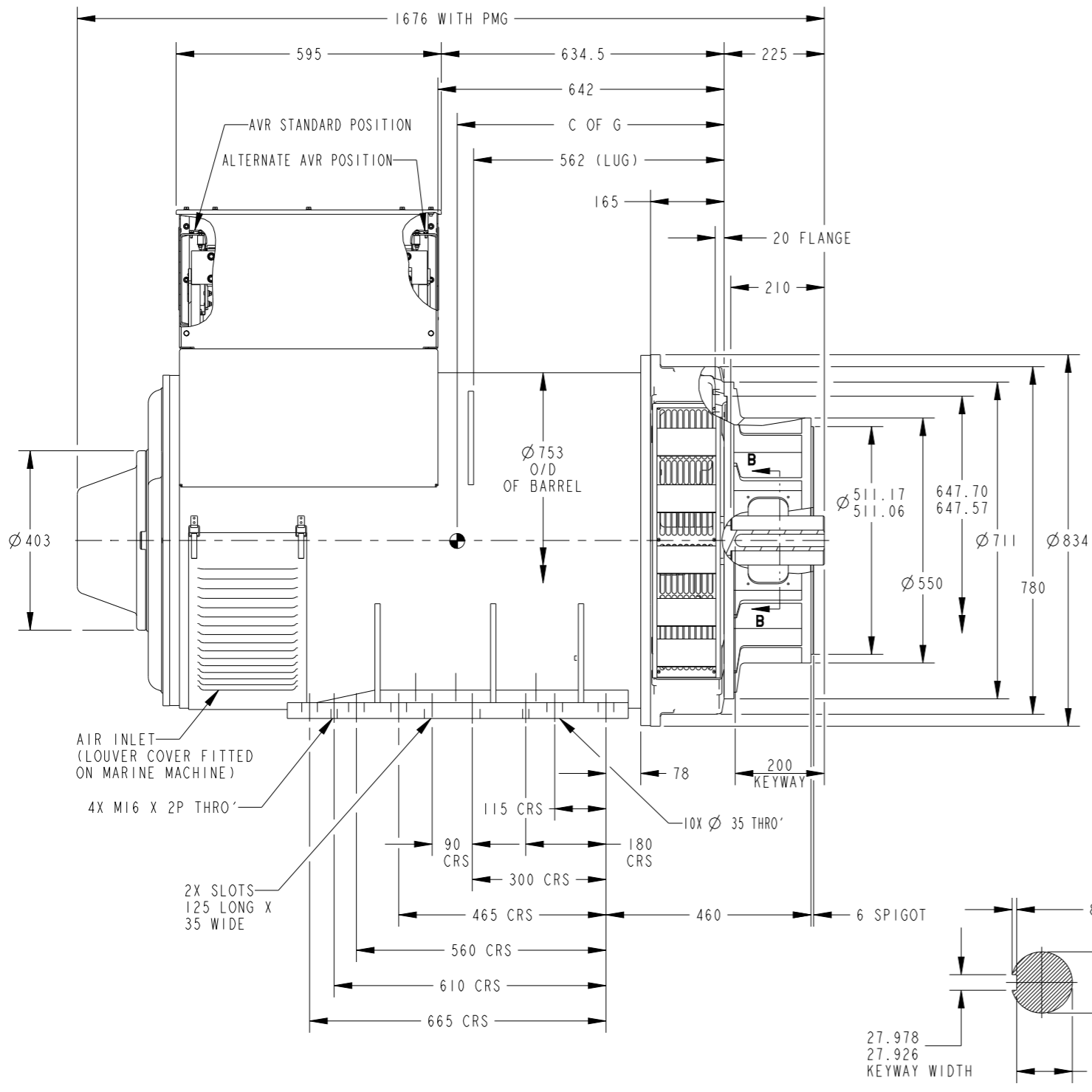


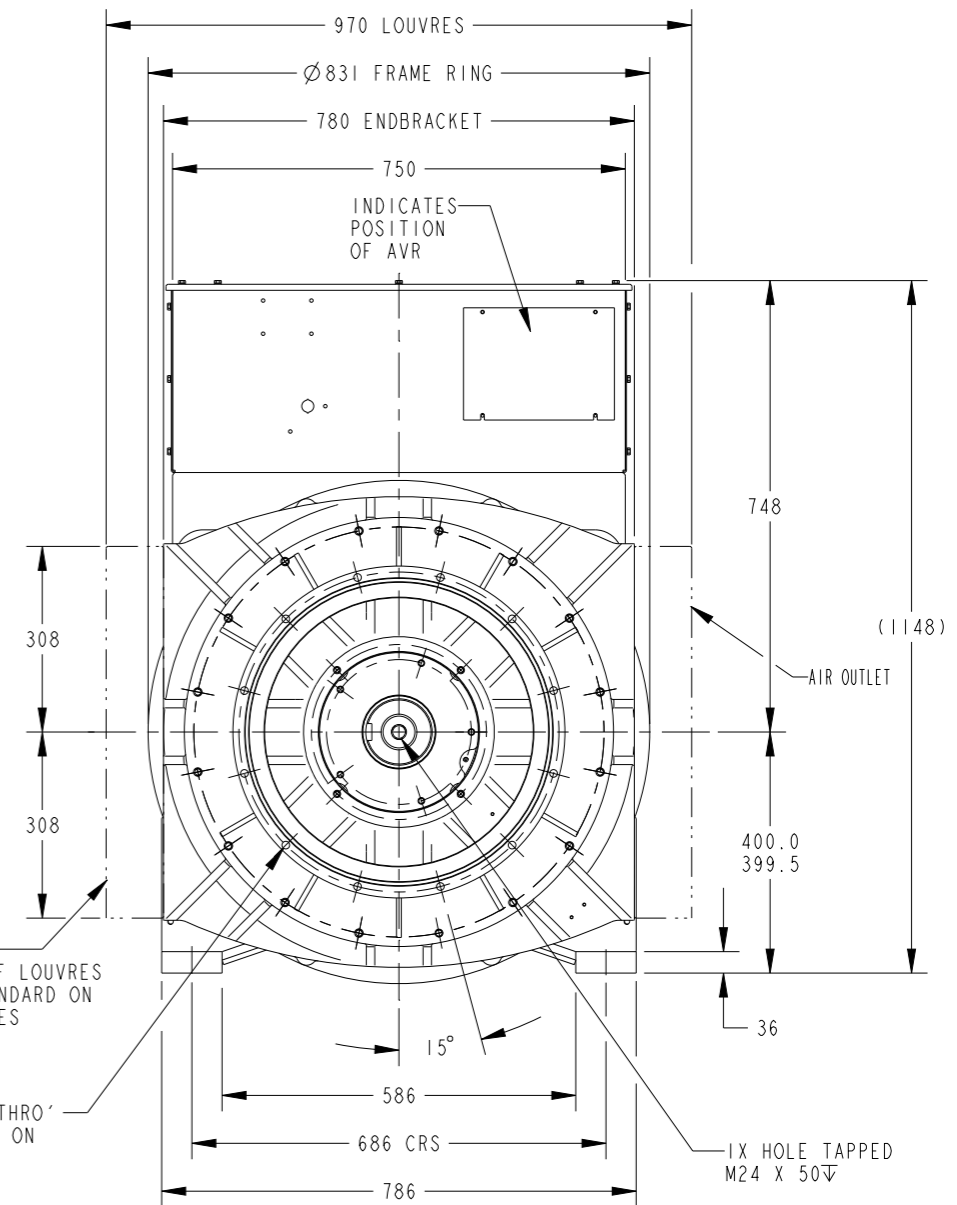
CORE	WEIGHT(KG)	C OF G
E	2102	566
F	2269	590

REL NO	REV	NO	REVISION	DWN	CKD	APVD	DATE
ECO-176832	A	1	RELEASED FOR PRODUCTION	KP	RH	I.SAUNDATTI	03APR18

NOTE:  
1. CUSTOMER MUST ENSURE THAT AIR INLET AND OUTLET POSITIONS ARE NOT OBSTRUCTED



DETAILS OF SHAFT EXTENSION  
SECTION B-B  
SCALE 0.150



UNLESS OTHERWISE SPECIFIED, ALL DIMENSIONS ARE IN MILLIMETERS	SIM TO -	DWN K_PATIL		CUMMINS GENERATOR TECHNOLOGIES	
	DO NOT SCALE PRINT	CKD R_HANABAR		DRAWING, GENERAL ASSEMBLY	
SCALE 0.120		APVD I_SAUNDATTI	SITE CODE	S6LIM-E/F, 2B, SAE 1, STD BOX, (MARINE)	
THIS DOCUMENT (AND THE INFORMATION SHOWN THEREON) IS CONFIDENTIAL AND PROPRIETARY AND SHALL NOT BE DISCLOSED TO OTHERS IN HARD COPY OR ELECTRONIC FORM, REPRODUCED BY ANY MEANS, OR USED FOR ANY PURPOSE WITHOUT WRITTEN CONSENT OF CUMMINS INC.	FOR INTERPRETATION OF DIMENSIONING AND TOLERANCING, SEE ASME Y14.5-2009	DATE 03APR18	FIRST USED ON	STA	CAD SHEET
			S6	A2	A060H697