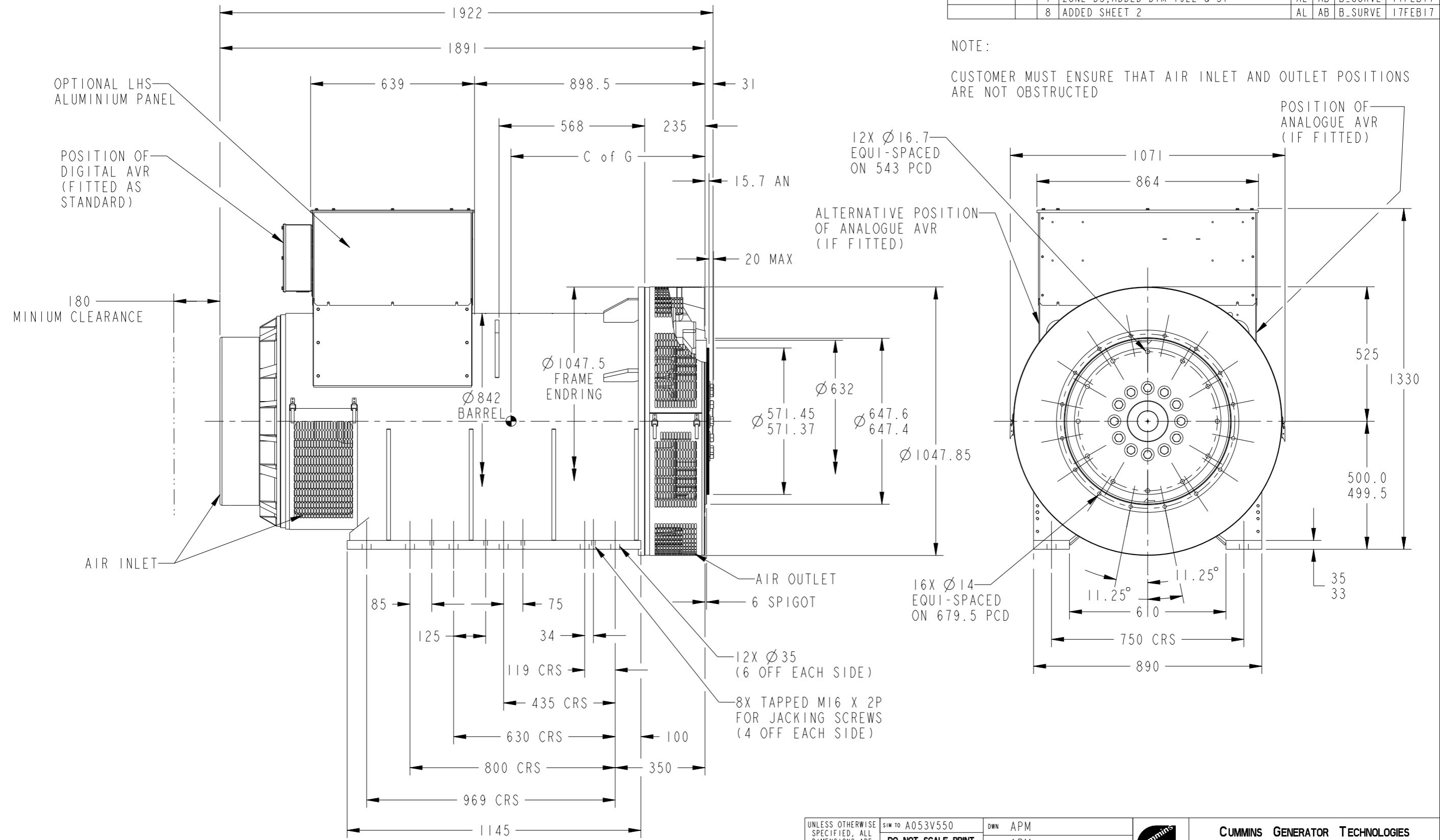


|        |           |
|--------|-----------|
| C of G | WEIGHT KG |
| 840    | 4400      |

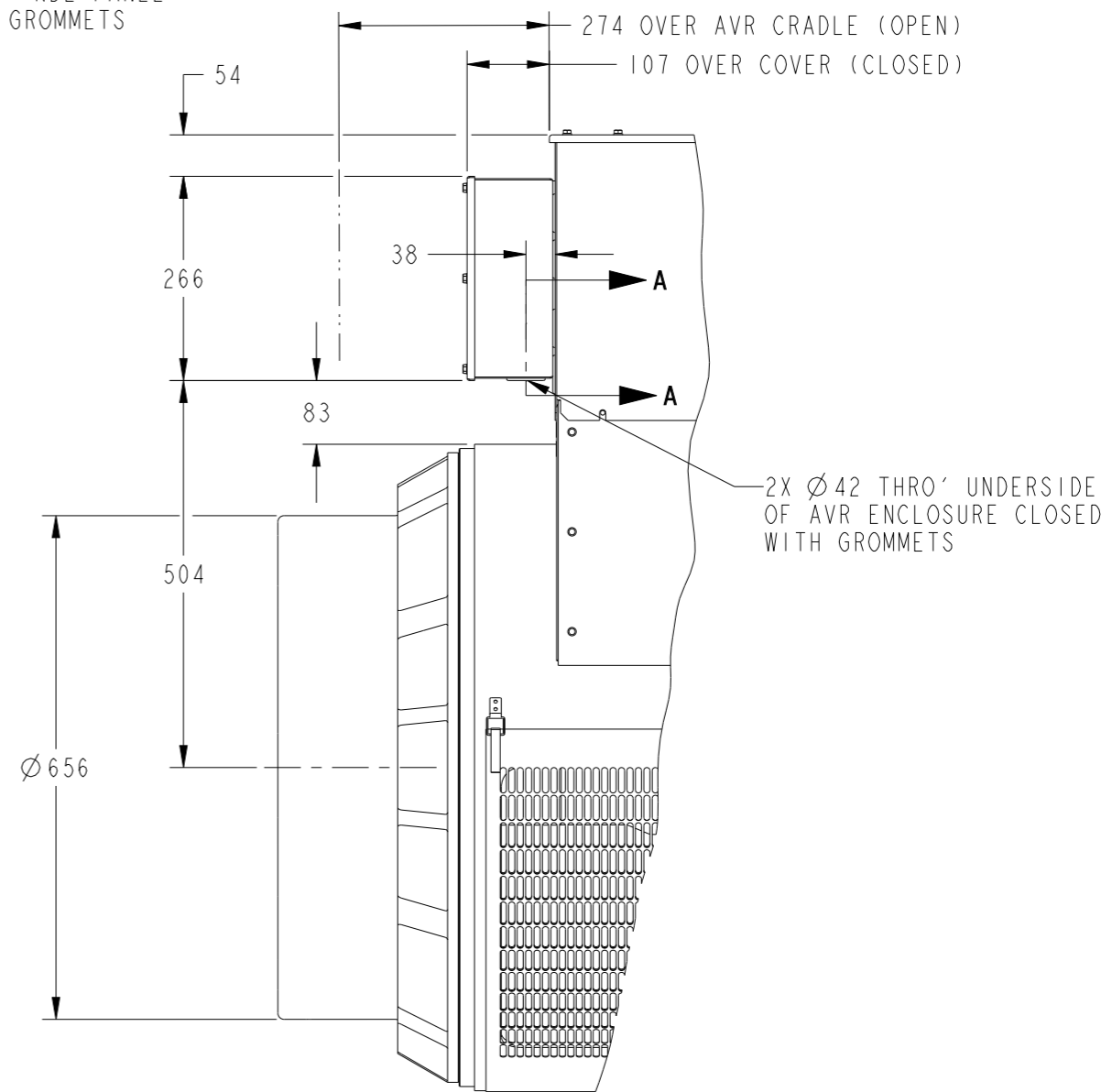
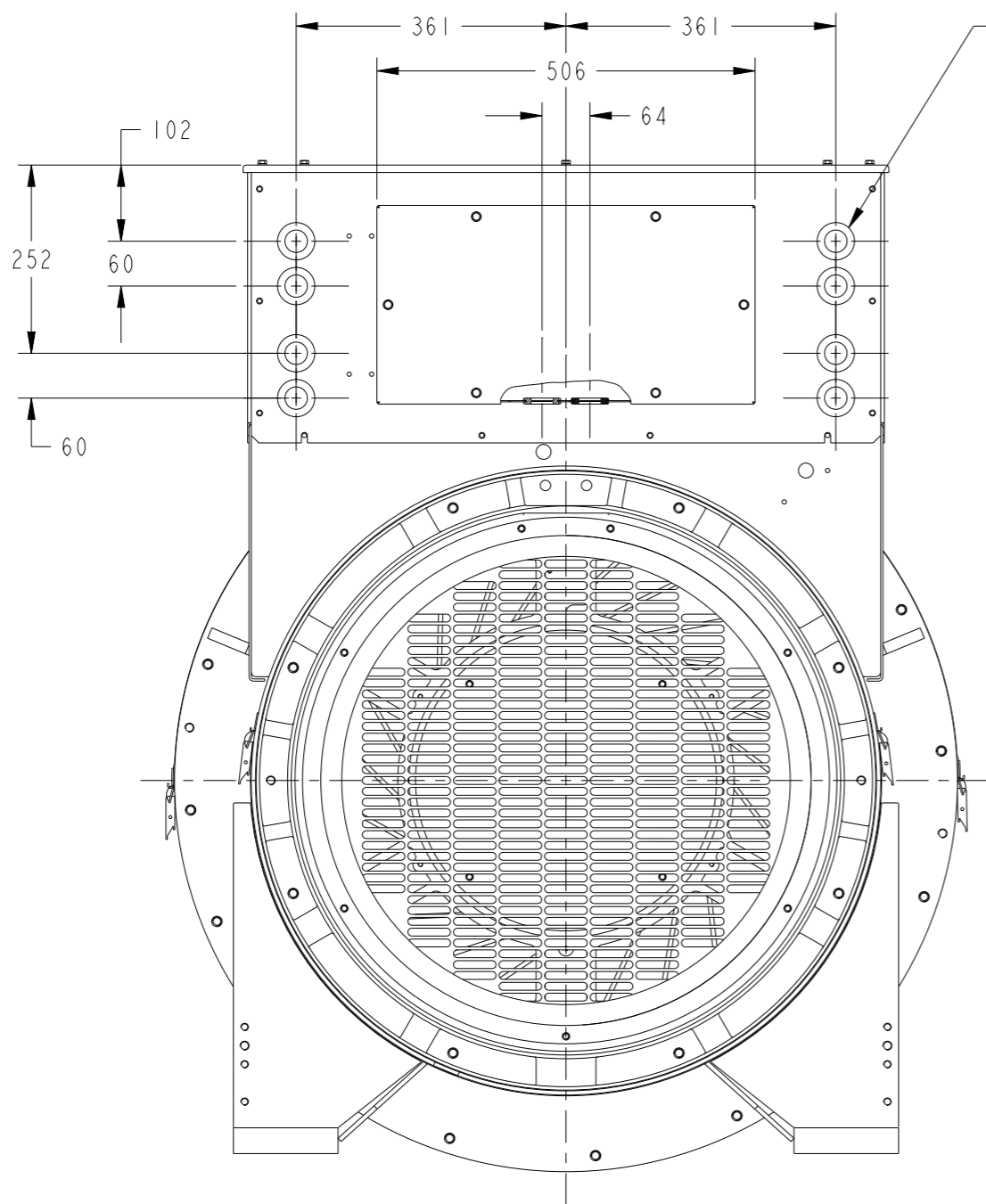
| REL NO     | REV | NO | REVISION                                | DWN | CKD | APVD    | DATE    |
|------------|-----|----|---|-----|-----|---------|---------|
| ECO-164856 | C   | 1  | ZONE C4, ADDED AVR BOX                  | AL  | AB  | B_SURVE | 17FEB17 |
|            |     | 2  | ZONE C4, ADDED NOTE FOR OPTIONAL LHS... | AL  | AB  | B_SURVE | 17FEB17 |
|            |     | 3  | ZONE C4, ADDED NOTE FOR AVR POSITION    | AL  | AB  | B_SURVE | 17FEB17 |
|            |     | 4  | ZONE B4, REMOVED DIM 656                | AL  | AB  | B_SURVE | 17FEB17 |
|            |     | 5  | ZONE C4, ADDED DIM 180                  | AL  | AB  | B_SURVE | 17FEB17 |
|            |     | 6  | ZONE C1, ADDED DIM 525                  | AL  | AB  | B_SURVE | 17FEB17 |
|            |     | 7  | ZONE D3, ADDED DIM 1922 & 31            | AL  | AB  | B_SURVE | 17FEB17 |
|            |     | 8  | ADDED SHEET 2                           | AL  | AB  | B_SURVE | 17FEB17 |

NOTE:  
CUSTOMER MUST ENSURE THAT AIR INLET AND OUTLET POSITIONS ARE NOT OBSTRUCTED



|  |   |                  |           |   |                  |
|--|---|------------------|-----------|---|------------------|
| UNLESS OTHERWISE SPECIFIED, ALL DIMENSIONS ARE IN MILLIMETERS  | SIM TO A053V550   | DWN APM          |           | CUMMINS GENERATOR TECHNOLOGIES          |                  |
|  | DO NOT SCALE PRINT  | CKD APM          |           | DRAWING, GENERAL ASSEMBLY               |                  |
| SCALE 1:10   |   | APVD SPA         | SITE CODE | FRAME7H (4P) 1-BRG-STD T/B SAE 0/18 AVR |                  |
| THIS DOCUMENT (AND THE INFORMATION SHOWN THEREON) IS CONFIDENTIAL AND PROPRIETARY AND SHALL NOT BE DISCLOSED TO OTHERS IN HARD COPY OR ELECTRONIC FORM, REPRODUCED BY ANY MEANS, OR USED FOR ANY PURPOSE WITHOUT WRITTEN CONSENT OF CUMMINS INC. | DATE 23NOV15  | FIRST USED ON P7 | STA       | DWG SIZE A2                             | A054F723         |
|  | FOR INTERPRETATION OF DIMENSIONING AND TOLERANCING, SEE ASME Y14.5-2009 |                  |           |   | CAD SHEET 1 of 2 |

| REL NO     | REV | NO | REVISION                                      | DWN | CKD | APVD    | DATE    |
|------------|-----|----|---|-----|-----|---------|---------|
| ECO-164856 | C   | 9  | ADDED VIEWS FOR AVR BOX AND GROMMETS LOCATION | AL  | AB  | B_SURVE | 17FEB17 |



PART SECTION A-A  
SCALE 1:6

|  |                    |   |           |   |                  |
|--|--------------------|---|-----------|---|------------------|
| UNLESS OTHERWISE SPECIFIED, ALL DIMENSIONS ARE IN MILLIMETERS  | SIM TO A053V550    | DWN APM   |           | CUMMINS GENERATOR TECHNOLOGIES          |                  |
|  | DO NOT SCALE PRINT | CKD APM   |           | DRAWING, GENERAL ASSEMBLY               |                  |
| SCALE 1:10   |                    | APVD SPA  | SITE CODE | FRAME7H (4P) 1-BRG-STD T/B SAE 0/18 AVR |                  |
| THIS DOCUMENT (AND THE INFORMATION SHOWN THEREON) IS CONFIDENTIAL AND PROPRIETARY AND SHALL NOT BE DISCLOSED TO OTHERS IN HARD COPY OR ELECTRONIC FORM, REPRODUCED BY ANY MEANS, OR USED FOR ANY PURPOSE WITHOUT WRITTEN CONSENT OF CUMMINS INC. | DATE 23NOV15       | FIRST USED ON P7  |           | STA                                     | DWG SIZE A2      |
|  |                    | FOR INTERPRETATION OF DIMENSIONING AND TOLERANCING, SEE ASME Y14.5-2009 |           |   | CAD SHEET 2 OF 2 |