

AutoCad

CORE	WEIGHT(KG)
F	1687

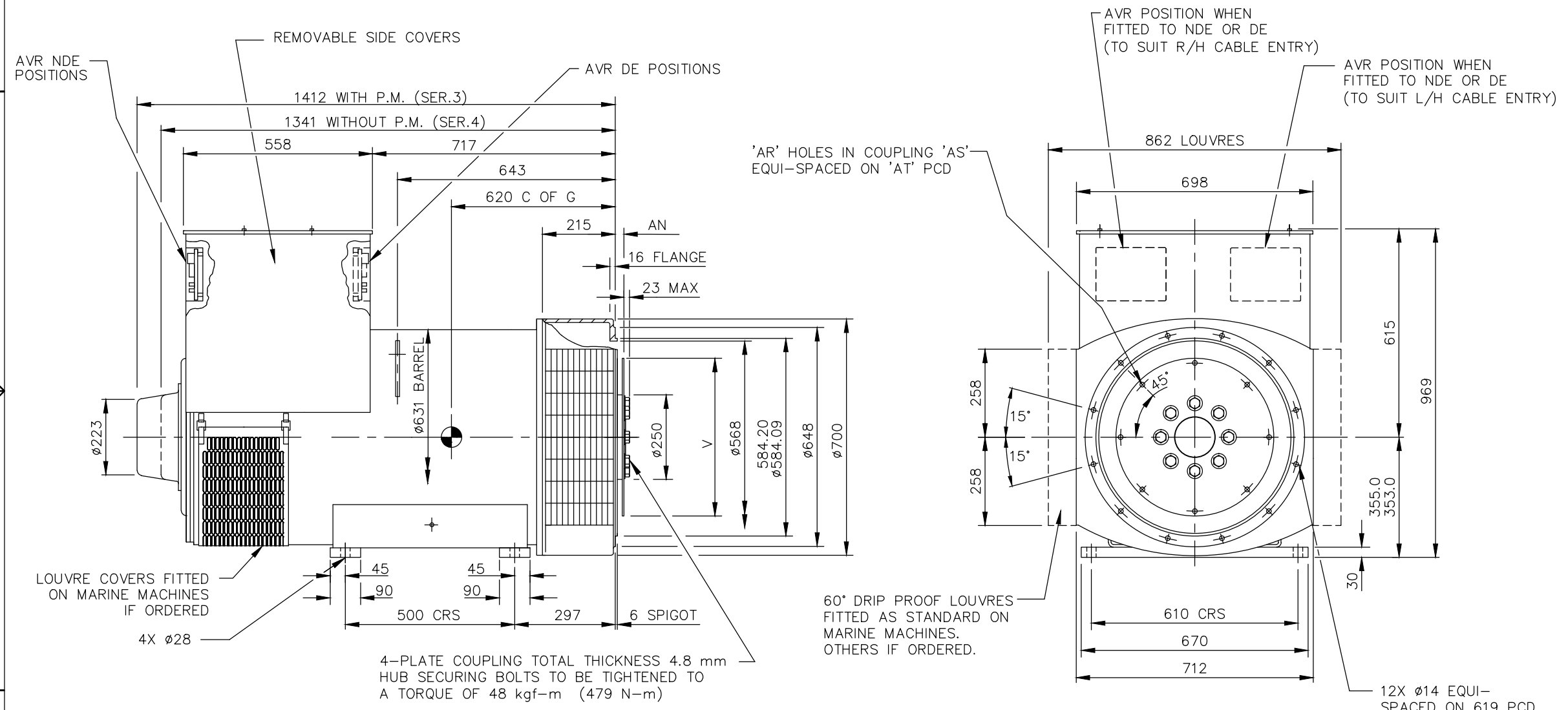
COUPLING DISC					
SAE NO	AN	AR	AS	AT	V
14	25.4	8	∅13.5	438.1	∅466.67
18	15.87	6	∅16.7	543	∅571.45

REL NO	REV	NO	REVISION
ECO-180418	A	1	PRODUCTION RELEASE

DWN	CKD	APVD	DATE
VDS	DGL	K.WEJRZANOWSKI	22AUG18

NOTE:

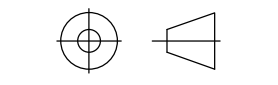
- CUSTOMER MAY CUT CABLE ENTRY HOLES AS REQUIRED IN ANY OF THE FOUR TERMINAL BOX SIDES SUBJECT TO POSITION OF AVR, TERMINALS, ETC.



UNLESS OTHERWISE SPECIFIED, ALL DIMENSIONS ARE IN MILLIMETERS

SIM TO 52-4672
DO NOT SCALE PRINT

SCALE
1:10



THIS DOCUMENT (AND THE INFORMATION SHOWN THEREON) IS CONFIDENTIAL AND PROPRIETARY AND SHALL NOT BE DISCLOSED TO OTHERS IN HARD COPY OR ELECTRONIC FORM, REPRODUCED BY ANY MEANS, OR USED FOR ANY PURPOSE WITHOUT WRITTEN CONSENT OF CUMMINS INC.

DRAWN V.SHIPPARKAR
CHECKED D.LEE
APPROVED K.WEJRZANOWSKI
DATE 22AUG18



CUMMINS GENERATOR TECHNOLOGIES
DRAWING, GENERAL ASSEMBLY
S5 F SAE 0.5-14/18 1-BRG STD T/BOX

FOR INTERPRETATION OF DIMENSIONING AND TOLERANCING, SEE ASME Y14.5-2009

FIRST USED ON
S5

SITE CODE
STA

DWG SIZE
A4

CAD SHEET
1 OF 1