

AutoCad

4

3

2

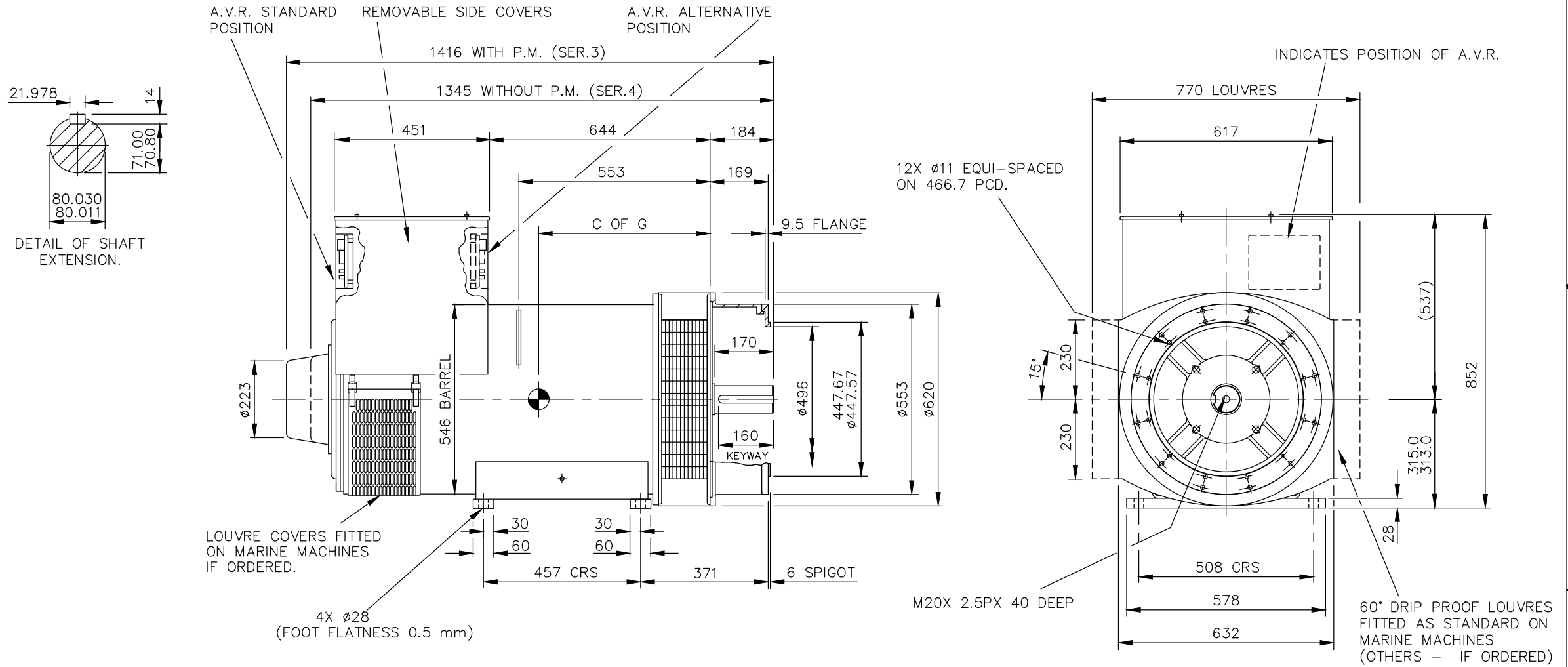
1

CORE	C OF G (mm)	WEIGHT (KG)
F	500	1160

REL NO	REV	NO	REVISION	DWN	CKD	APVD	DATE
ECO-172296	B	1	ZONE D4, ADDED WEIGHT (1160 KG) FOR F CORE	PK	PN	S_NARAYANAN	14SEP17
		2	IN TITLE BLOCK, DESCRIPTION S4L1S F 2-BRG, SAE 2, Ø80 X 170L, STD T/BOX WAS S4 F 2-BRG, ADAPTER-SAE 2 INCORPORATING, ADAPTER RING SAE1 TO SAE 2	PK	PN	S_NARAYANAN	14SEP17

NOTE: -

- 1. CUSTOMER MAY CUT CABLE ENTRY HOLES AS REQUIRED IN ANY OF THE FOUR TERMINAL BOX SIDES SUBJECT TO POSITION OF A.V.R. TERMINALS, ETC.

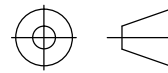


UNLESS OTHERWISE SPECIFIED, ALL DIMENSIONS ARE IN MILLIMETERS

SIM TO 41-4519

DO NOT SCALE PRINT

SCALE  
1:10



THIS DOCUMENT (AND THE INFORMATION SHOWN THEREON) IS CONFIDENTIAL AND PROPRIETARY AND SHALL NOT BE DISCLOSED TO OTHERS IN HARD COPY OR ELECTRONIC FORM, REPRODUCED BY ANY MEANS, OR USED FOR ANY PURPOSE WITHOUT WRITTEN CONSENT OF CUMMINS INC.

DRAWN A\_LAHEKAR

CHECKED A\_BIRARI

APPROVED B\_SURVE

DATE 14NOV16

FOR INTERPRETATION OF DIMENSIONING AND TOLERANCING, SEE ASME Y14.5-2009

FIRST USED ON  
S4



SITE CODE

STA

CUMMINS GENERATOR TECHNOLOGIES

DRAWING, GENERAL ASSEMBLY

S4L1S F 2-BRG, SAE 2, Ø80 x 170L, STD T/BOX

DWG SIZE  
A4

A056N951

CAD SHEET  
1 OF 1

4

3

2

1

A

A