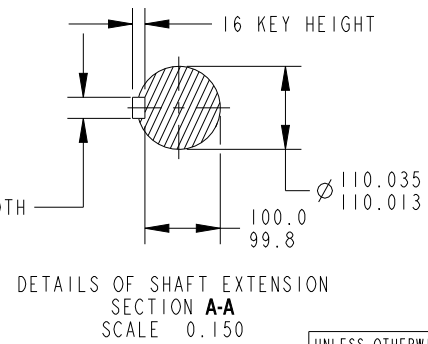
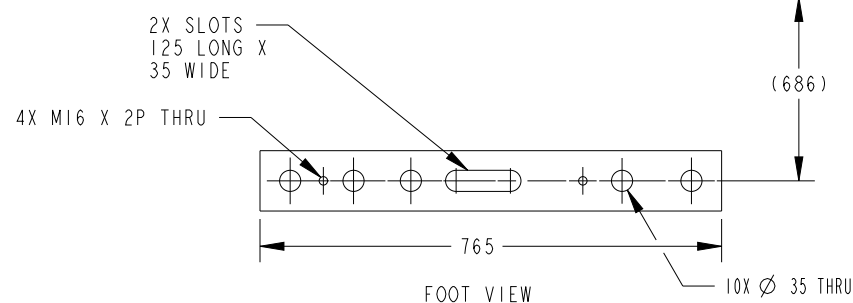
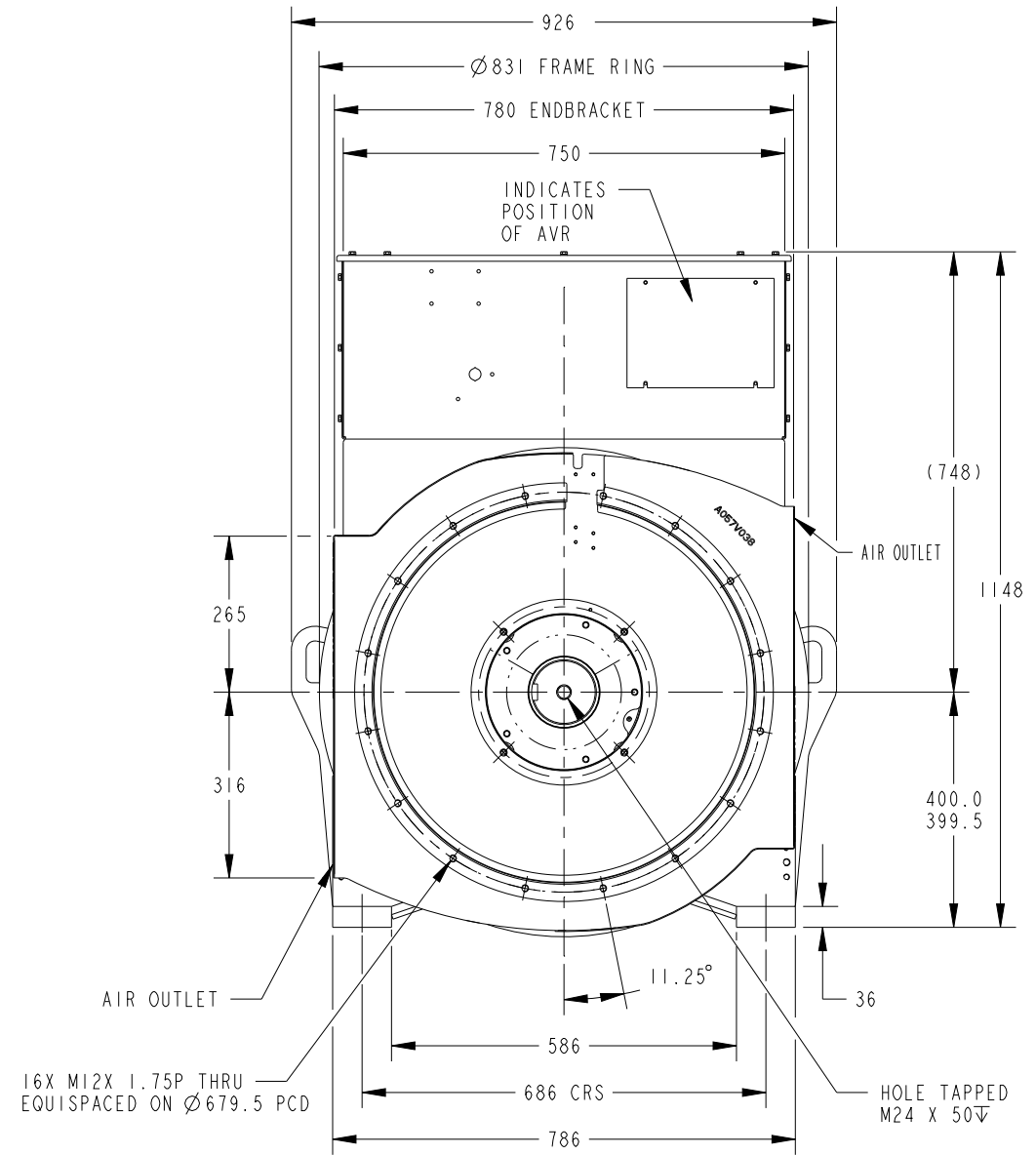
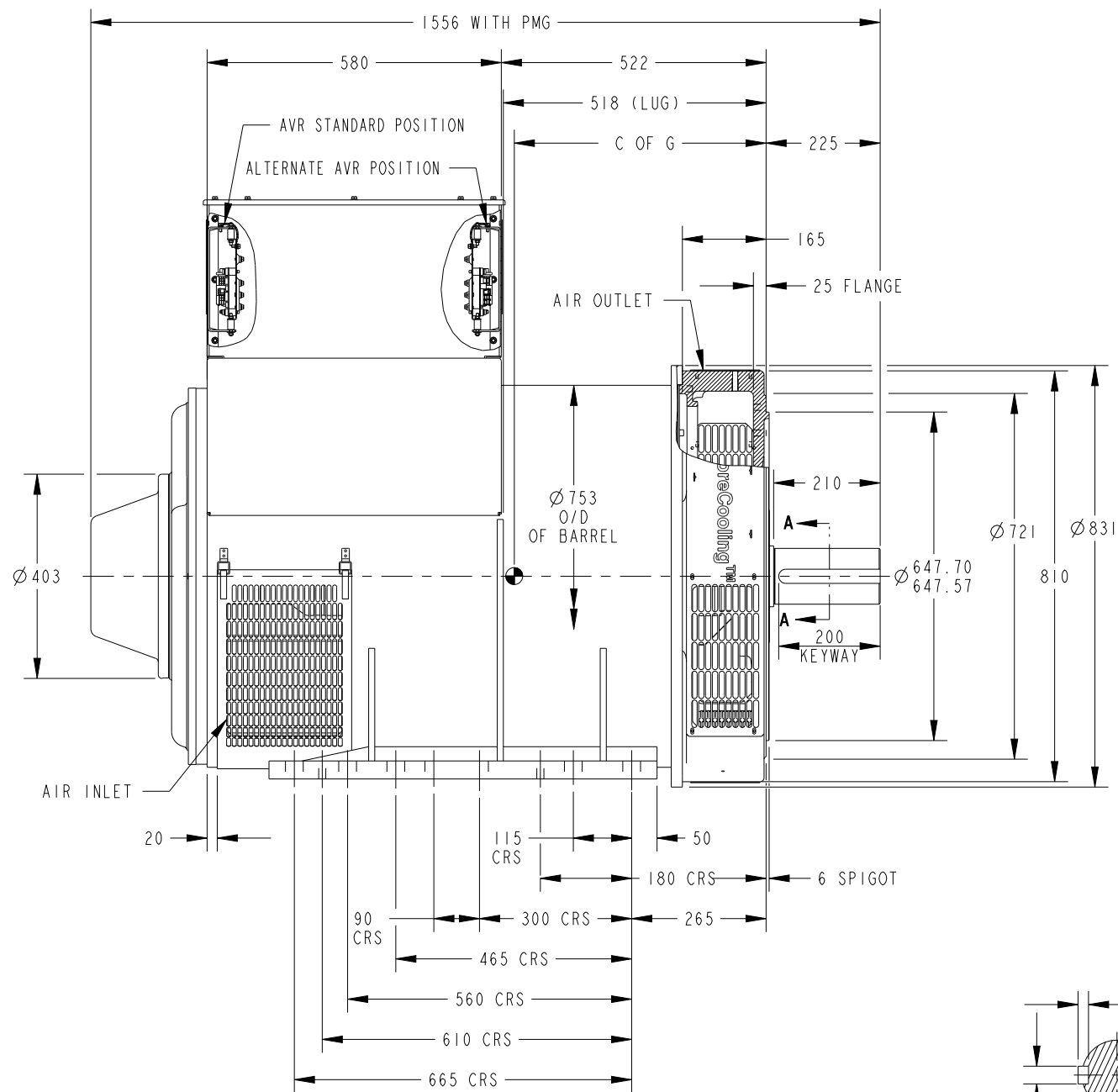


CORE	WEIGHT(KG)	C OF G
C	1970	519
D	2030	533

REL NO	REV	NO	REVISION	DWN	CKD	APVD	DATE
ECO-182623	C	1	ZONE D3,ADD DIM 225	KTP	RDH	I.SAUNDATTI	01 JAN 19
		2	ZONE D4, FOR C CORE WEIGHT 1970 WAS 1897 AND FOR D CORE WEIGHT 2030 WAS 1953	KTP	RDH	I.SAUNDATTI	01 JAN 19
		3	ZONE B2, DIM 16 WAS 8	KTP	RDH	I.SAUNDATTI	01 JAN 19
		4	ZONE B4, ADD DIM 20	KTP	RDH	I.SAUNDATTI	01 JAN 19
		5	ZONE A3 & A4, ADD FOOT VIEW	KTP	RDH	I.SAUNDATTI	01 JAN 19

NOTE:

1. CUSTOMER MUST ENSURE THAT AIR INLET AND OUTLET POSITIONS ARE NOT OBSTRUCTED



UNLESS OTHERWISE SPECIFIED, ALL DIMENSIONS ARE IN MILLIMETERS
 SCALE 0.120
 THIS DOCUMENT (AND THE INFORMATION SHOWN THEREON) IS CONFIDENTIAL AND PROPRIETARY AND SHALL NOT BE DISCLOSED TO OTHERS IN HARD COPY OR ELECTRONIC FORM, REPRODUCED BY ANY MEANS, OR USED FOR ANY PURPOSE WITHOUT WRITTEN CONSENT OF CUMMINS INC.

SIM TO -
DO NOT SCALE PRINT
 DWN P. KASVEKAR
 CKD S. KARMARKAR
 APVD I. SAUNDATTI
 DATE 27 JUL 17
 FOR INTERPRETATION OF DIMENSIONING AND TOLERANCING, SEE ASME Y14.5-2009
 FIRST USED ON S6

	CUMMINS GENERATOR TECHNOLOGIES	
	DRAWING, GENERAL ASSEMBLY S6LID-C/D, 2B, SAE NONE, STD BOX, 400 CH	
SITE CODE STA	DWG SIZE A2	A058G264
CAD SHEET 1 of 1		1