

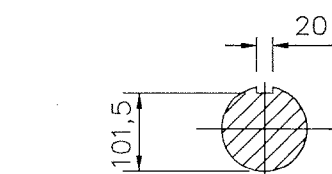
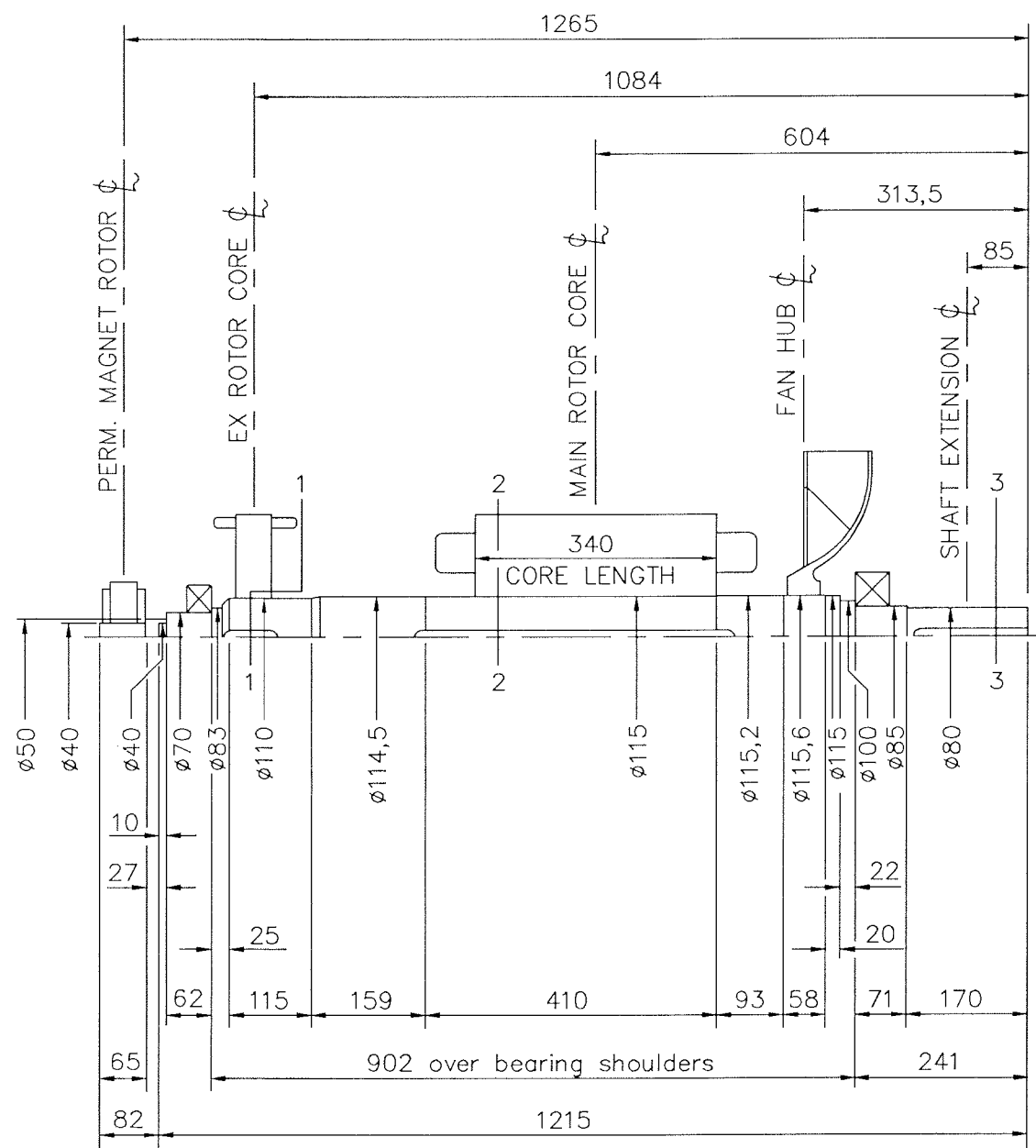
DL15-12482

ISSUE  
A

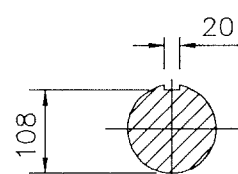
IF IN DOUBT-ASK

DO NOT SCALE

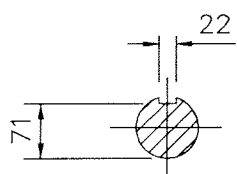
FIRST W.O.



SECTION 1-1



SECTION 2-2



SECTION 3-3

NOTES!

SHAFT STIFFNESS: -

THE STIFFNESS OF THE SHAFT BETWEEN THE MAIN ROTOR CORE  $\phi$  AND THE SHAFT EXTENSION  $\phi$  IS  $14,08 \times 10^6 \text{ kgcm/radian}$  (STIFFENING EFFECT OF MAIN ROTOR CORE IS NOT INCLUDED IN THIS FIGURE)

SHAFT MATERIAL: -

STEEL - 080M40 TO BS970 PART 1 (APPROVED BY MARINE AUTHORITIES WHEN APPROPRIATE).

MAXIMUM RECOMMENDED VIBRATORY STRESS LEVEL IN THE SHAFT IS  $34,47 \times 10^6 \text{ N/m}^2$  FOR A SPEED RANGE OF 0,95 TO 1,1 x NOMINAL SPEED, AND  $68,94 \times 10^6 \text{ N/m}^2$  FOR RUN THROUGH CONDITIONS, FOR INDUSTRIAL MACHINES.

FOR MARINE AUTHORITIES, THEIR APPROPRIATE RULES WILL APPLY.

NEWAGE INTERNATIONAL LTD. SHOULD BE NOTIFIED OF ANY ROTORS NOT COMPLYING WITH THESE RULES.

NEWAGE INTERNATIONAL LTD. BALANCE ROTORS TO COMPLY WITH INTERNATIONAL STD. I.S.O. 1940 GRADE 2,5 AND B.S. 6861 PART 1 GRADE 2,5.

FOR UNBALANCED MAGNETIC PULL (U.M.P.) FORCES REFER TO GENERATOR MANUAL.

COMPONENT	Wt kg	WR <sup>2</sup> kgm <sup>2</sup>
EX.ROTOR	31,290	0,5100
MAIN ROTOR	208,880	2,9690
FAN	9,910	0,2630
SHAFT	82,668	0,1241
P.M. STUB SHAFT	0,955	0,0002
P.M. EX. ROTOR	4,260	0,0120
-	-	-
-	-	-
TOTAL	337,963	3,8783

4/3000/1	A	S.M.C.	22.06.00	ORIGINAL ISSUE
MOD'N	ISSUE	DRAWN	DATE	ALTERATION

CONVERSION FACTORS		
TO CONVERT	TO	DIVIDE BY
kg	lb	0,453592
kg m <sup>2</sup>	lb ft <sup>2</sup>	0,04214
kgcm/rad	lbin/rad	1,1521246
N/m <sup>2</sup>	lbf/in <sup>2</sup>	6894,76

CERTIFIED PRINT (ONLY IF SIGNED)		
BY		
DATE		
DRAWN	S.M.C.	22.06.00
CHECKED	S.M.C.	26/6/00
APPROVED	S.F.A.	26/6/00

HC434 2D - TWO BEARING MOMENTS OF INERTIA AND SHAFT DETAILS
<b>NEWAGE INTERNATIONAL Ltd</b> STAMFORD ENGLAND

SCALE NTS	FIRST W.O.
	UNIT OF MEASUREMENT MILLIMETRES (mm)
DL15-12482	ISSUE A