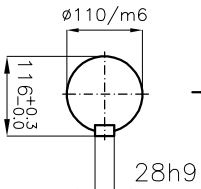


Core size	Poles	Rated volt U (kV)	Frequency (Hz)	H	A	BB	C	B	B1	B2	B3	L	HD	J (kgm <sup>2</sup> )	Weight (kg)
g	6	6.3/6.6/6.6	50/50/60											23.3	2900
g	3	3.3/4.16	50/60											23.9	3000
h	4	3.3/6.3/6.10/5/4.16/6.6	50/60	500	730	1790	225	525	925	1325	1625	2470	1400	27	3300
h	11	3.3/6.3/6.6/4.16/6.6	50/60											27.6	3350
i	10.5/11	3.3/6.3/6.6/4.16/6.6	50/60											30.1	3600
i	10.5/11	3.3/6.3/6.6/4.16/6.6	50											31	3650



Design B34 (option B35 see attach. ST-Coupling-01)  
 Cooling IC01  
 Protection IP23

No.	Type	Weight [kg]	$\sim J$ [kgm <sup>2</sup> ] (Moment of inertia)	$\sim X$ [mm] (Center of gravity)	Remarks
1					
2					

Copyright reserved Alle rechte vorbehalten Drechturlic de reproducere rezervate Tous droits de reproduction reserves

FILE: 1/1 DATE: 29.11.2013 Dimension drawing

DESIGNED M.P. CHECKED N.P. GENERATOR DIG 110



PART No. ST 110-02

Issue A

ALTERATION

DATE DRAWN

Scale: 1:20

Desen original/Original Issue

Issue MOD.