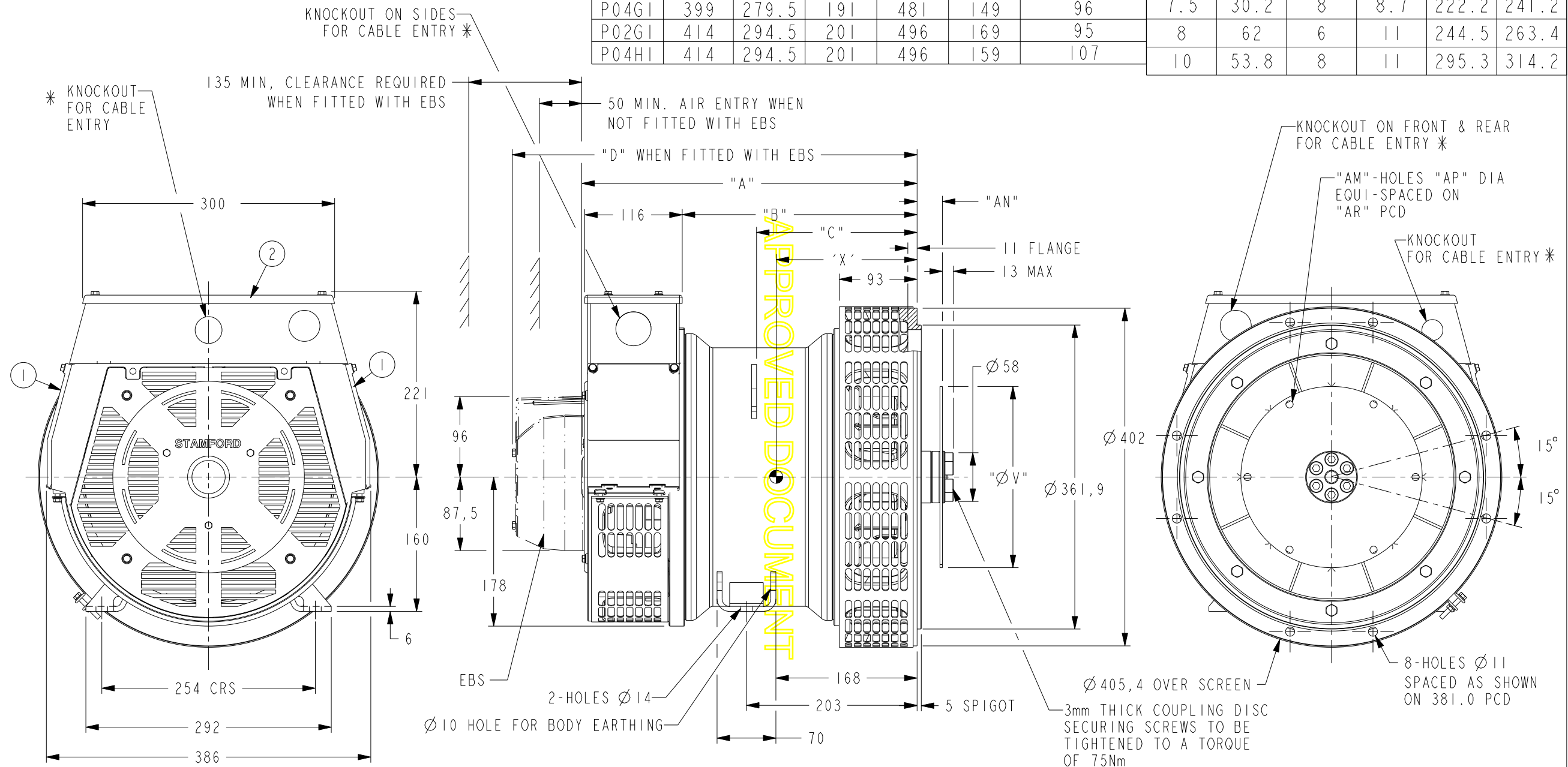


DRG. SIZE C	REL. PHASE P	PART No 19-1001	ISSUE D
----------------	-----------------	--------------------	------------

IF IN DOUBT-ASK
DO NOT SCALE

FRAME	A	B	C	D	x	NETT WT. (Kg)
P02E1	399	279.5	191	481	160	84
P04F1	399	279.5	191	481	157	89
P02F1	399	279.5	191	481	155	90
P04G1	399	279.5	191	481	149	96
P02G1	414	294.5	201	496	169	95
P04H1	414	294.5	201	496	159	107

COUPLING DISC					
SAE	"AN"	"AM"	"AP"	"AR"	"V"
6.5	30.2	6	8.7	200.0	215.8
7.5	30.2	8	8.7	222.2	241.2
8	62	6	11	244.5	263.4
10	53.8	8	11	295.3	314.2



- ① - REMOVABLE COVERS FOR ACCESS TO ELECTRONIC CONTROL
- ② - REMOVABLE COVER FOR ACCESS TO MAIN TERMINALS
- * FOR KNOCKOUT DETAILS REFER TERMINAL BOX DRAWING

MOD.	ISSUE	DRAWN	DATE	MODIFICATION
4-9667-82	D	BSR	18/06/09	PRO-E DRAWING CONVERTED IN TO DXF
4-9346-30	C	BJ	19/02/08	NOTES FOR KNOCKOUT DETAILS ADDED
4-9111-08	B	DW	5/7/07	ADDED PO E/F/G 2-POLE INTO TITLE AND TABLE
4-8440-42	A	SMJ	25.12.06	ORIGINAL ISSUE

CONFIDENTIAL		PROPERTY OF CUMMINS GENERATOR TECHNOLOGIES LTD.		POF/G/H 4-POLE - POE/F/G 2-POLE I-BEARING ALTERNATOR SAE 4 ADAPTOR SAE 6.5/7.5/8 &10 COUPLING	
DIMENSIONS IN MILLIMETRES (MM) AT 20°C		PROJECTION 		DRG. SIZE C	SCALE 3:10
UNLIMITED DIMS ± --		DRAWN SMJ	25.12.06	REL. PHASE P	PART No 19-1001
		CHECKED DW	17/3/08	ISSUE D	
		APPROVED SMH	17/3/08	SHEET 1 OF 1	SHEETS