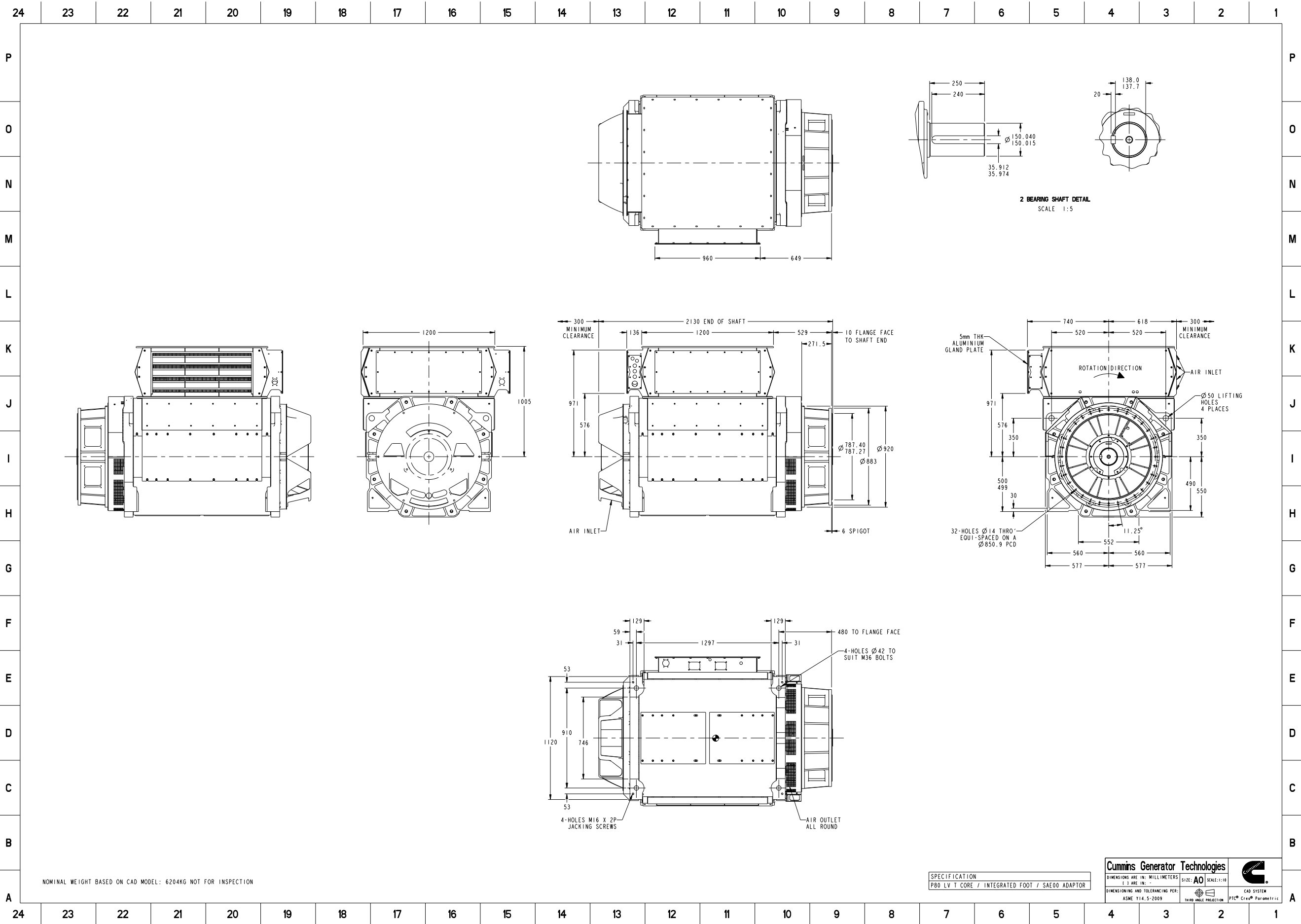


Document Generated: 24SEP2020 06:29 GMT



Document Generated: 24SEP2020 06:29 GMT

Cummins Data Classification:
Cummins Confidential

This document (and the information shown thereon) is **Confidential and Proprietary** and shall not be disclosed to others in hard copy or electronic form, reproduced by any means, or used for any purpose without written consent of Cummins Inc.

Part Number: **80-2392** Part Revision: **D**
 Part Name: **ARRANGEMENT, GENERATOR GENERAL**
 Drawing Category: **Outline (Tabulation)** State: **Released** Sheet 2 of 3

SPECIFICATION P80 LV T CORE / INTEGRATED FOOT / SAE00 ADAPTOR	Cummins Generator Technologies			
	DIMENSIONS ARE IN: MILLIMETERS	SIZE: A0		SCALE: 1:10
	DIMENSIONING AND TOLERANCING PER: ASME Y14.5-2009			CAD SYSTEM PTC® Creo® Parametric



Part Number: 80-2392

Change Notice	CN00024130	Alternates	
Manufacturer Part (MEP)	No	Usage	Production Only
Release Phase Code	Production (P)	Drawing Specification	DS80-2392
External Regulations	No External Regulation		

3D image provided when available for visual reference only.

Associated Specifications

Number	Name	Type	Category	Sub-Category
ESA030B356	SPECIFICATION,MATERIAL	Engineering Specification	Material Specification	Prohibited and Restricted Prohibited and Restricted

Drawing Revision Information

Description of Change(s)
WEIGHT, C OF G AND QUANTITY OF ADAPTOR HOLES CORRECTED.

Drawing Authorization

Drafter	Sachin Ashok Ugale	Date	24SEP2020
Checker	Andrew Savill	Date	24SEP2020
Approver	NO APPROVAL REQUIRED	Date	

Document Generated: 24SEP2020 06:29 GMT