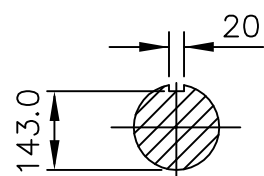
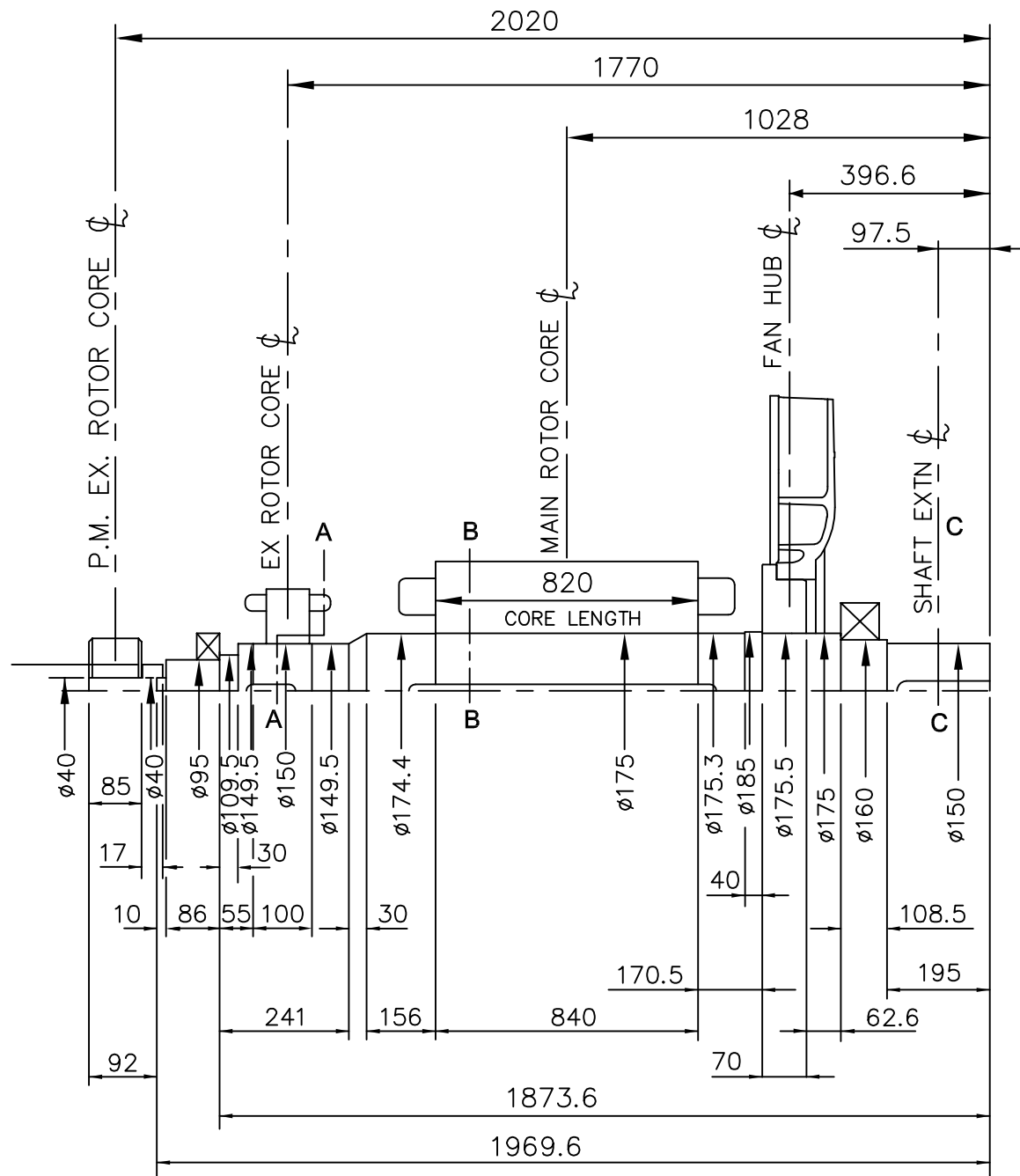


REL NO	REV	NO	REVISION	DWN	CKD	APVD	DATE
ECO-160999	C	1	ZONE B3, 108.5 WAS 103.5, 1873.6 WAS 1869.6, 1969.6 WAS 1965.6, 62.6 WAS 66.6, 70 WAS 67	RT	AB	D_WORTHINGTON	26APR16
		2	ZONE D3,D4, 396.6 WAS 391.6, 1028 WAS 1023, 1770 WAS 1765, 2020 WAS 2015	RT	AB	D_WORTHINGTON	26APR16
		3	ZONE C3,C4, SECTION A-A WAS 1-1, B-B WAS 2-2, C-C WAS 3-3	RT	AB	D_WORTHINGTON	26APR16
		4	CHANGED THE DOCUMENT FAMILY IN PLM	RT	AB	D_WORTHINGTON	26APR16
		5	ZONE B2, 329.98 WAS 329.19, 1.169 WAS 1.166, 1699.617 WAS 1689.828, 54.4981 WAS 54.4956	RT	AB	D_WORTHINGTON	26APR16

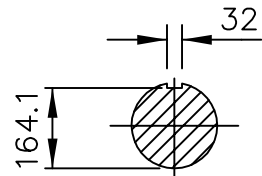
NOTES:

- SHAFT STIFFNESS: -
THE STIFFNESS OF THE SHAFT BETWEEN THE MAIN ROTOR CORE ϕ AND SHAFT EXTENSION ϕ IS 70.876×10^6 KGCM/RAD (STIFFNESS EFFECT OF THE MAIN ROTOR CORE IS NOT INCLUDED IN THIS FIGURE).
- SHAFT MATERIAL: - STEEL
MARINE SHAFTS, APPROVED BY MARINE AUTHORITIES AS APPROPRIATE C40E TO BSEN 10083

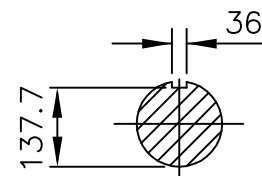
INDUSTRIAL SHAFTS, C40E OR C45E TO BSEN 10083 OR GB 699 TYPE 45
- MAXIMUM RECOMMENDED VIBRATORY STRESS LEVEL IN THE SHAFT IS 34.47×10^6 N/M² FOR SPEED RANGE OF 0.95 TO 1.1 X NOMINAL SPEED AND 68.94×10^6 N/M² FOR RUN THROUGH CONDITIONS, FOR INDUSTRIAL MACHINES. FOR MARINE AUTHORITIES, THEIR APPROPRIATE RULES WILL APPLY.
- CUMMINS GENERATOR TECHNOLOGIES LTD SHOULD BE NOTIFIED OF ANY ROTORS NOT COMPLYING WITH THESE RULES. CUMMINS GENERATOR TECHNOLOGIES LTD BALANCE ROTORS TO COMPLY WITH INTERNATIONAL STD BS ISO 1940 PARTS 1 AND 2. BALANCE GRADE 2.5
- FOR UNBALANCED MAGNETIC PULL (U.M.P.) REFER TO THE FACTORY.



SECTION A-A



SECTION B-B



SECTION C-C

COMPONENT	Wt(KG)	WR ² (KGM ²)
EX.ROTOR	62.258	0.9988
MAIN ROTOR	1222.991	47.4835
FAN	37.27	4.049
FAN HUB	39.22	0.779
SHAFT	329.98	1.169
P.MAG.ROTOR	6.970	0.0190
STUB SHAFT	0.929	0.0003
TOTAL	1699.617	54.4981

CONVERSION FACTORS		
TO CONVERT	TO	DIVIDE BY
KG	LB	0.453592
KG M ²	LB FT ²	0.04214
KGCM/RAD	LBIN/RAD	1.1521246
N/M ²	LBF/IN ²	6894.76

UNLESS OTHERWISE SPECIFIED, ALL DIMENSIONS ARE IN MILLIMETERS	SIM TO -----	DRAWN	APM		CUMMINS GENERATOR TECHNOLOGIES		
	DO NOT SCALE PRINT	CHECKED	AP		DRAWING, TORSIONAL		
SCALE		APPROVED	SPA	SITE CODE	P7H 2 BRG, MOMENT OF INERTIA AND SHAFT DETAILS		
---		DATE	21JAN15		STA	DWG SIZE	A051X620
THIS DOCUMENT (AND THE INFORMATION SHOWN THEREON) IS CONFIDENTIAL AND PROPRIETARY AND SHALL NOT BE DISCLOSED TO OTHERS IN HARD COPY OR ELECTRONIC FORM, REPRODUCED BY ANY MEANS, OR USED FOR ANY PURPOSE WITHOUT WRITTEN CONSENT OF CUMMINS INC.		FOR INTERPRETATION OF DIMENSIONING AND TOLERANCING, SEE ASME Y14.5-2009	FIRST USED ON	---	A3		1 OF 1