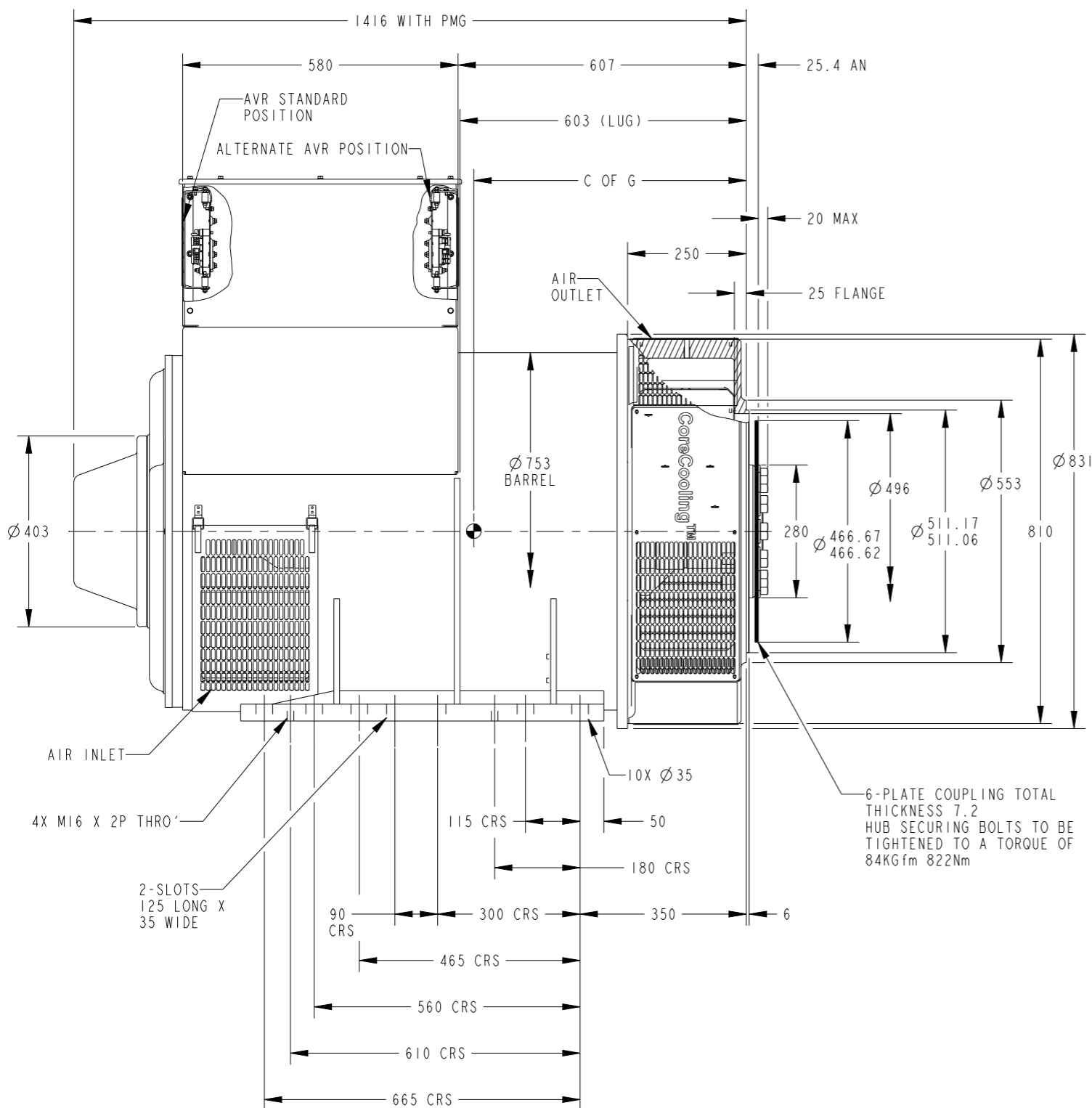


CORE	WEIGHT(KG)	C OF G
C	1897	618
D	1953	639

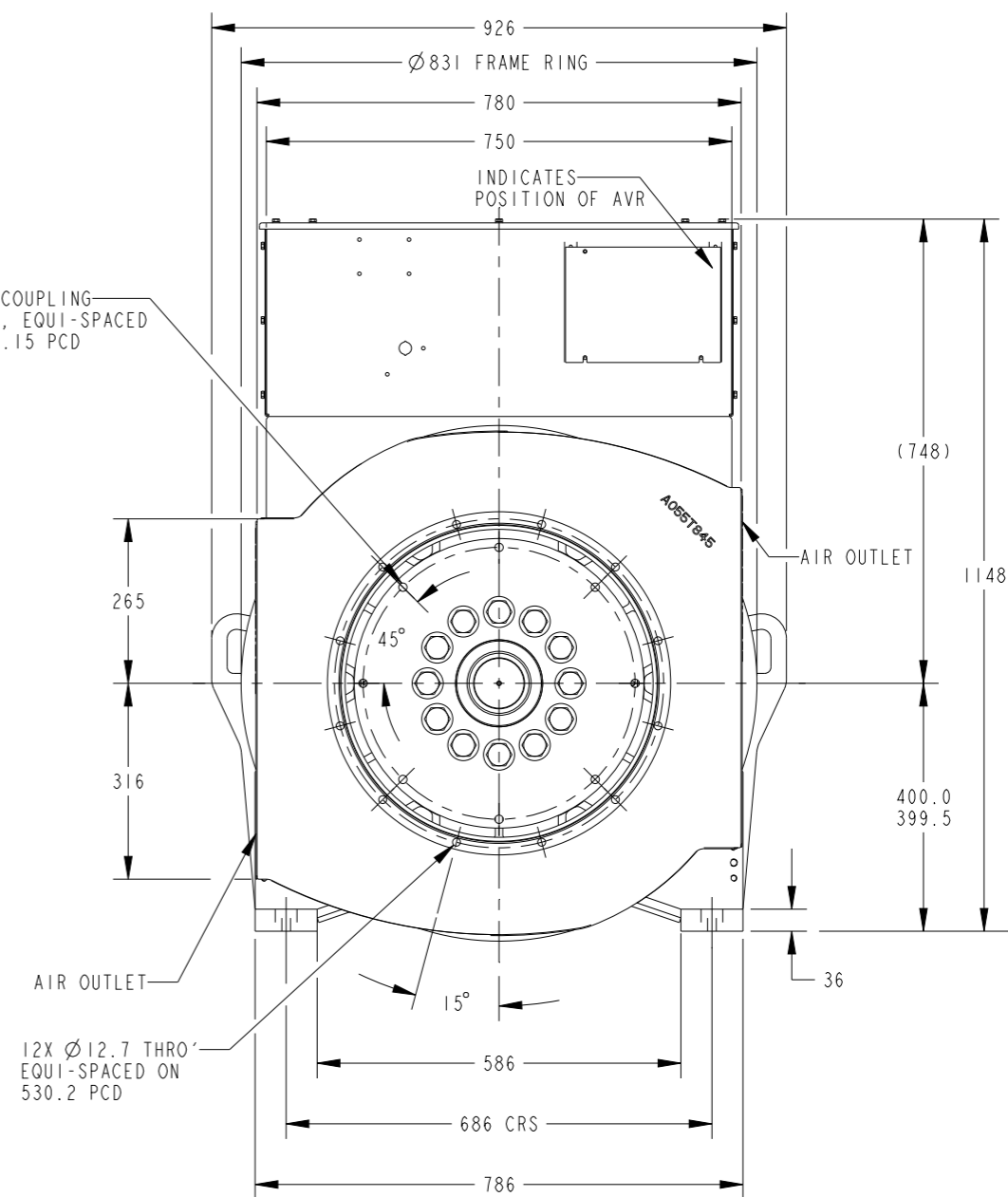
REL NO	REV	NO	REVISION	DWN	CKD	APVD	DATE
ECO-174327	B	1	UPDATED VIEWS PICTORIALY	KP	RH	I.SAUNDATTI	17JAN18
		2	ZONE D4,C OF G FOR CORE C 618 WAS 624, FOR CORE D 639 WAS 642	KP	RH	I.SAUNDATTI	17JAN18
		3	ZONE D4, DIM 1416 WAS 1414, DIM 580 WAS 595	KP	RH	I.SAUNDATTI	17JAN18
		4	ZONE D3, RMV DIM 599.5	KP	RH	I.SAUNDATTI	17JAN18
		5	ZONE B1, DIM 36 WAS 34	KP	RH	I.SAUNDATTI	17JAN18

NOTE:

I. CUSTOMER MUST ENSURE THAT AIR INLET AND OUTLET POSITIONS ARE NOT OBSTRUCTED



8X IN COUPLING
Ø 13.5, EQUI-SPACED
ON 438.15 PCD



UNLESS OTHERWISE SPECIFIED, ALL DIMENSIONS ARE IN MILLIMETERS	SIM TO	DWN K_PATIL		CUMMINS GENERATOR TECHNOLOGIES	
	DO NOT SCALE PRINT	CKD S_KARMARKAR		DRAWING, GENERAL ASSEMBLY	
SCALE 0.130		APVD I_SAUNDATTI	SITE CODE	S6LID-C/D, 1B SAE1-14, STD BOX	
THIS DOCUMENT (AND THE INFORMATION SHOWN THEREON) IS CONFIDENTIAL AND PROPRIETARY AND SHALL NOT BE DISCLOSED TO OTHERS IN HARD COPY OR ELECTRONIC FORM, REPRODUCED BY ANY MEANS, OR USED FOR ANY PURPOSE WITHOUT WRITTEN CONSENT OF CUMMINS INC.	DATE 08JUN17	FIRST USED ON S6	STA	DWG SIZE A2	A057K894
	FOR INTERPRETATION OF DIMENSIONING AND TOLERANCING, SEE ASME Y14.5-2009				CAD SHEET 1 of 1