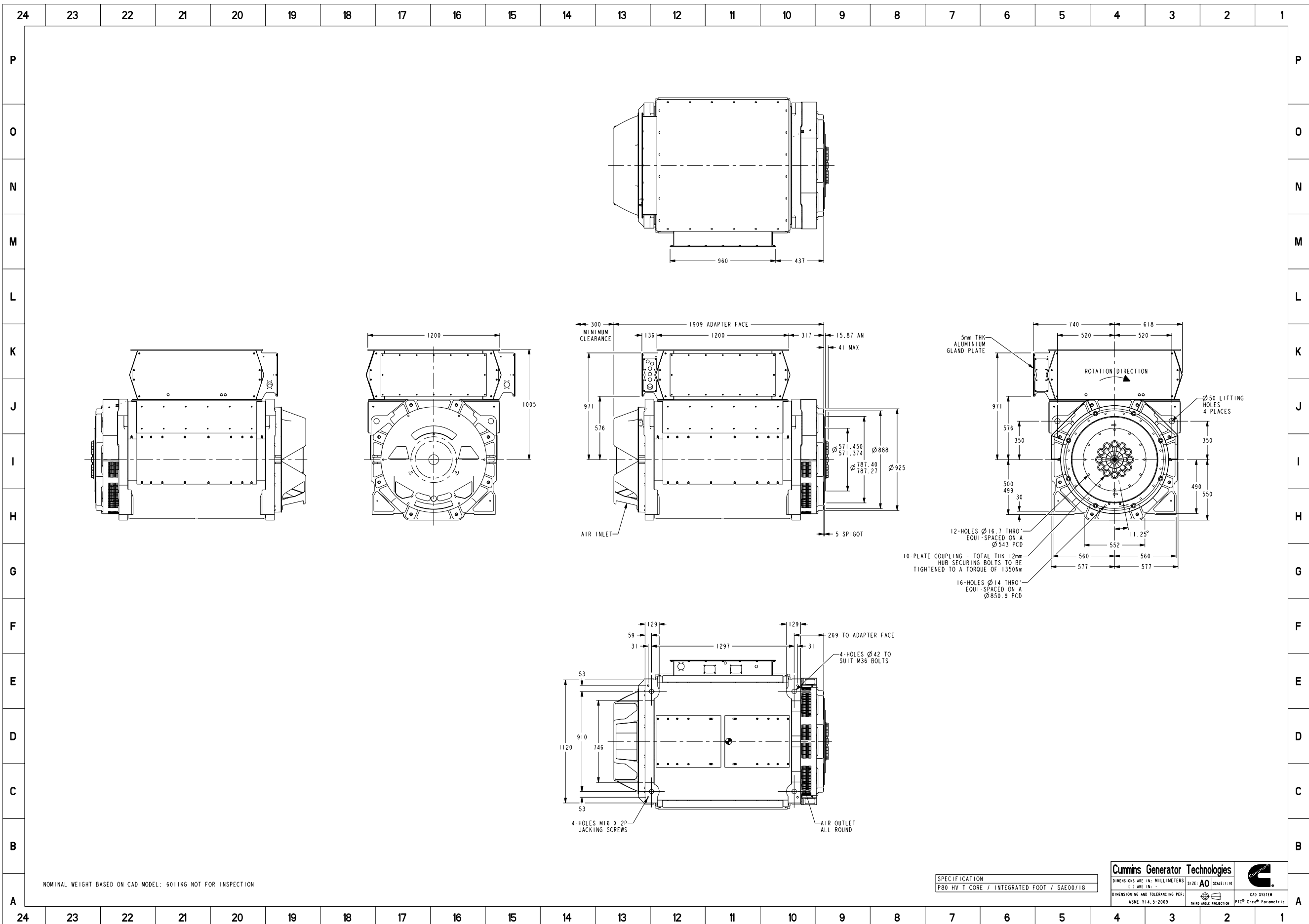


Document Generated: 16MAY2022 13:15 GMT

Cummins Data Classification:
Cummins Confidential

This document (and the information shown thereon) is **Confidential and Proprietary** and shall not be disclosed to others in hard copy or electronic form, reproduced by any means, or used for any purpose without written consent of Cummins Inc.

Part Number: **A044Z716** Part Revision: **B**
 Part Name: **ARRANGEMENT, GENERATOR GENERAL**
 Drawing Category: **Outline (Tabulation)** State: **Released** Sheet 1 of 3



Document Generated: 16MAY2022 13:15 GMT



Part Number: A044Z716

Change Notice	CN00060128	Alternates	
Manufacturer Part (MEP)	No	Usage	Production Only
Release Phase Code	Production (P)	Drawing Specification	Number: DSA044Z716
External Regulations	No External Regulation		Revision: B

3D image provided when available for visual reference only.

Drawing Revision Information

Description of Change(s)

Note: Change information is provided for reference only and does not supersede the drawing's primary content.

DRAWING - END BRACKETS, QUANTITY OF COUPLING DISC HOLES, WEIGHT, C OF G AND DRAWING BORDER UPDATED.

PART - NO CHANGE

Drawing Authorization

Drafter	Andrew Savill	Date	16MAY2022
Checker	Darren George Robert Lee	Date	16MAY2022
Approver	NO APPROVAL REQUIRED	Date	

Document Generated: 16MAY2022 13:15 GMT