

CREO PARAMETRIC

4

3

2

1

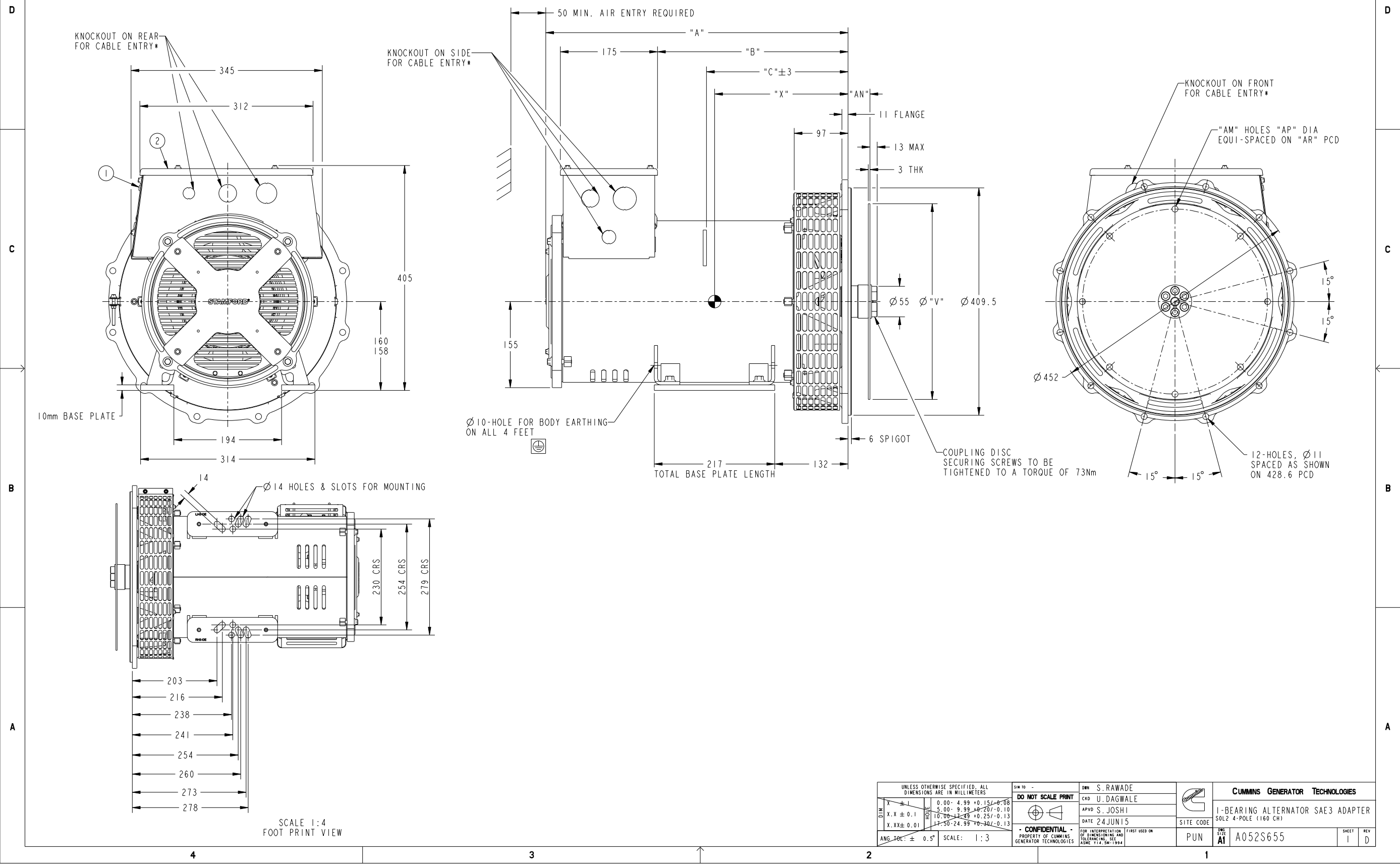
TABULATION						
FRAME	CURRENT ER	"A"	"B"	"C"	"X"	NETT WT (Kg)
SOL2-FI	ECO-163464	459.5	257	211	211	101
SOL2-GI	ECO-163464	459.5	257	211	211	107
SOL2-KI	ECO-163464	479.5	277	222	222	113
SOL2-MI	ECO-163464	494.5	292	230	230	124
SOL2-PI	ECO-163464	514.5	312	240	240	132
SOL2-UI	ECO-163464	544.5	342	255	255	141

COUPLING DISC					
SAE	"AN"	"AM"	"AP"	"AR"	"V"
10	53.8	8	11	295.3	314.2
11.5	39.6	8	11	333.4	352.3

REL NO	REV	DETAIL	DWN CKD	APVD	DATE
ECO-163464	D	PRODUCTION RELEASE	MMA UKD	S. JOSHI	26 JUL 16

ZONE D2; ADD ±3 ON "C" DIM

①-REMOVABLE COVER FOR ACCESS TO AVR  
 ②-REMOVABLE COVER FOR ACCESS TO MAIN TERMINALS  
 \* FOR KNOCKOUT DETAILS REFER TERMINAL BOX DRAWING



UNLESS OTHERWISE SPECIFIED, ALL DIMENSIONS ARE IN MILLIMETERS		SIN TO -		DWN S. RAWADE		<b>CUMMINS GENERATOR TECHNOLOGIES</b> 1-BEARING ALTERNATOR SAE3 ADAPTER SOL2 4-POLE (160 CH)
DO NOT SCALE PRINT		APVD S. JOSHI		DATE 24 JUN 15		
X.X ± 0.1 X.XX ± 0.01 ANG TOL: ± 0.5° SCALE: 1:3		0.00- 4.99 +0.15/-0.08 5.00- 9.99 ±0.20/-0.10 10.00-24.99 ±0.25/-0.13 25.00-99.99 ±0.30/-0.13		- CONFIDENTIAL - PROPERTY OF CUMMINS GENERATOR TECHNOLOGIES		SITE CODE PUN
FIRST USED ON		ASME Y14.5M-1994		SHEET 1		REV D A052S655