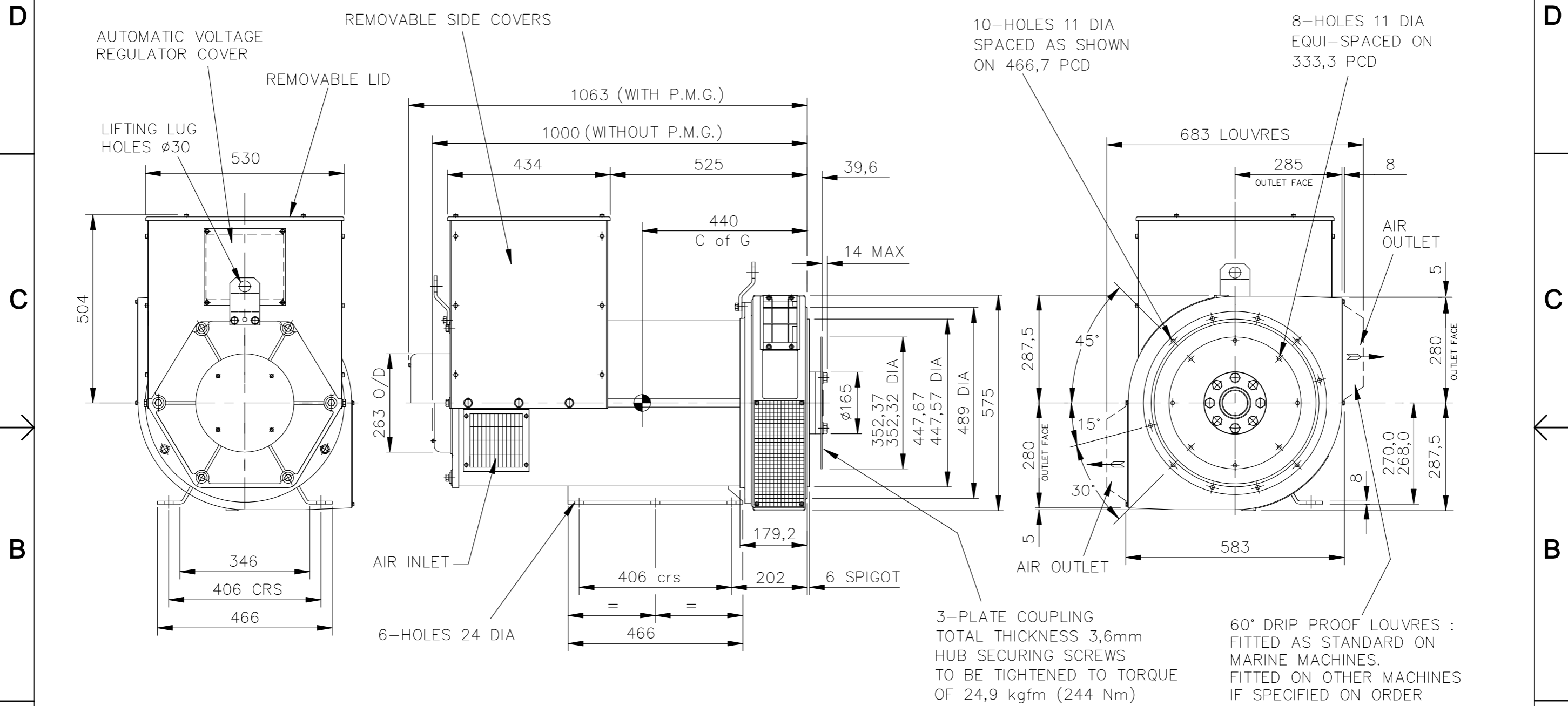


| REL NO     | REV | DETAILS  | DWN | CKD | APVD | DATE    |
|------------|-----|--|-----|-----|------|---------|
| ECO-153076 | G   | CORRECTED THE NOTE DESCRIBING DRIP PROOF LOUVRES | SS  | TC  | SPA  | 23NOV15 |



APPROX NETT WEIGHT = 720 kg

CUSTOMER MUST ENSURE THAT AIR INLET AND OUTLET POSITIONS ARE NOT OBSTRUCTED.

|  |              |           |                                       |                             |
|--|--------------|-----------|---------------------------------------|-----------------------------|
| UNLESS SPECIFIED ALL DIMENSIONS ARE IN MILLIMETERS |              |           | <b>CUMMINS GENERATOR TECHNOLOGIES</b> |                             |
| <b>DO NOT SCALE PRINT</b>                          | DRAWN DW     |           | DRAWING, GENERAL ASSEMBLY             |                             |
|  | CHECKED ---  | SITE CODE | UCD27J/K - SAE2 ADAPTOR               |                             |
|  | APPROVED --- |           | DATE 15FEB96                          | SAE11.5 COUPLING - STD FEET |
| <b>CONFIDENTIAL</b>                                | DATE 15FEB96 | STA       | DWG SIZE                              | SHEET 1                     |
| PROPERTY OF CUMMINS<br>GENERATOR TECHNOLOGIES      | SCALE 1:10   |           | FIRST USED ON UCD27J                  |                             |
|  |              |           | REV G                                 |                             |