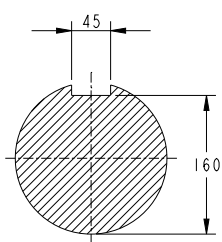
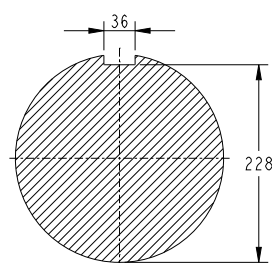


NOTES:

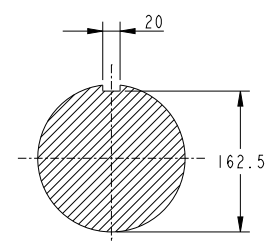
1. SHAFT STIFFNESS:
THE STIFFNESS OF THE SHAFT BETWEEN THE MAIN ROTOR CORE ϕ
AND SHAFT EXTENSION ϕ IS 140.06×10^6 kgcm/radian
(STIFFENING EFFECT OF MAIN ROTOR CORE IS NOT INCLUDED IN THIS FIGURE).
2. SHAFT PROPERTIES:
MINIMUM YIELD : 260MPa
MINIMUM ULTIMATE TENSILE STRENGTH : 530MPa
SHAFT MATERIAL IS APPROVED BY MARINE AUTHORITIES WHEN APPROPRIATE.
3. MAXIMUM RECOMMENDED VIBRATORY STRESS LEVEL IN THE SHAFT IS 34.47×10^6 N/m²
FOR SPEED RANGE OF 0.95 TO 1.1 X NOMINAL SPEED AND 68.94×10^6 N/m² FOR
RUN THROUGH CONDITIONS, FOR INDUSTRIAL MACHINES.
4. FOR MARINE AUTHORITIES, THEIR APPROPRIATE RULES WILL APPLY.
5. CUMMINS GENERATOR TECHNOLOGIES LTD SHOULD BE NOTIFIED OF ANY ROTORS NOT COMPLYING
WITH THESE RULES. CUMMINS GENERATOR TECHNOLOGIES LTD BALANCE ROTORS TO COMPLY WITH
INTERNATIONAL STD ISO 1940 GRADE 2.5 AND BS 6861 PART 1 GRADE 2.5.
6. FOR UNBALANCED MAGNETIC PULL (U.M.P) FORCES PLEASE
CONTACT CUMMINS GENERATOR TECHNOLOGIES LTD.



SECTION A-A



SECTION B-B



SECTION C-C

CONVERSION FACTORS		
TO CONVERT	TO	DIVIDE BY
kg	lb	0.453592
kg m ²	lb ft ²	0.04214
kgcm/rad	lbin/rad	1.1521246
N/m ²	lbf/in ²	6894.76

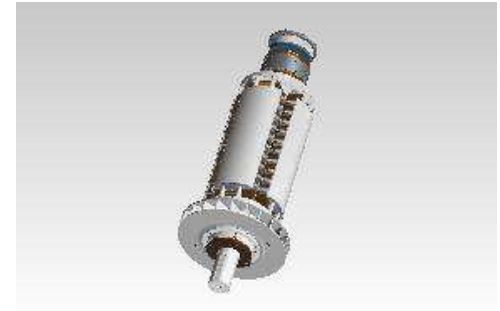
COMPONENT	Wt Kg	WR ² Kg m ²
1 SHAFT	694.337	4.3510
2 MAIN ROTOR	2054.934	118.7815
3 FAN AND HUB	79.920	4.8111
3 EXCITER	94.000	2.1000
4 P. MAG ROTOR	6.970	0.0190
5 STUB SHAFT	0.929	0.0003
TOTAL	2931.090	130.0629

Cummins Generator Technologies		
DIMENSIONS ARE IN: MILLIMETERS	SIZE: A1 SCALE: 0.275	
DRAWING SPECIFICATION DESCRIPTION		CAD SYSTEM PTC® Creo® Parametric
S9LV, G-CORE, 4P, 2 BRG		
DIMENSIONING AND TOLERANCING PER: ASME Y14.5-2009		THIRD ANGLE PROJECTION



Part Number: A068N491

Change Notice	CN00115535	Alternates	
Manufacturer Part (MEP)	No	Usage	Production Only
Release Phase Code	Production (P)	Drawing Specification	Number: DS47099557
External Regulations	No External Regulation		Revision: C



3D image provided when available for visual reference only.

Drawing Revision Information

<p>Description of Change(s) Note: Change information is provided for reference only and does not supersede the drawing's primary content.</p> <p>SEE CHANGE NOTICE.</p> <p>PRODUCTION RELEASE</p>

Drawing Authorization

Drafter	Pratik Vijay Patil	Date	20NOV2023
Checker	Sneha Pundlikrao Bondlewad	Date	23NOV2023
Approver	Matthew Hammond	Date	23NOV2023

Document Generated: 24NOV2023 09:26 GMT