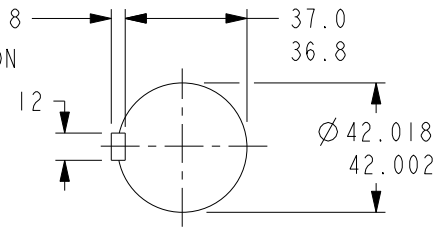


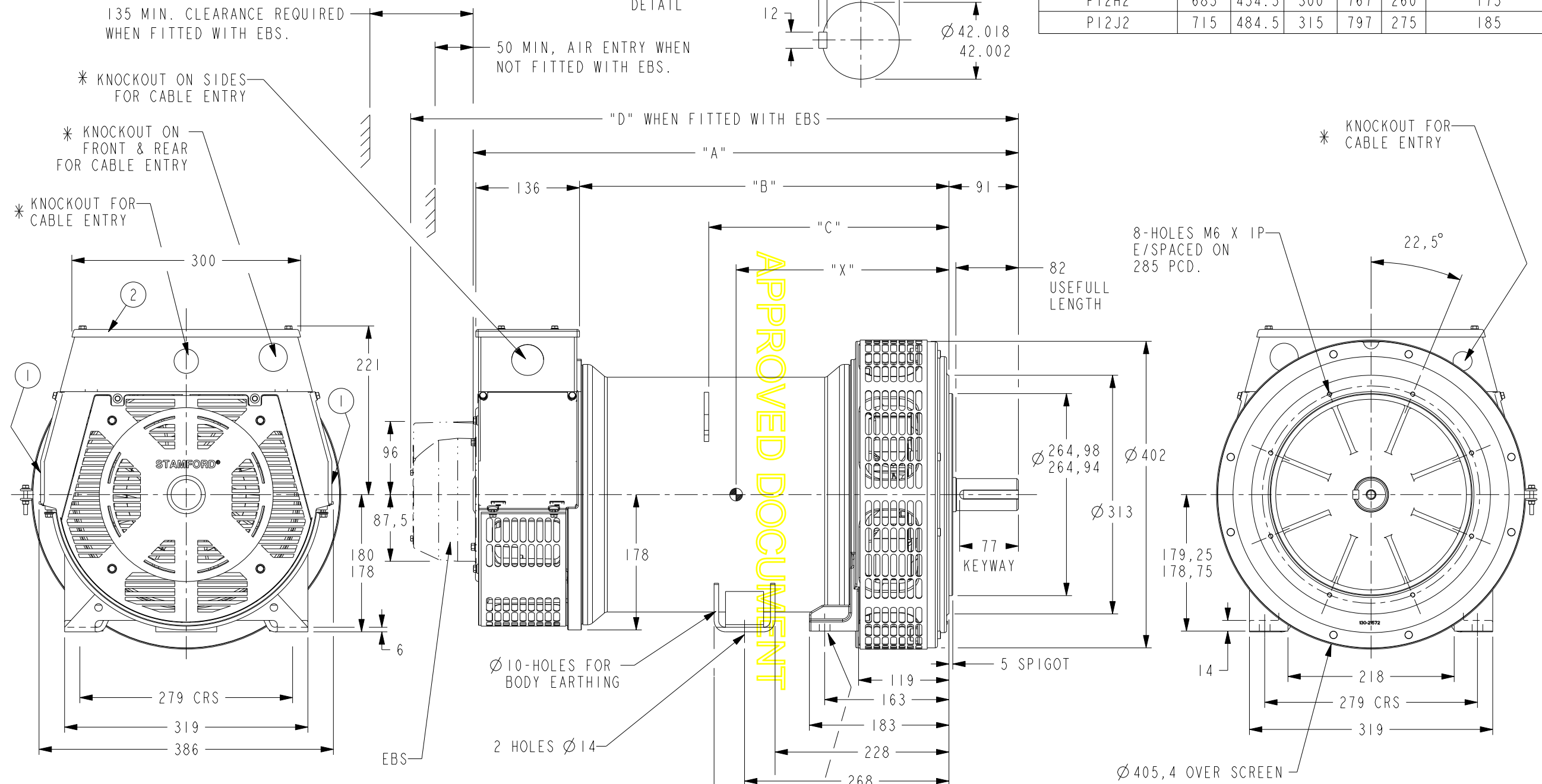
DRG. SIZE C	REL. PHASE P	PART No 19-1173	ISSUE A
----------------	-----------------	--------------------	------------

IF IN DOUBT-ASK
DO NOT SCALE

SHAFT EXTENSION
DETAIL



DIMENSIONS						
FRAME	"A"	"B"	"C"	"D"	"X"	NETT WT. (Kg)
PI2H2	685	454.5	300	767	260	175
PI2J2	715	484.5	315	797	275	185



APPROVED DOCUMENT

- ① -REMOVABLE COVER FOR ACCESS TO ELECTRONIC CONTROL
- ② -REMOVABLE COVER FOR ACCESS TO MAIN TERMINALS
- * FOR KNOCKOUT DETAILS REFER TERMINAL BOX DRAWING

CONFIDENTIAL		PROPERTY OF CUMMINS GENERATOR TECHNOLOGIES LTD.		PI H/J 2-POLE 2-BEARING ALTERNATOR STANDARD TERMINAL BOX	
DIMENSIONS IN MILLIMETRES (MM) AT 20°C		PROJECTION 		DRG. SIZE C	SCALE 3:10
UNLIMITED DIMS ± --		DRAWN DW	21/5/10	REL. PHASE P	PART No 19-1173
		CHECKED DW	21/5/10	ISSUE A	
		APPROVED DPC	21/5/10	PRO/ENGINEER	SHEET 1 OF 1 SHEETS

5-0223-58	A	DW	21/5/10	ORIGINAL ISSUE
MOD.	ISSUE	DRAWN	DATE	MODIFICATION