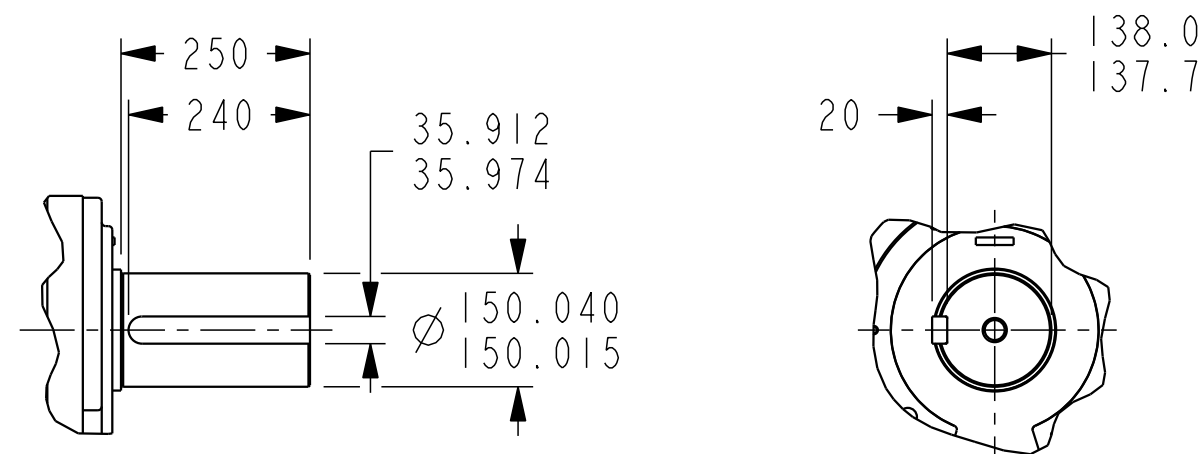
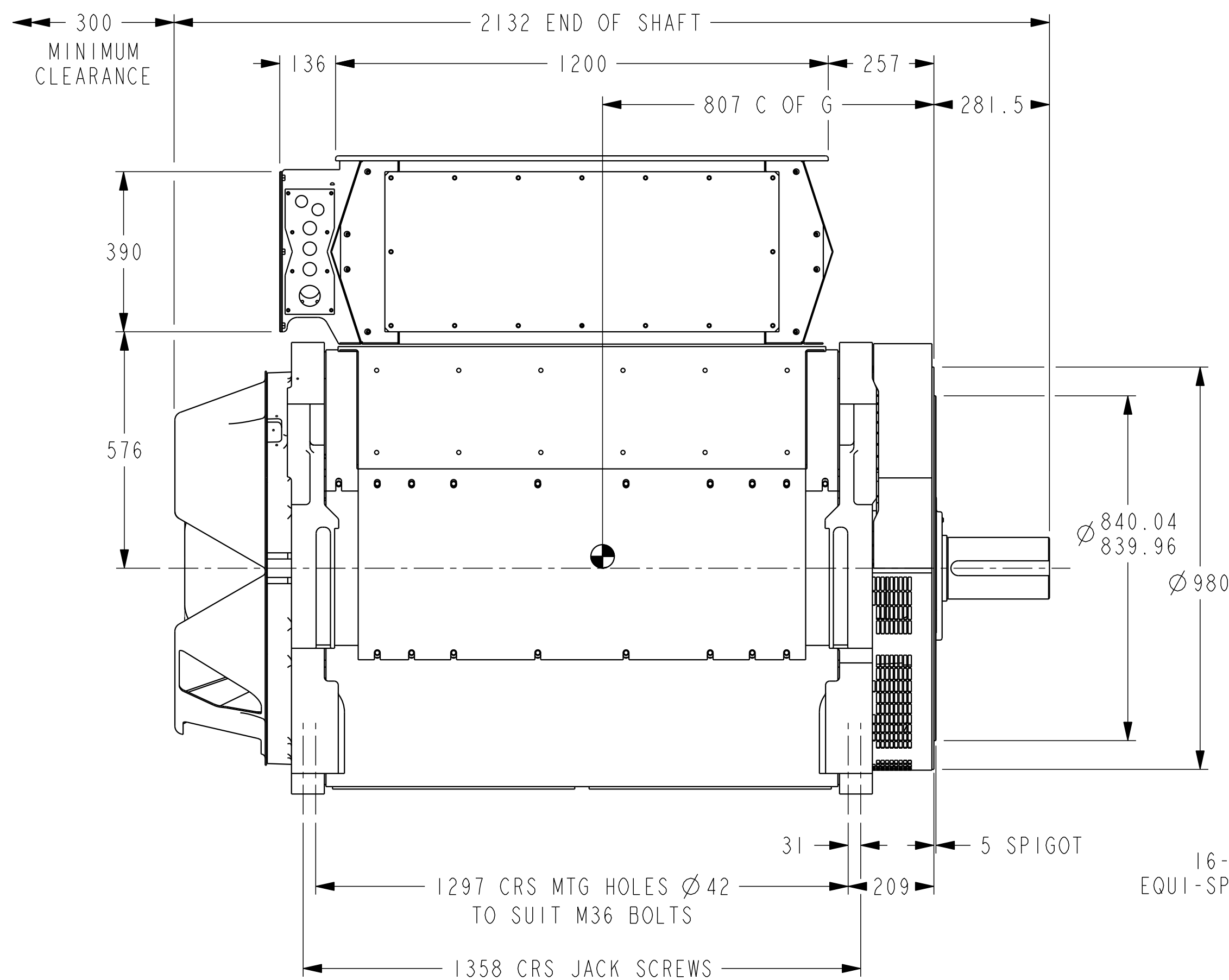


REL NO	REV	NO	REVISION	DWN	CKD	APVD	DATE
ECO-167527	B	1	DRAWING BORDER AND DIMENSIONING SCHEME UPDATED	AS	AS	D.LEE	23JAN17

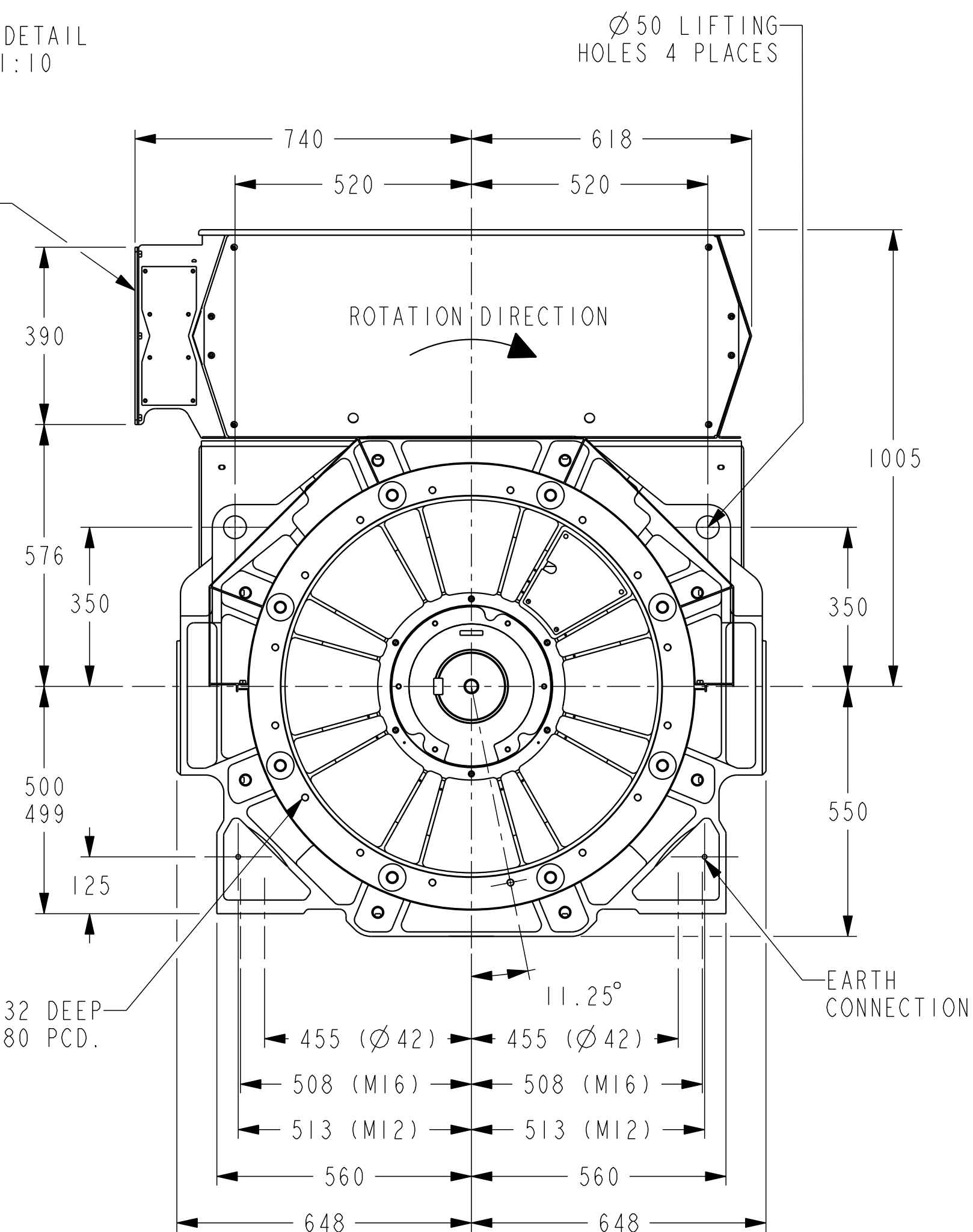


2 BEARING DETAIL  
SCALE 1:10



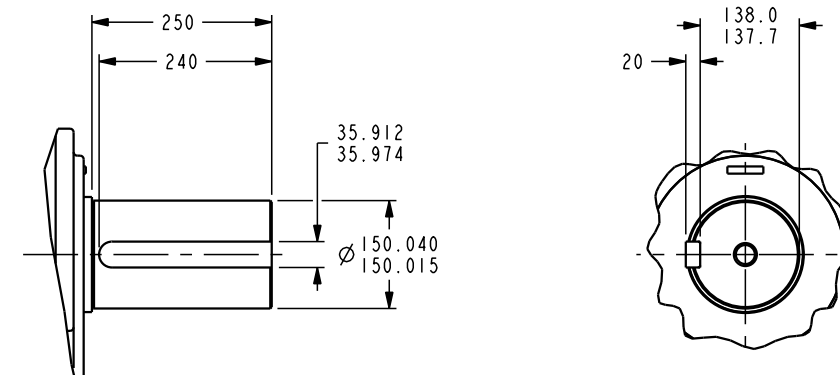
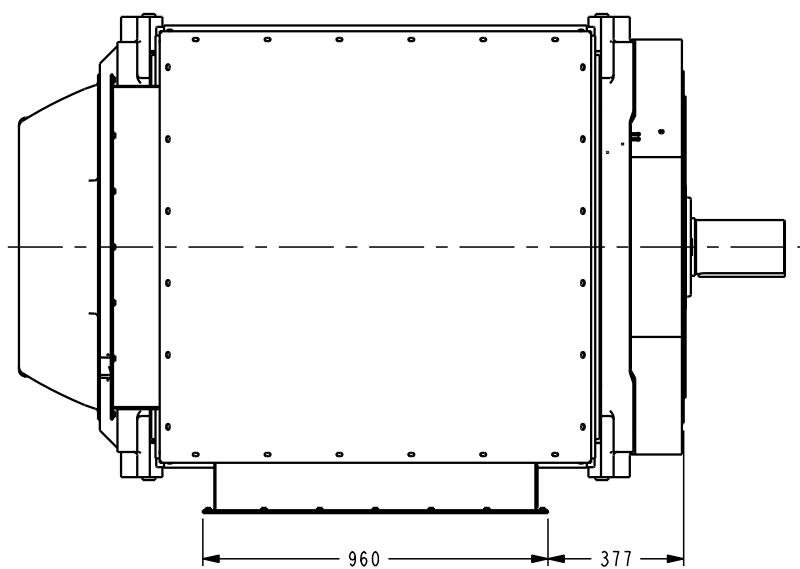
5mm THK  
ALUMINIUM  
GLAND PLATE

16-HOLES M16 X 32 DEEP  
EQUI-SPACED ON AN 880 PCD.

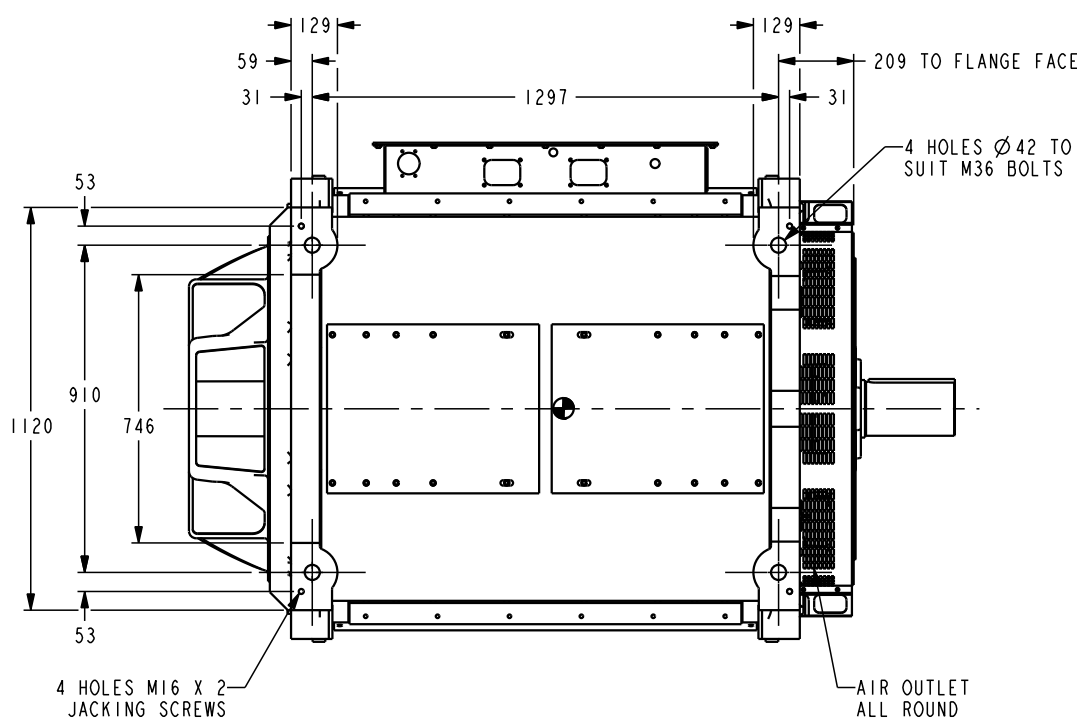
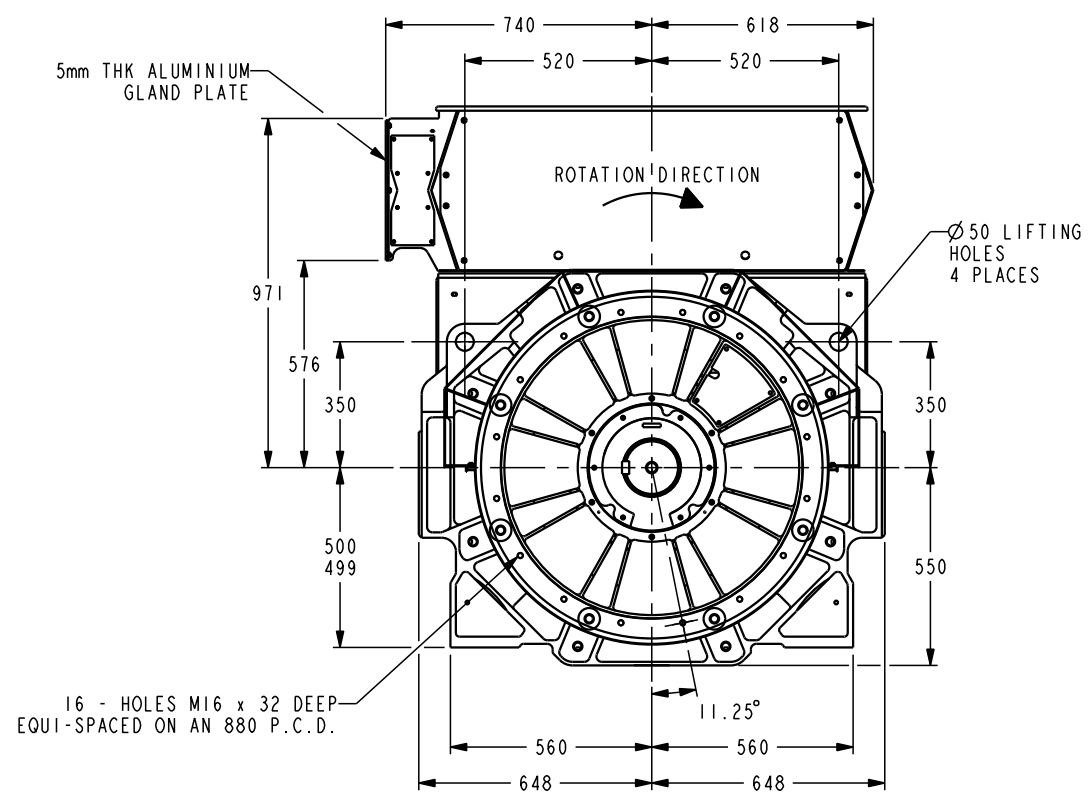
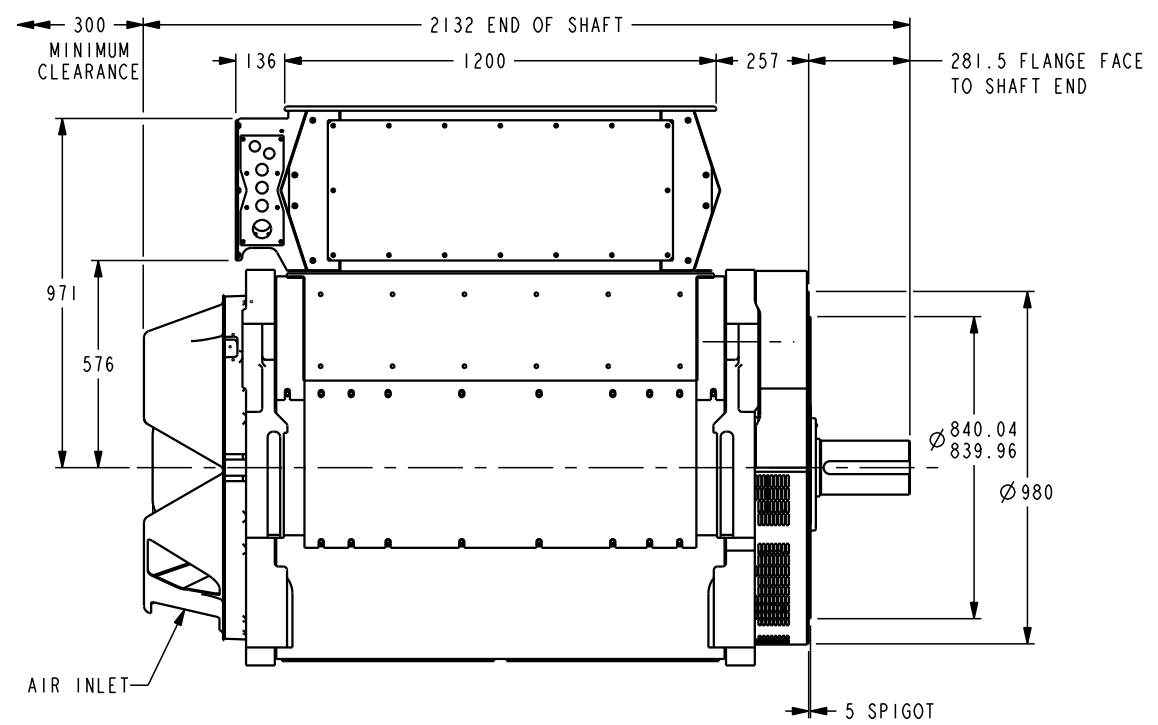
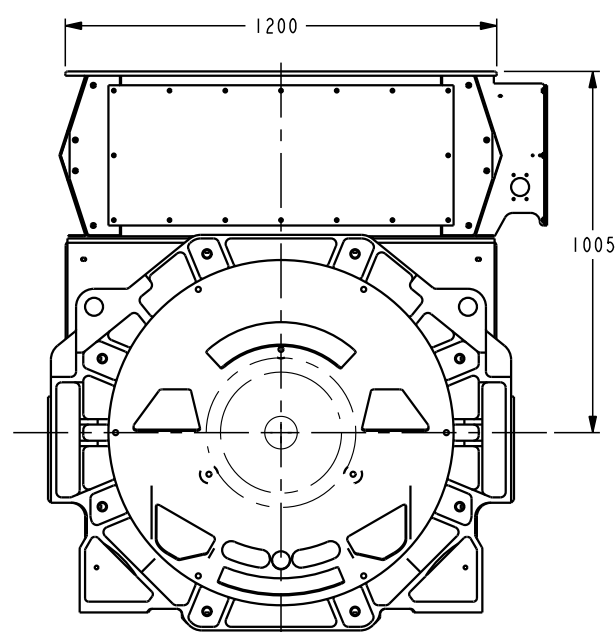
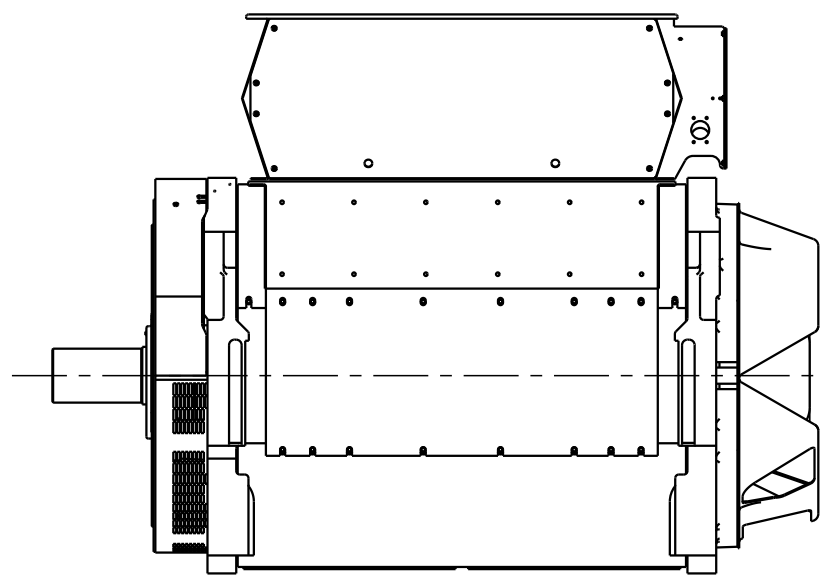


NOMINAL WEIGHT BASED ON CAD MODEL 6058KG; NOT FOR INSPECTION

UNLESS OTHERWISE SPECIFIED, ALL DIMENSIONS ARE IN MILLIMETERS SCALE 1:10	SIM TO	DWN I. MUGHAL		CUMMINS GENERATOR TECHNOLOGIES	
	DO NOT SCALE PRINT	CKD I. MUGHAL		DRAWING, GENERAL ASSEMBLY	
THIS DOCUMENT (AND THE INFORMATION SHOWN THEREON) IS CONFIDENTIAL AND PROPRIETARY AND SHALL NOT BE DISCLOSED TO OTHERS IN HARD COPY OR ELECTRONIC FORM, REPRODUCED BY ANY MEANS, OR USED FOR ANY PURPOSE WITHOUT WRITTEN CONSENT OF CUMMINS INC.		APVD R. MACMENEMEY	SITE CODE	P80 MV T CORE / INTEGRATED FOOT	
		DATE 11SEP07		FOR INTERPRETATION OF DIMENSIONING AND TOLERANCING, SEE ASME Y14.5-2009	FIRST USED ON
		STA		80-2402	



**2 BEARING SHAFT DETAIL**  
SCALE 1:5



NOMINAL WEIGHT BASED ON CAD MODEL 6058KG; NOT FOR INSPECTION

UNLESS OTHERWISE SPECIFIED, ALL DIMENSIONS ARE IN MILLIMETERS	DO NOT SCALE PRINT	SCALE 1:10	DATE 11 SEP 07	APP'D. R. MACNEMEMY	SITE CODE	STA	80-2402	CUMMINS GENERATOR TECHNOLOGIES	DRAWING, GENERAL ASSEMBLY	P80 MV 1 CORE / INTEGRATED FOOT	CAD SHEET 2 of 2
---	--------------------	------------	----------------	---------------------	-----------	-----	---------	--------------------------------	---------------------------	---------------------------------	------------------