

AutoCad

4

3

2

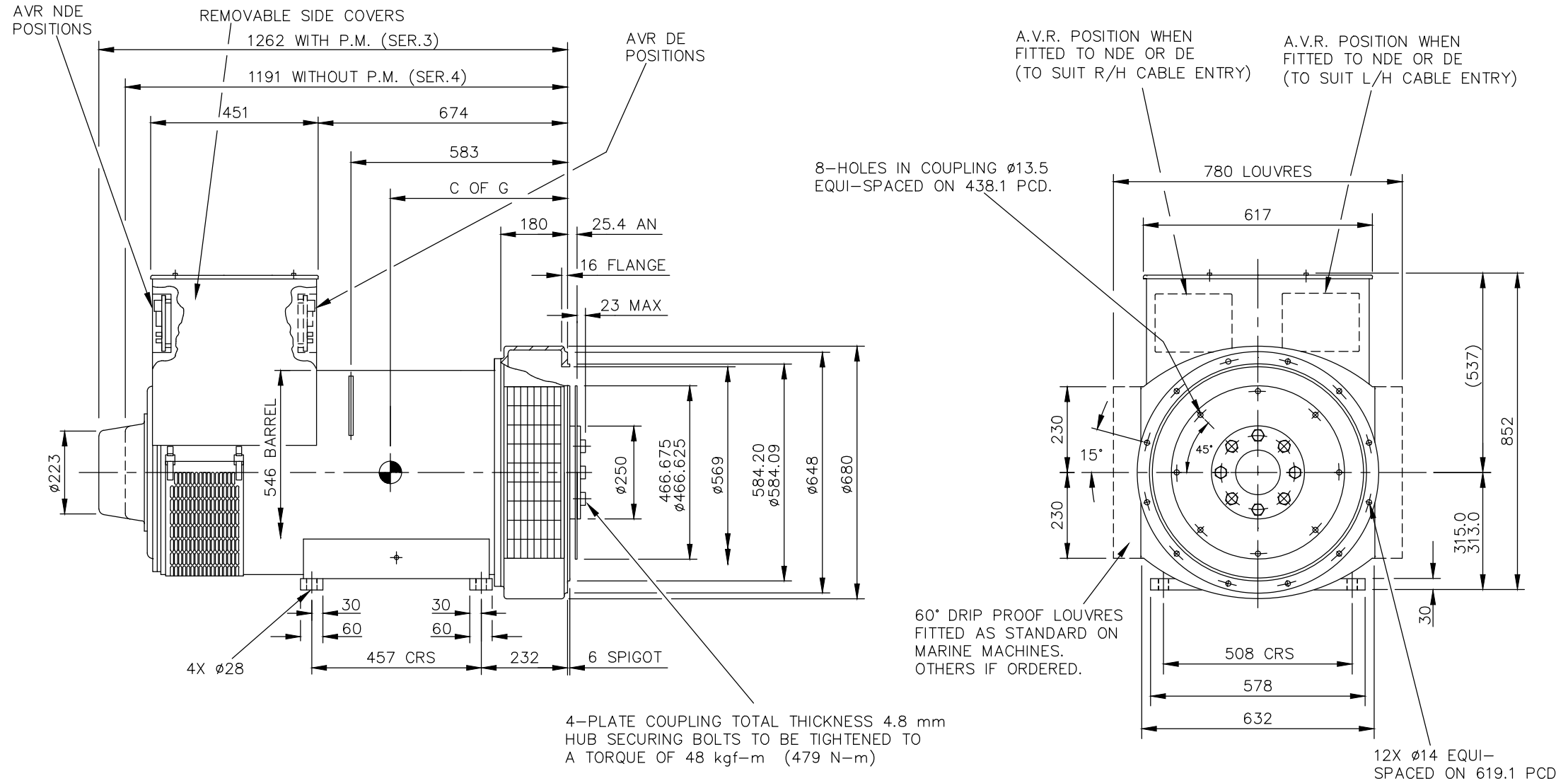
1

CORE	C OF G (mm)	WEIGHT(KG)
F	530	1160

REL NO	REV	NO	REVISION	DWN	CKD	APVD	DATE
ECO-171701	B	1	ZONE D4, ADDED WEIGHT (1160KG) FOR F CORE	SA	PN	S_NARAYANAN	04SEP17
		2	IN TITLE BLOCK DESCRIPTION S4L1S WAS S4	SA	PN	S_NARAYANAN	04SEP17

NOTE: -

- CUSTOMER MAY CUT CABLE ENTRY HOLES AS REQUIRED IN ANY OF THE FOUR TERMINAL BOX SIDES SUBJECT TO POSITION OF A.V.R, TERMINALS ETC.



D

D

C

C

B

B

A

A

4

3

2

1

UNLESS OTHERWISE SPECIFIED, ALL DIMENSIONS ARE IN MILLIMETERS

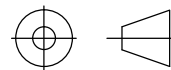
SIM TO 41-4543

DRAWN S_BALAMURUGAN

DO NOT SCALE PRINT

CHECKED A_BIRARI

SCALE 1:10



APPROVED B_SURVE

DATE 30JAN17

THIS DOCUMENT (AND THE INFORMATION SHOWN THEREON) IS CONFIDENTIAL AND PROPRIETARY AND SHALL NOT BE DISCLOSED TO OTHERS IN HARD COPY OR ELECTRONIC FORM, REPRODUCED BY ANY MEANS, OR USED FOR ANY PURPOSE WITHOUT WRITTEN CONSENT OF CUMMINS INC.

FOR INTERPRETATION OF DIMENSIONING AND TOLERANCING, SEE ASME Y14.5-2009

FIRST USED ON S4



CUMMINS GENERATOR TECHNOLOGIES

DRAWING, GENERAL ASSEMBLY

S4L1S F 1-BRG SAE 0.5/14 STD T/BOX

SITE CODE

STA

DWG SIZE A4

A057B581

CAD SHEET 1 of 1