

AutoCad

4

3

2

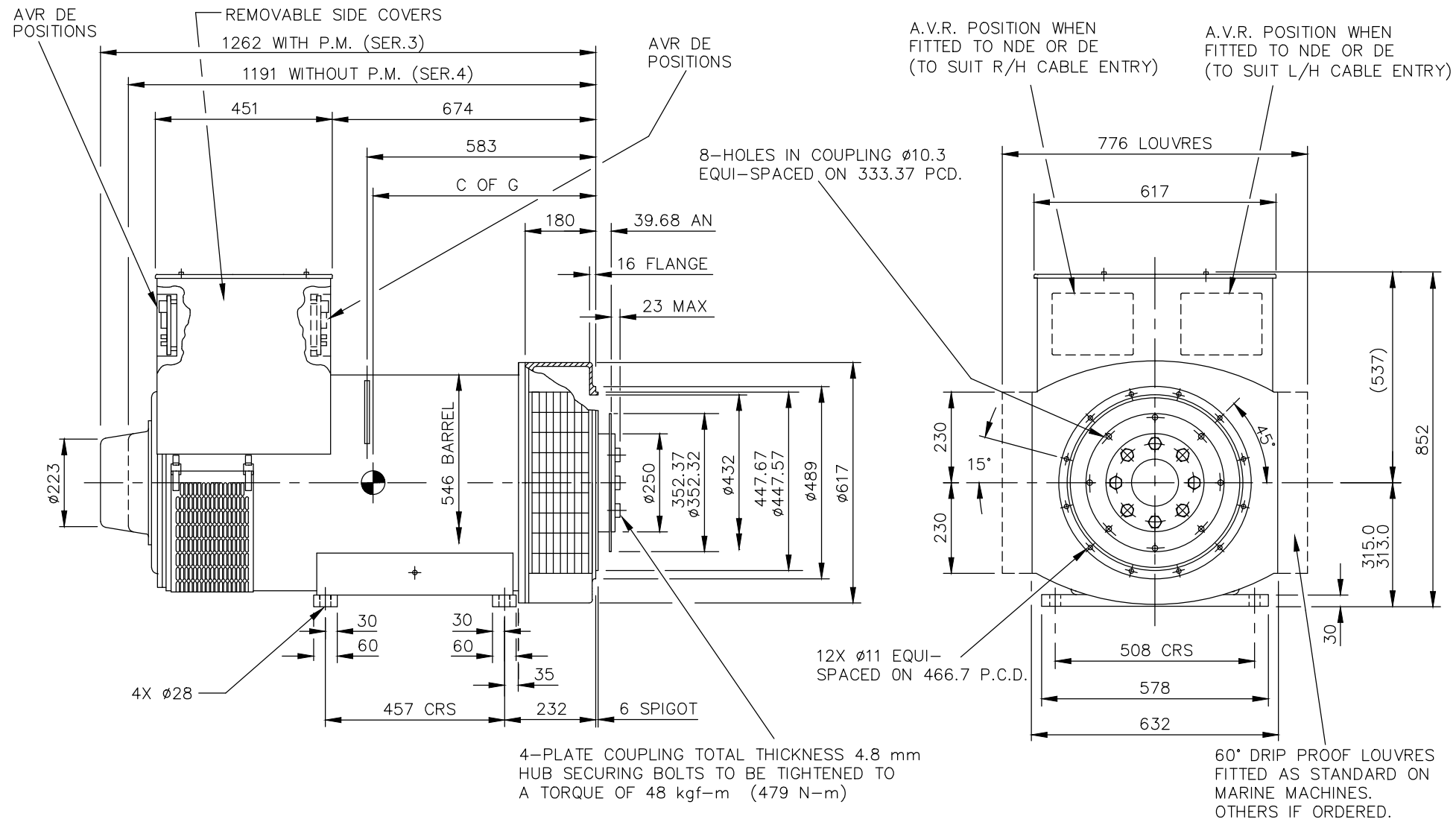
1

CORE	C OF G (mm)	WEIGHT(KG)
F	530	1160

REL NO	REV	NO	REVISION	DWN	CKD	APVD	DATE
ECO-171793	B	1	ZONE D4, ADDED WEIGHT (1160KG) FOR F CORE	SA	PN	S_NARAYANAN	15SEP17
		2	IN TITLE BLOCK, DESCRIPTION S4L1S WAS S4	SA	PN	S_NARAYANAN	15SEP17

NOTE: -

- CUSTOMER MAY CUT CABLE ENTRY HOLES AS REQUIRED IN ANY OF THE FOUR TERMINAL BOX SIDES SUBJECT TO POSITION OF A.V.R, TERMINALS ETC.



UNLESS OTHERWISE SPECIFIED, ALL DIMENSIONS ARE IN MILLIMETERS

SIM TO 41-4563

DRAWN S_BALAMURUGAN

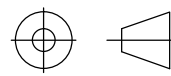
DO NOT SCALE PRINT

CHECKED A_BIRARI



CUMMINS GENERATOR TECHNOLOGIES

SCALE 1:10



APPROVED B_SURVE

DRAWING, GENERAL ASSEMBLY

DATE 31JAN17

SITE CODE

S4L1S F 1-BRG SAE2/11.5, STD T/BOX

THIS DOCUMENT (AND THE INFORMATION SHOWN THEREON) IS CONFIDENTIAL AND PROPRIETARY AND SHALL NOT BE DISCLOSED TO OTHERS IN HARD COPY OR ELECTRONIC FORM, REPRODUCED BY ANY MEANS, OR USED FOR ANY PURPOSE WITHOUT WRITTEN CONSENT OF CUMMINS INC.

FOR INTERPRETATION OF DIMENSIONING AND TOLERANCING, SEE ASME Y14.5-2009

FIRST USED ON

S4

STA

DWG SIZE A4

A057B593

CAD SHEET 1 of 1

4

3

2

1

A

A