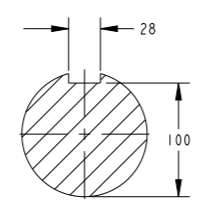
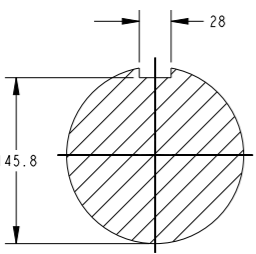
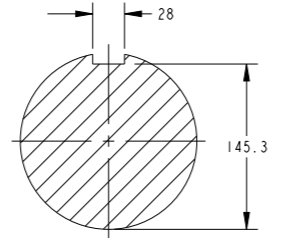
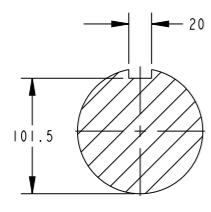
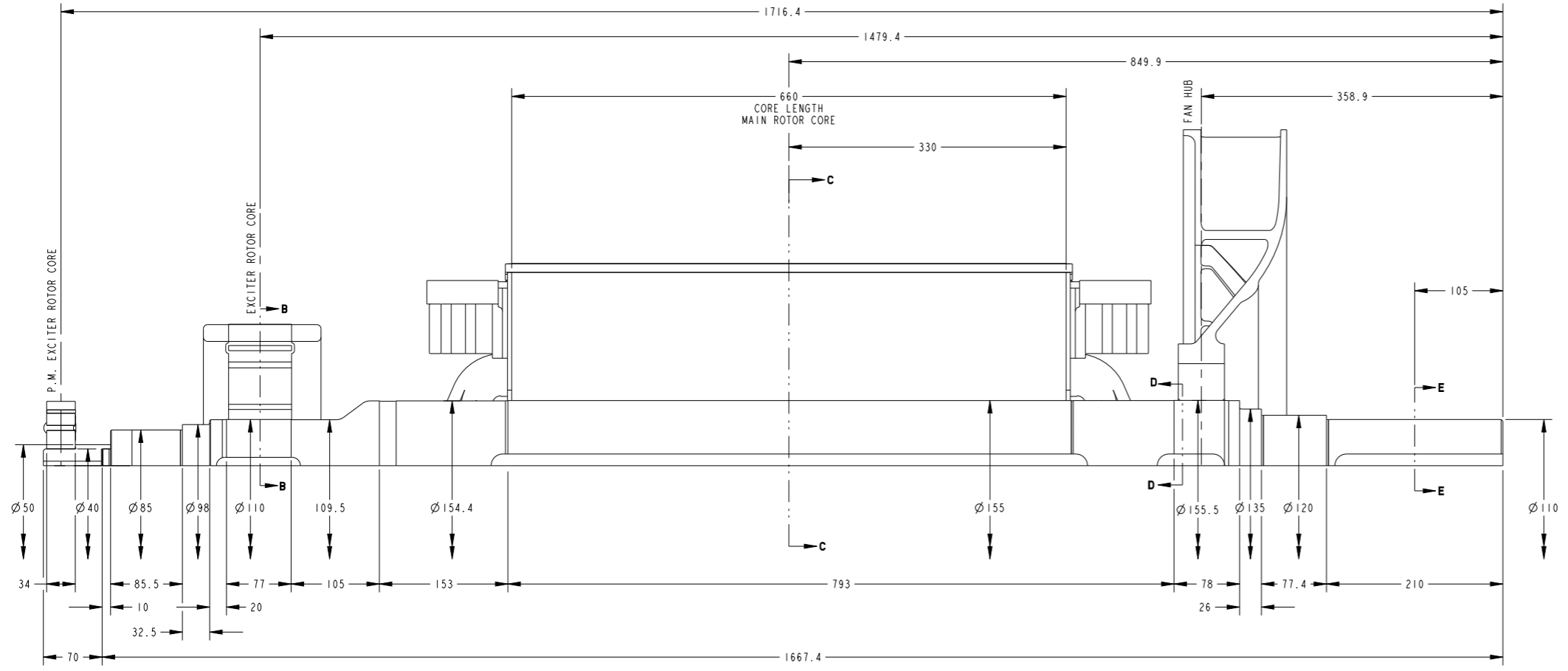


| | | | | | | | |
|------------|-----|----|-------------------------|-----|-----|-------------|---------|
| REL NO | REV | NO | REVISION | DWN | CKD | APVD | DATE |
| ECO-172756 | A | 1 | RELEASED FOR PRODUCTION | KP | SK | I.SAUNDATTI | 06OCT17 |

NOTES:

- SHAFT STIFFNESS:-
THE STIFFNESS OF THE SHAFT BETWEEN THE MAIN ROTOR CORE ϕ AND THE SHAFT EXTENSION ϕ IS 38.4×10^8 KGCM/RADIAN (STIFFENING EFFECT OF MAIN ROTOR CORE IS NOT INCLUDED IN THIS FIGURE)
- SHAFT MATERIAL :-
STEEL - C40E TO BSEN 10083-2 2006 (APPROVED BY MARINE AUTHORITIES WHEN APPROPRIATE) MAXIMUM RECOMMENDED VIBRATORY STRESS LEVEL IN THE SHAFT IS 34.47×10^8 N/m² FOR SPEED RANGE OF 0.95 TO 1.1 X NOMINAL SPEED AND 68.94×10^8 N/m² FOR RUN THROUGH CONDITIONS, FOR INDUSTRIAL MACHINES. FOR MARINE AUTHORITIES, THEIR APPROPRIATE RULES WILL APPLY
- CUMMINS GENERATOR TECHNOLOGIES LTD SHOULD BE NOTIFIED OF ANY ROTORS NOT COMPLYING WITH THESE RULES. CUMMINS GENERATOR TECHNOLOGIES LTD BALANCE ROTORS TO COMPLY WITH INTERNATIONAL STD BS ISO 1940 PARTS 1 AND 2. BALANCE GRADE 2.5
- FOR UNBALANCED MAGNETIC PULL (U.M.P.) REFER TO THE FACTORY



| COMPONENT | Wt Kg | WR ² (KGM ²) |
|--------------------|---------|-------------------------------------|
| EX. ROTOR | 44.02 | 0.6644 |
| MAIN ROTOR | 790 | 24.458 |
| FAN | 35.98 | 2.3407 |
| SHAFT | 197.77 | 0.5257 |
| P.M. EXCITER ROTOR | 4 | 0.011 |
| P.M. STUB SHAFT | 0.859 | 0.0003 |
| TOTAL | 1072.63 | 28.00 |

| CONVERSION FACTORS | | |
|--------------------|---------------------|-----------|
| TO CONVERT | TO | DIVIDE BY |
| kg | lb | 0.453592 |
| kg m ² | lb ft ² | 0.04214 |
| kgcm/rad | lbin/rad | 1.1521246 |
| N/m ² | lbf/in ² | 6894.76 |

UNLESS OTHERWISE SPECIFIED, ALL DIMENSIONS ARE IN MILLIMETERS

SCALE: 0.320

DO NOT SCALE PRINT

THIS DOCUMENT (AND THE INFORMATION SHOWN THEREON) IS CONFIDENTIAL AND PROPRIETARY AND SHALL NOT BE DISCLOSED TO OTHERS IN HARD COPY OR ELECTRONIC FORM, REPRODUCED BY ANY MEANS, OR USED FOR ANY PURPOSE WITHOUT WRITTEN CONSENT OF CUMMINS INC.

ASME Y14.5-2009

| | | | |
|------------------|------------------|--|---|
| SIN TO | DWN K_PATIL | | CUMMINS GENERATOR TECHNOLOGIES DRAWING, TORSIONAL S6L1D-H, 2-BRG, 4-POLE |
| CKD S_KARMARKAR | APVD I_SAUNDATTI | | |
| DATE 06OCT17 | SITE CODE | | |
| FIRST USED ON S6 | DWG SIZE A1 | | |

STA A058H238 CAD SHEET 1 of 1