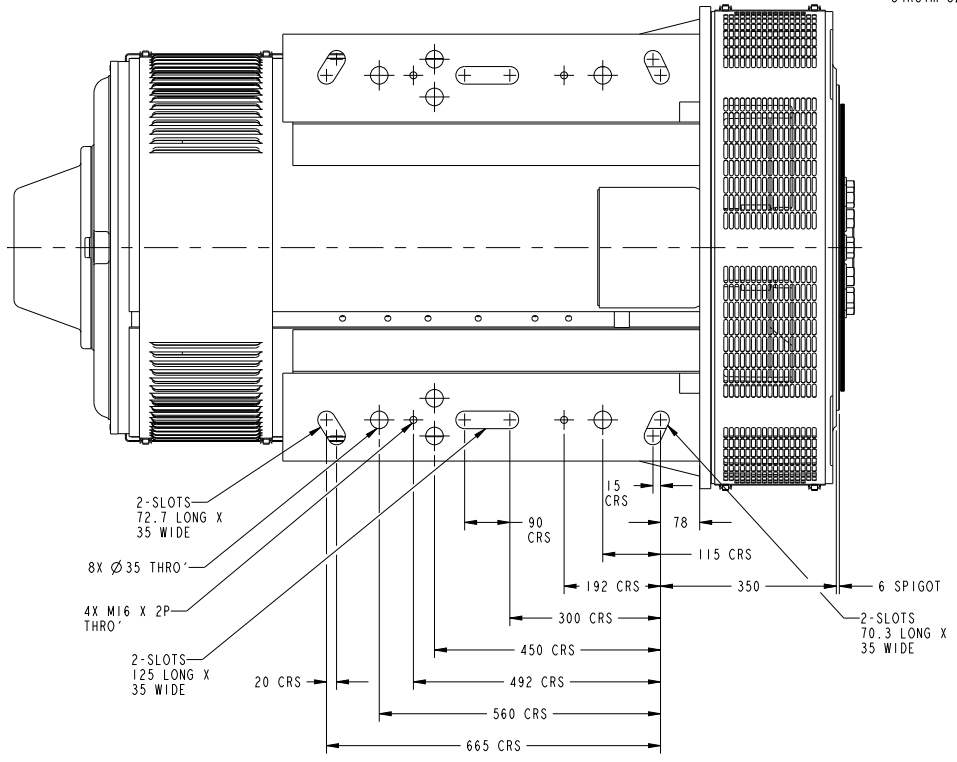
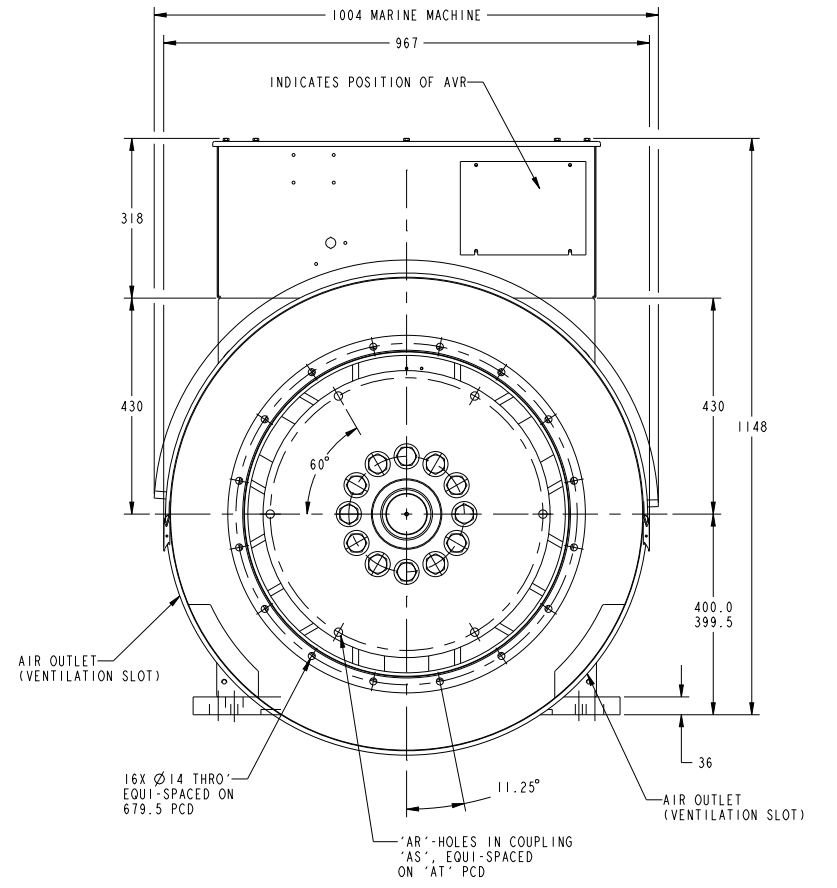
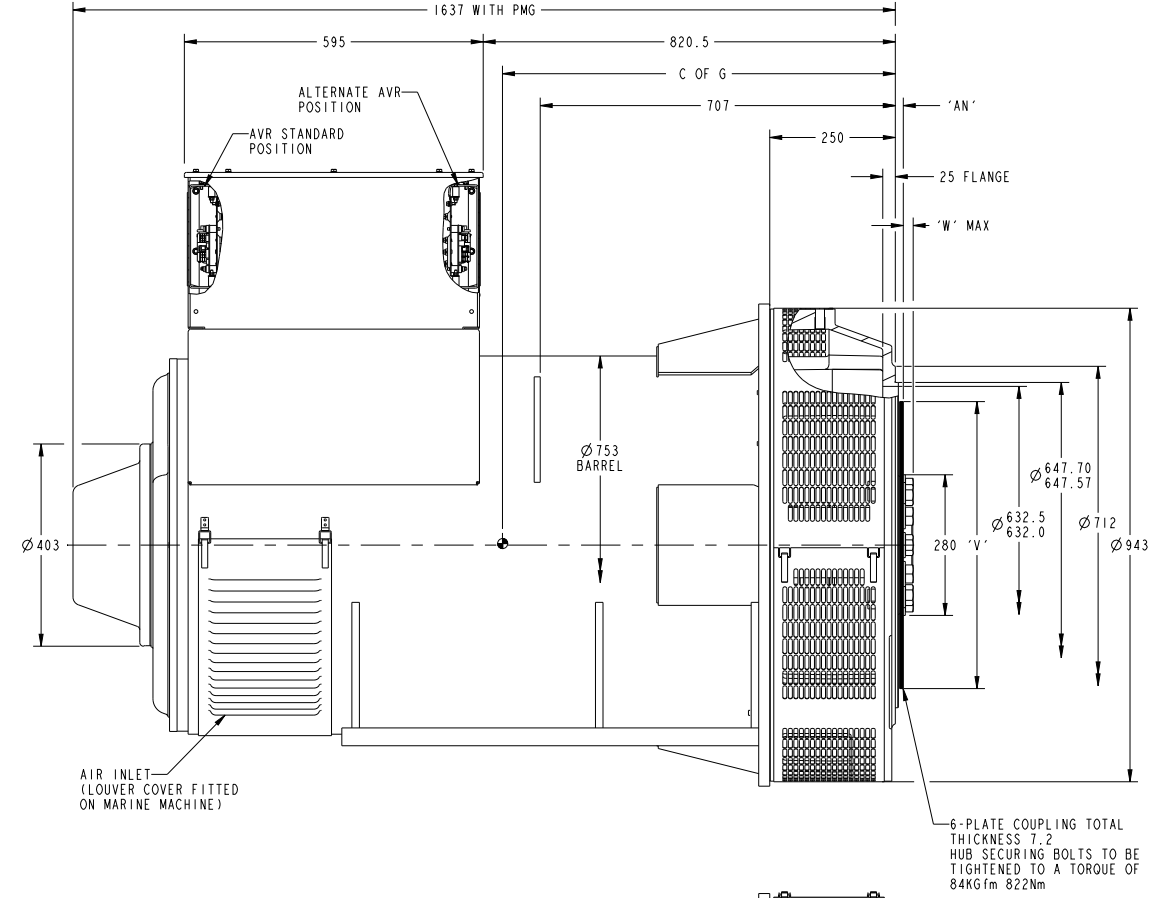
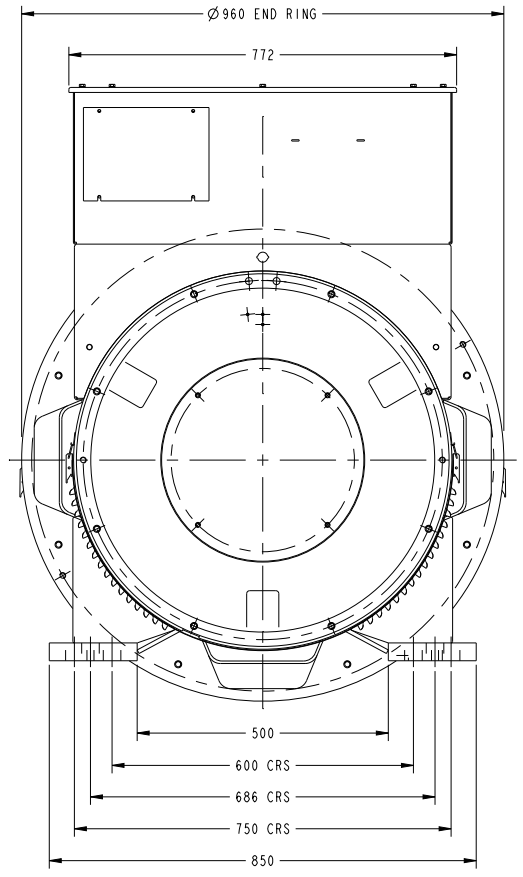


CORE	WEIGHT (KG)	C OF G
H	2836	725

DISC COUPLINGS						
SAE NO.	AN	AR	AS	AT	V	W
18	15.87	6	Ø16.7	543	Ø571.45	25

REL NO	REV NO	REVISION	DRW. CD	APD	DATE
ECO-175830	A	I	RELEASED FOR PRODUCTION	KP	RH SAUNDATTI 26MAR18

NOTE:
 1. CUSTOMER MUST ENSURE THAT AIR INLET AND OUTLET POSITIONS ARE NOT OBSTRUCTED
 2. VENTILATION SLOTS NOT REQUIRED ON SOME REDUCED LOAD APPLICATIONS



UNLESS OTHERWISE SPECIFIED, ALL DIMENSIONS ARE IN MILLIMETERS	SCALE 0.200	DRW NO K_PATIL	CDR R_HANABAR	APD I_SAUNDATTI	DATE 26MAR18	CUMMINS GENERATOR TECHNOLOGIES
DO NOT SCALE PRINT	SCALE	DRW NO	CDR	APD	DATE	DRAWING, GENERAL ASSEMBLY
THIS DOCUMENT AND THE INFORMATION SHOWN THEREON IS UNCLASSIFIED AND UNCONTROLLED UNLESS INDICATED OTHERWISE BY A CONTROLLED INFORMATION IDENTIFICATION LABEL OR BY THE CONTROLLED INFORMATION IDENTIFICATION LABEL	SCALE	DRW NO	CDR	APD	DATE	S611M-H, 1B SAE0-18 (MARINE)
STA	APD	CDR	DATE	SCALE	CDR SHEET	1 OF 1
AO	S6	1	26MAR18	0.200	A059X855	