

AutoCad

4

3

2

1

CORE	WEIGHT(KG)
F	1687

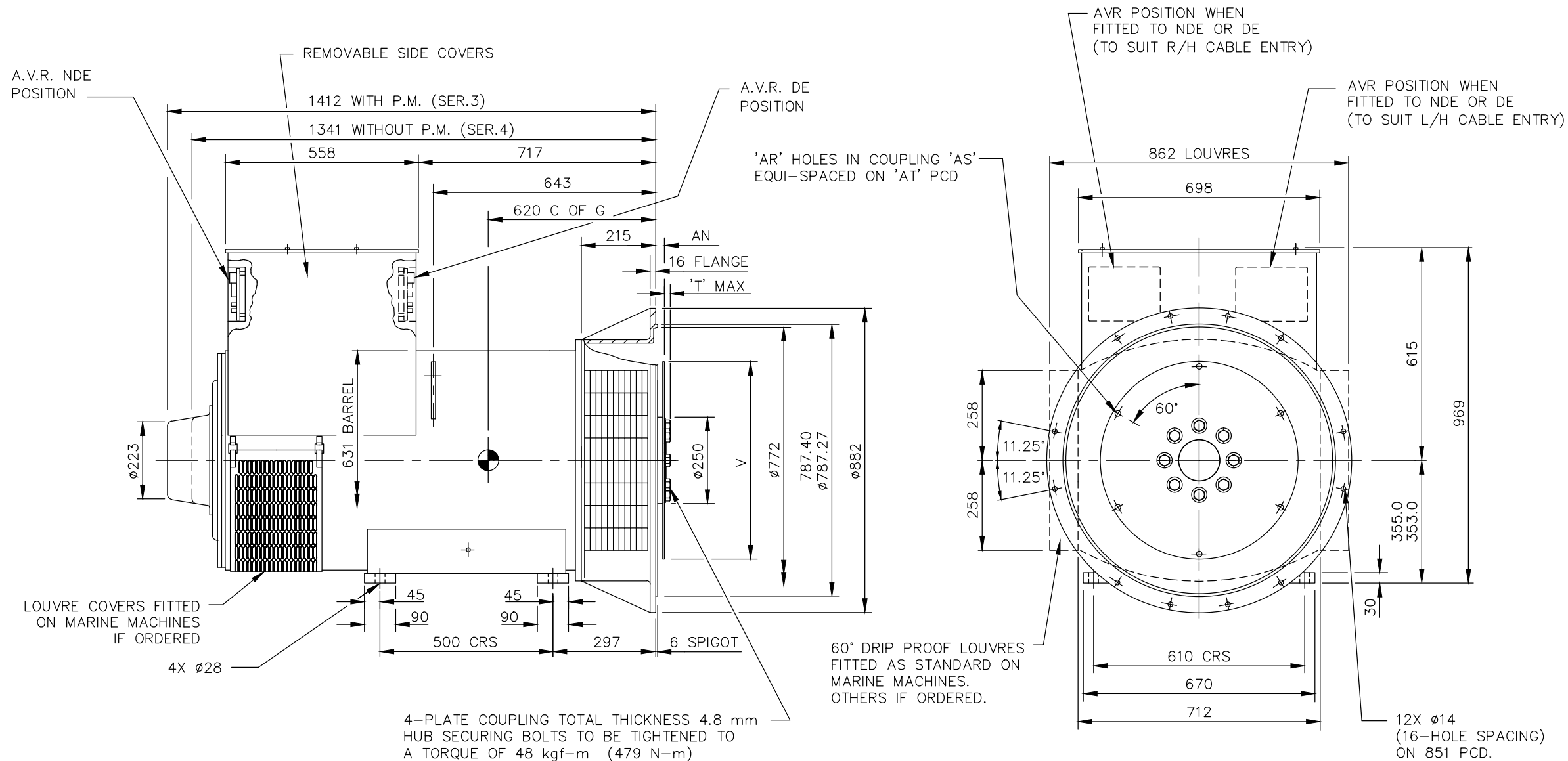
COUPLING DISC						
SAE NO	AN	AR	AS	AT	V	T
18	15.87	6	Ø16.7	543	Ø571.45	23
21	0	12	Ø16.7	641.3	Ø673.05	31

REL NO	REV	NO	REVISION
ECO-180418	A	1	PRODUCTION RELEASE

DWN	CKD	APVD	DATE
VDS	DGL	K.WEJRZANOWSKI	21AUG18

NOTE:

CUSTOMER MAY CUT CABLE ENTRY HOLES AS REQUIRED IN ANY OF THE FOUR TERMINAL BOX SIDES SUBJECT TO POSITION OF AVR, TERMINALS, ETC.



D
C
B
A

D
C
B
A

UNLESS OTHERWISE SPECIFIED, ALL DIMENSIONS ARE IN MILLIMETERS

SIM TO 52-4660
DO NOT SCALE PRINT

DRAWN V.SHIPPARKAR
 CHECKED D.LEE
 APPROVED K.WEJRZANOWSKI
 DATE 21AUG18



CUMMINS GENERATOR TECHNOLOGIES

DRAWING, GENERAL ASSEMBLY
S5 F SAE 00-18/21 1-BRG STD T/BOX

THIS DOCUMENT (AND THE INFORMATION SHOWN THEREON) IS CONFIDENTIAL AND PROPRIETARY AND SHALL NOT BE DISCLOSED TO OTHERS IN HARD COPY OR ELECTRONIC FORM, REPRODUCED BY ANY MEANS, OR USED FOR ANY PURPOSE WITHOUT WRITTEN CONSENT OF CUMMINS INC.

FOR INTERPRETATION OF DIMENSIONING AND TOLERANCING, SEE ASME Y14.5-2009
FIRST USED ON S5

SITE CODE STA

DWG SIZE A4

A056U857

CAD SHEET 1 of 1

4

3

2

1