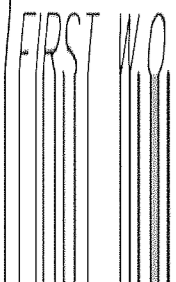


DL15-12659

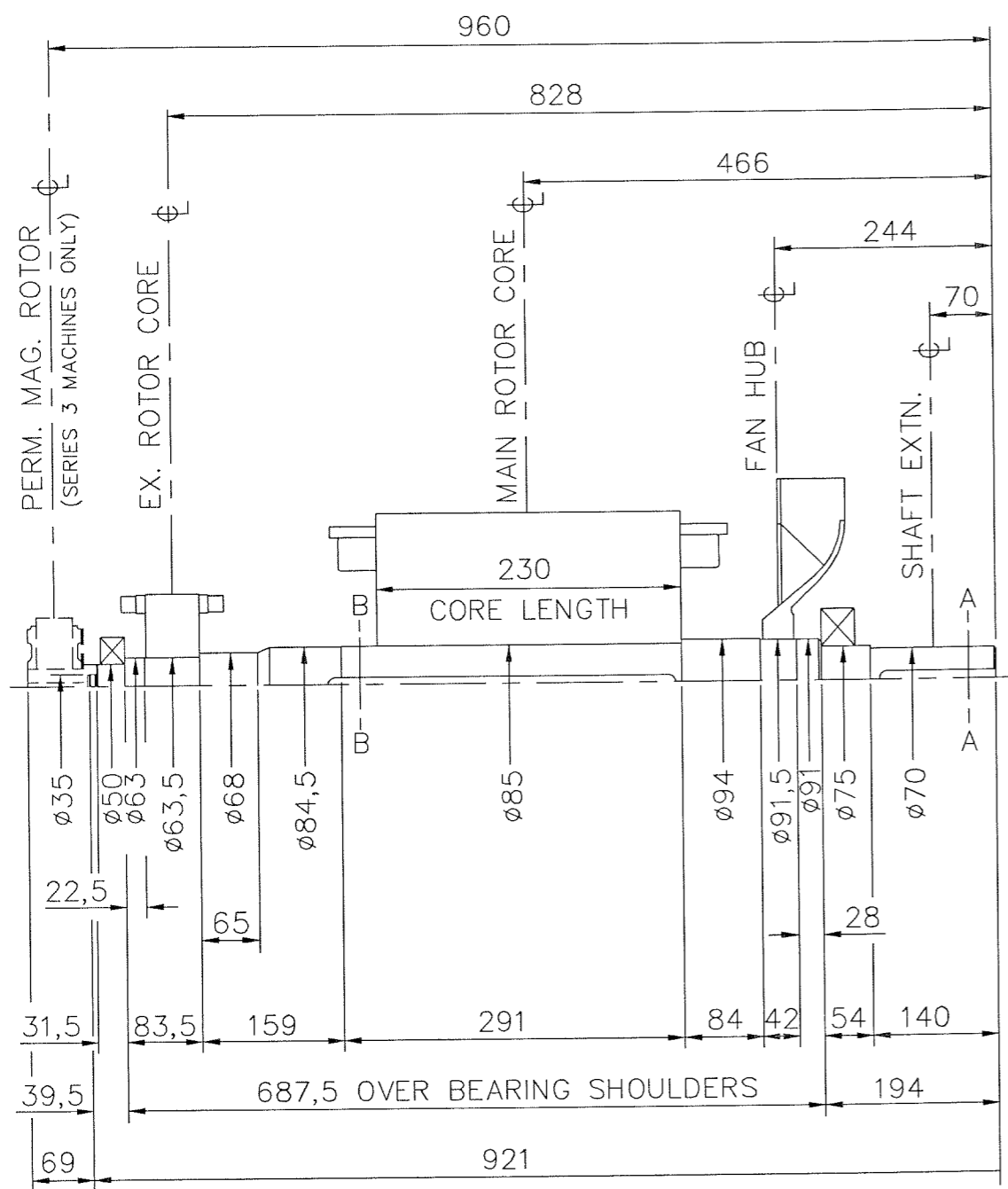
ISSUE
A

IF IN DOUBT-ASK



DO NOT SCALE

NOTES !

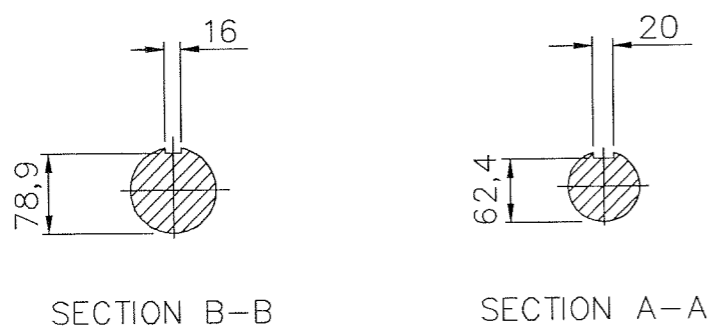


SHAFT STIFFNESS: -
THE STIFFNESS OF THE SHAFT BETWEEN THE MAIN ROTOR CORE ϕ AND THE SHAFT EXTENSION ϕ IS $8,78 \times 10^6$ kgcm/radian
(STIFFENING EFFECT OF MAIN ROTOR CORE IS NOT INCLUDED IN THIS FIGURE).

SHAFT MATERIAL: -
STEEL - 080M40 TO B.S.970 PART 1 (APPROVED BY MARINE AUTHORITIES WHEN APPROPRIATE).
MAXIMUM RECOMMENDED VIBRATORY STRESS LEVEL IN THE SHAFT IS $34,47 \times 10^6$ N/m² FOR A SPEED RANGE OF 0,95 TO 1,1 x NOMINAL SPEED, AND $68,94 \times 10^6$ N/m² FOR RUN THROUGH CONDITIONS. FOR INDUSTRIAL MACHINES. FOR MARINE AUTHORITIES. THEIR APPROPRIATE RULES WILL APPLY.
NEWAGE INTERNATIONAL Ltd SHOULD BE NOTIFIED OF ANY ROTORS NOT COMPLYING WITH THESE RULES.
NEWAGE INTERNATIONAL Ltd BALANCE ROTORS TO COMPLY WITH INTERNATIONAL STD I.S.O. 1940 GRADE 2,5 & B.S.6861 PART 1 GRADE 2,5.
FOR UNBALANCED MAGNETIC PULL (U.M.P.) FORCES REFER TO GENERATOR MANUAL.

COMPONENT	Wt kg	WR ² kgm ²
EX. ROTOR	12,280	0,0726
MAIN ROTOR	99,790	1,0880
FAN	3,389	0,0709
SHAFT	35,642	0,0300
TOTAL	151,101	1,2615
PERM. MAG.	5,450	0,0150
TOTAL	156,551	1,2765

CONVERSION FACTORS		
TO CONVERT	TO	DIVIDE BY
kg	lb	0,453592
kg m ²	lb ft ²	0,04214
kgcm/rad	lbin/rad	1,1521246
N/m ²	lbf/in ²	6894,76



CERTIFIED PRINT (ONLY IF SIGNED) BY DATE	UC274E - TWO BEARING MOMENTS OF INERTIA AND SHAFT DETAILS	SCALE	FIRST W.O.
		NTS	UNIT OF MEASUREMENT MILLIMETRES (mm)
DRAWN S.M.C. 16.11.00 CH'D APP'D	NEWAGE INTERNATIONAL LTD STAMFORD ENGLAND	DL15-12659	ISSUE A

4/2892/5	A	S.M.C.	16.11.00	ORIGINAL ISSUE
MOD'N	ISSUE	DRAWN	DATE	ALTERATION