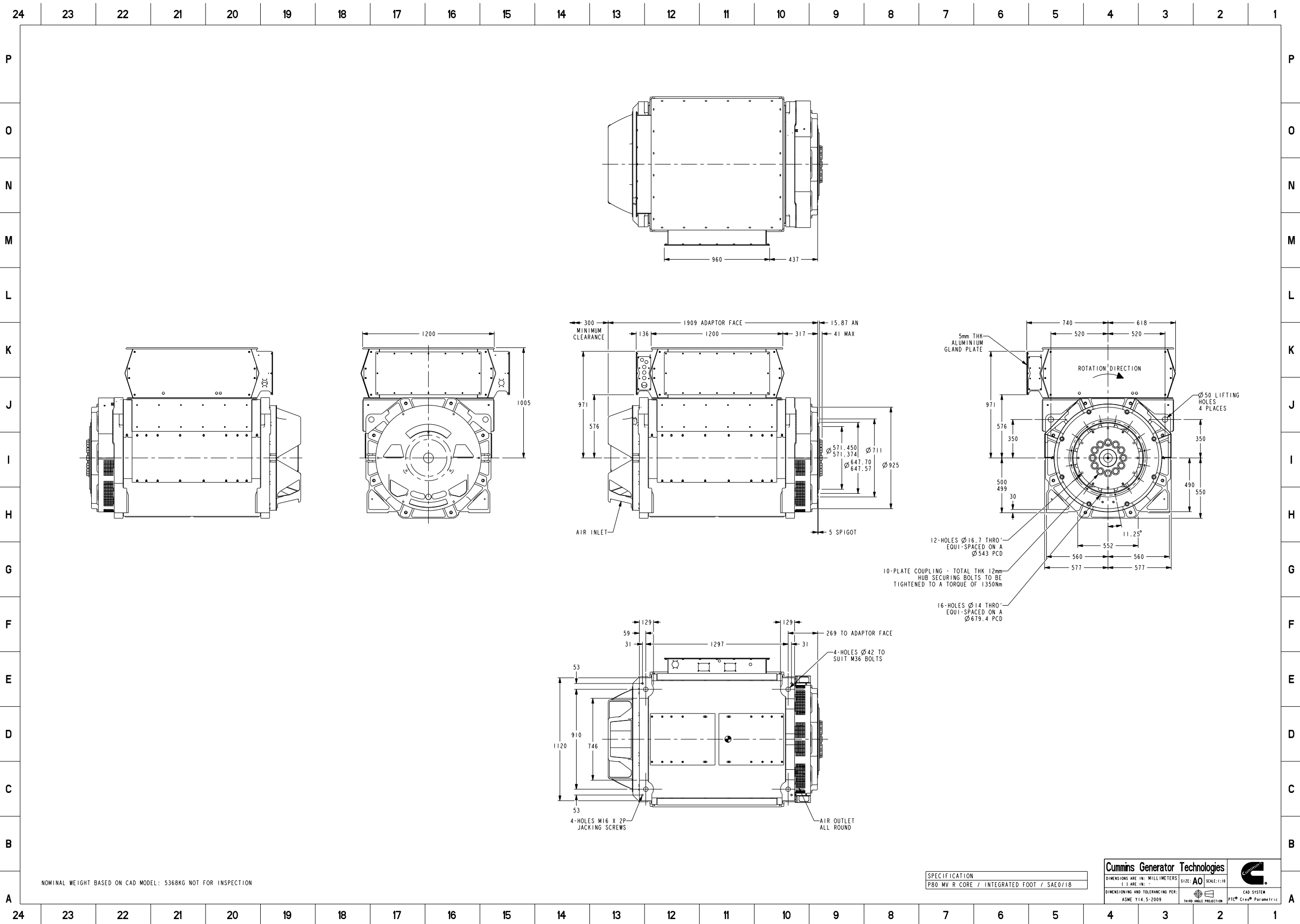


Document Generated: 20APR2021 12:13 GMT



Document Generated: 20APR2021 12:13 GMT



**Part Number: 80-2443**

|                         |                        |                       |                 |
|-------------------------|------------------------|-----------------------|-----------------|
| Change Notice           | CN00032328             | Alternates            |                 |
| Manufacturer Part (MEP) | No                     | Usage                 | Production Only |
| Release Phase Code      | Production (P)         | Drawing Specification | DS80-2443       |
| External Regulations    | No External Regulation |                       |                 |

3D image provided when available for visual reference only.

**Associated Specifications**

| Number     | Name                   | Type                      | Category               | Sub-Category  |
|------------|------------------------|---------------------------|------------------------|---|
| ESA030B356 | SPECIFICATION,MATERIAL | Engineering Specification | Material Specification | Prohibited and Restricted <br>Prohibited and Restricted |

**Drawing Revision Information**

| Description of Change(s)   |
|--|
| DIMENSIONS ADDED/CORRECTED. QUANTITY OF COUPLING DISC HOLES CORRECTED FROM 6 TO 12. WEIGHT AND C OF G UPDATED. |

**Drawing Authorization**

|          |                          |      |           |
|----------|--------------------------|------|-----------|
| Drafter  | Andrew Savill            | Date | 12APR2021 |
| Checker  | Darren George Robert Lee | Date | 20APR2021 |
| Approver | NO APPROVAL REQUIRED     | Date |           |

Document Generated: 20APR2021 12:13 GMT