

AutoCad

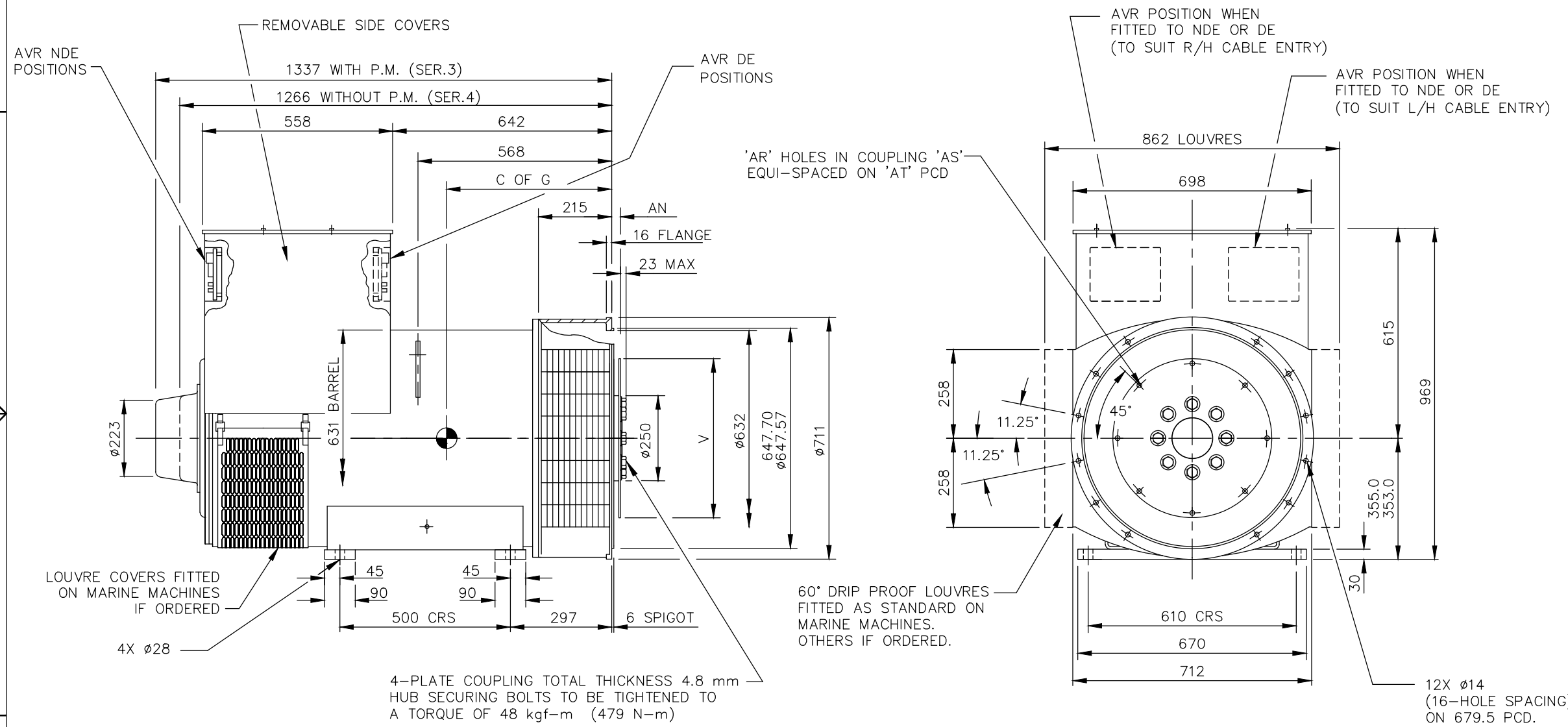
CORE	C OF G (mm)	WEIGHT(KG)
C	555	1265
D	575	1395
E	595	1545

COUPLING DISC					
SAE NO	AN	AR	AS	AT	V
14	25.4	8	Ø13.5	438.1	Ø466.67
18	15.87	6	Ø16.7	543	Ø571.45

REL NO	REV	NO	REVISION	DWN	CKD	APVD	DATE
ECO-180418	A	1	PRODUCTION RELEASE	VDS	DGL	K.WEJRZANOWSKI	20AUG18

NOTE:-

- CUSTOMER MAY CUT CABLE ENTRY HOLES AS REQUIRED IN ANY OF THE FOUR TERMINAL BOX SIDES SUBJECT TO POSITION OF A.V.R, TERMINALS ETC.



UNLESS OTHERWISE SPECIFIED, ALL DIMENSIONS ARE IN MILLIMETERS	SIM TO 52-4636	DRAWN V.SHIPPARKAR		CUMMINS GENERATOR TECHNOLOGIES	
	DO NOT SCALE PRINT	CHECKED D.LEE		DRAWING, GENERAL ASSEMBLY	
SCALE 1:10		APPROVED K.WEJRZANOWSKI	SITE CODE	S5 CDE SAE 0-14/18 1-BRG STD T/BOX	
THIS DOCUMENT (AND THE INFORMATION SHOWN THEREON) IS CONFIDENTIAL AND PROPRIETARY AND SHALL NOT BE DISCLOSED TO OTHERS IN HARD COPY OR ELECTRONIC FORM, REPRODUCED BY ANY MEANS, OR USED FOR ANY PURPOSE WITHOUT WRITTEN CONSENT OF CUMMINS INC.	FOR INTERPRETATION OF DIMENSIONING AND TOLERANCING, SEE ASME Y14.5-2009	DATE 20AUG18	FIRST USED ON S5	STA	DWG SIZE A4
					A056U722
					CAD SHEET 1 of 1