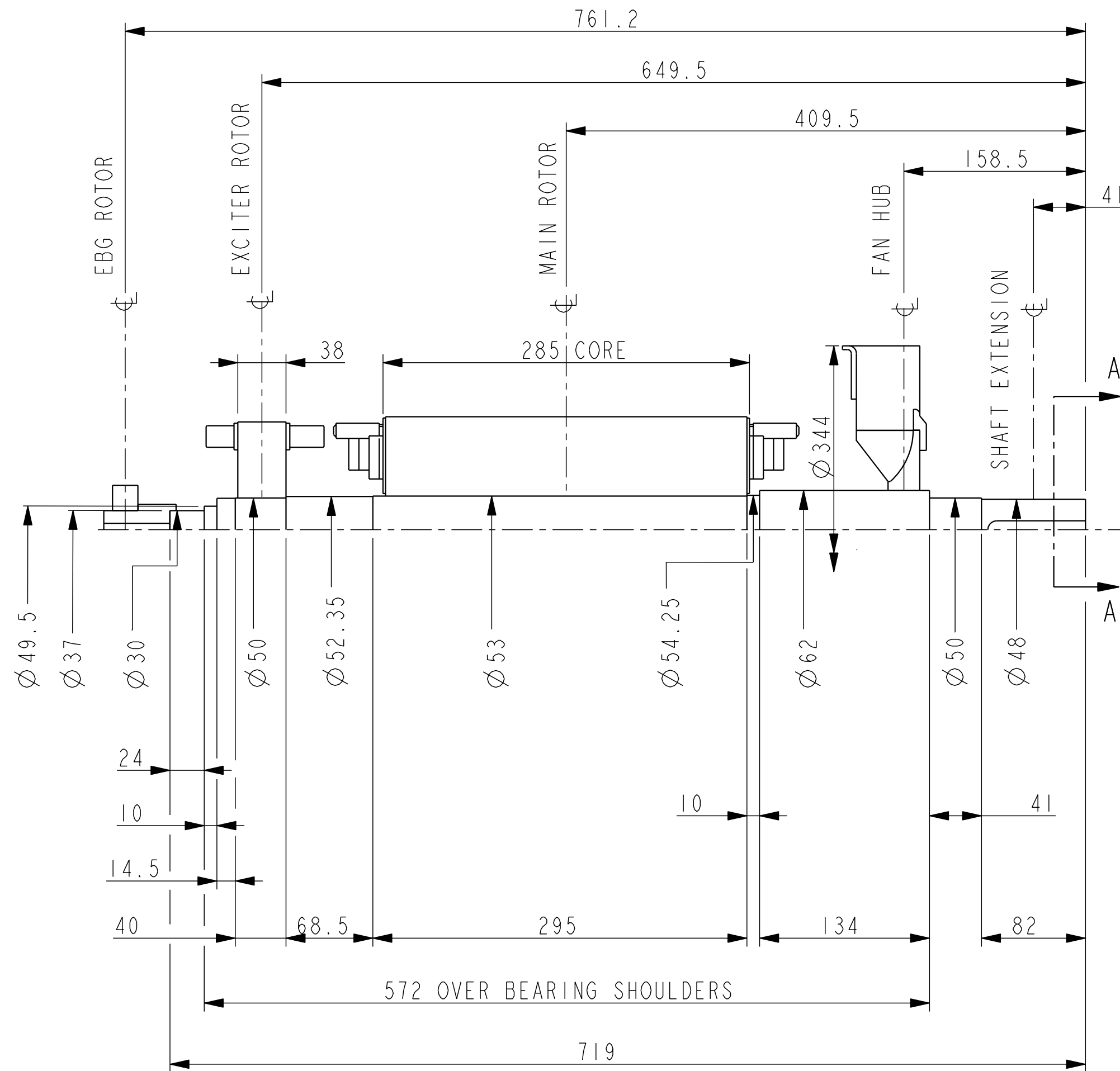


IF IN DOUBT-ASK
DO NOT SCALE



NOTES:-

SHAFT STIFFNESS:-

THE STIFFNESS OF THE SHAFT BETWEEN THE MAIN ROTOR CORE ϕ AND THE SHAFT EXTENSION ϕ IS 1.8516×10^6 kgcm/radian (STIFFENING EFFECT OF MAIN ROTOR CORE IS NOT INCLUDED IN THIS FIGURE)

SHAFT MATERIAL:-

STEEL - C40E TO BSEN 10083-2 2006 (APPROVED BY MARINE AUTHORITIES WHEN APPROPRIATE)
MAXIMUM RECOMMENDED VIBRATORY STRESS LEVEL IN THE SHAFT IS 34.47×10^6 N/m² FOR SPEED RANGE OF 0.95 TO 1.1 x NOMINAL SPEED AND 68.94×10^6 N/m² FOR RUN THROUGH CONDITIONS, FOR INDUSTRIAL MACHINES.

FOR MARINE AUTHORITIES, THEIR APPROPRIATE RULES WILL APPLY.

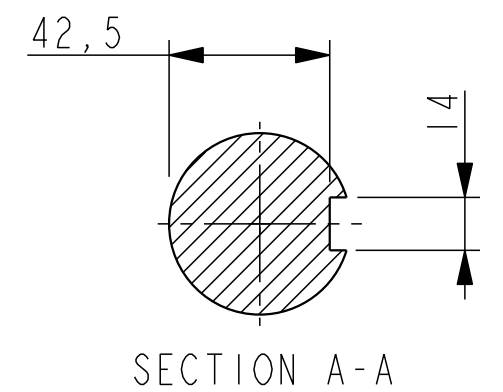
CUMMINS GENERATOR TECHNOLOGIES LTD SHOULD BE NOTIFIED OF ANY ROTORS NOT COMPLYING WITH THESE RULES. CUMMINS GENERATOR TECHNOLOGIES LTD BALANCE ROTORS TO COMPLY WITH INTERNATIONAL STD ISO 1940 PARTS 1 AND 2 . BALANCE GRADE 2.5.

FOR UNBALANCED MAGNETIC PULL (U.M.P.) REFER TO THE FACTORY.

APPROVED DOCUMENT

CONVERSION FACTORS		
TO CONVERT	TO	DIVIDE BY
kg	lb	0.453592
kgm ²	lbft ²	0.04214
kgcm/rad	lbin/rad	1.1521246
N/m ²	lbf/in ²	6894.76

COMPONENT	MASS (kg)	WR ² (kgm ²)
SHAFT	12.481	0.0046
FAN	1.664	0.0144
MAIN ROTOR	50.430	0.2307
EXCITER ROTOR	6.408	0.0249
TOTAL WITHOUT EBG ROTOR	70.983	0.2746
EBG ROTOR	1.701	0.0017
TOTAL WITH EBG ROTOR	72.684	0.2763



CONFIDENTIAL PROPERTY OF CUMMINS GENERATOR TECHNOLOGIES LTD.						PI4J TWO BEARING MOMENTS OF INERTIA AND SHAFT DETAILS		
MATERIAL PROPS	-	DIMENSIONS IN MILLIMETRES (MM) AT 20°C	PROJECTION			SCALE	MATERIAL	
FINISH SPEC	-					3:10	-	
GEOMETRY SPEC	-	SURFACE FINISH VALUES IN MICRO METRES	WEIGHT =			DRG. SIZE	CASTING No	
ASSEMBLY SPEC	-		-			C	-	
PERFORMANCE SPEC	-	UNLIMITED DIMS ± 0.25	DRAWN	BSR	07/05/07	REL. PHASE	PART No	
QUALITY SPEC	-		CHECKED	DSG	25/6/07	P	L15-13198	
			APPROVED	DW	25/6/07	Pro/ENGINEER	SHEET	I OF I SHEETS

MOD.	ISSUE	DRAWN	DATE	MODIFICATION
4-8440-77	A	BSR	07/05/07	ORIGINAL ISSUE