

D66-2049

ISSUE C

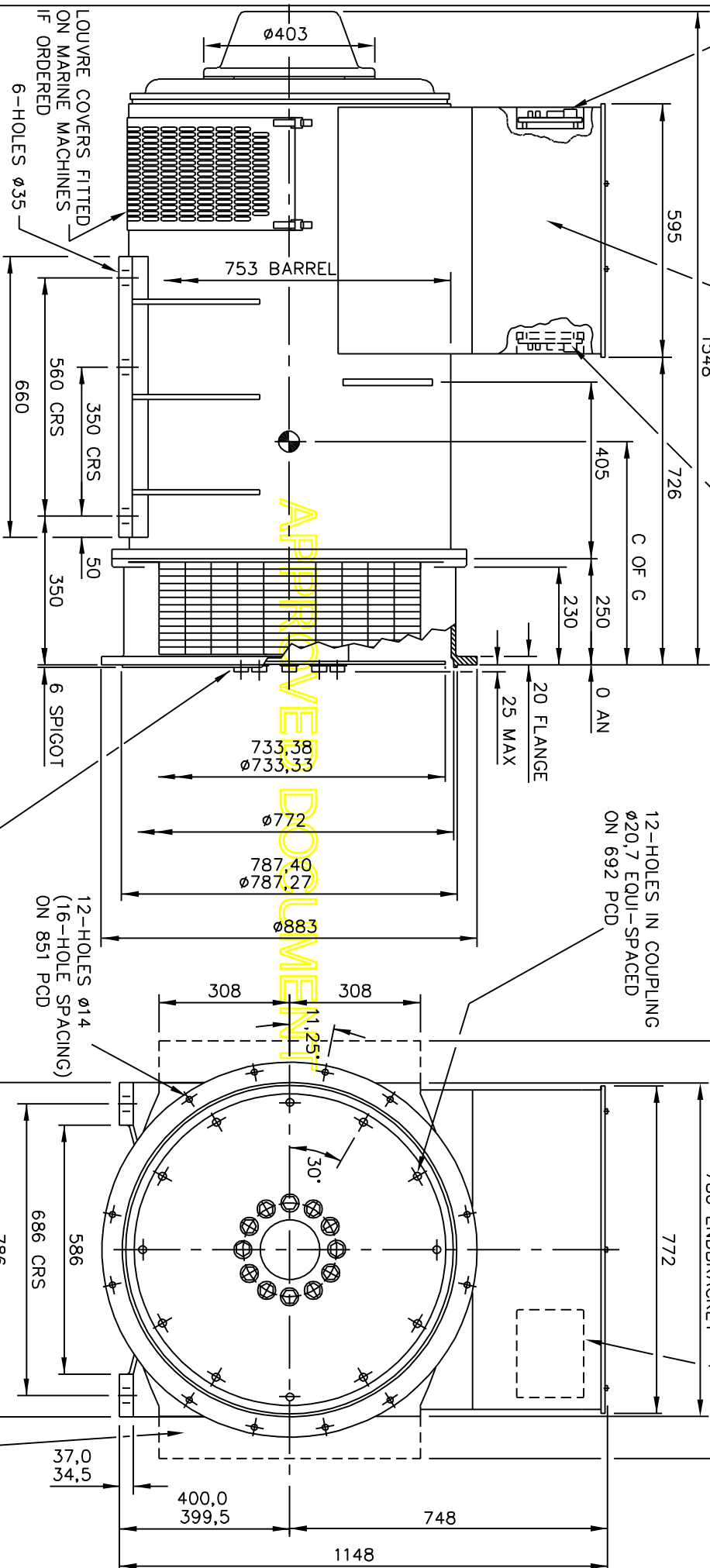
IF IN DOUBT-ASK  
DO NOT SCALE

INDICATES POSITION OF A.V.R.

A.V.R. STANDARD POSITION

REMOVABLE SIDE COVERS

A.V.R. ALTERNATIVE POSITION



CORE	4-POLE	6-POLE
G	680	640
H	690	670
J	705	685
K		705

NOTE:-  
CUSTOMER MAY CUT CABLE ENTRY HOLES AS REQUIRED IN ANY OF THE FOUR TERMINAL BOX SIDES SUBJECT TO POSITION OF AVR, TERMINALS ETC.

6-PLATE COUPLING TOTAL THICKNESS  
7.2. HUB SECURING BOLTS TO BE  
TIGHTENED TO A TORQUE OF  
84kgf m 822N m

60° DRIP PROOF LOUVRES  
FITTED AS STANDARD ON  
MARINE MACHINES  
OTHERS IF ORDERED

4-8664-02	C	USD	15.09.06	CHANGE OF COMPANY NAME
4-7147-11	B	U.S.D	08.02.06	NDE LOUVRED PANEL REPLACED BY MESH COVER
4/2766/2	A	A.J.B	10.10.00	ORIGINAL ISSUE
MOD'N	ISSUE	DRAWN	DATE	ALTERATION

CERTIFIED PRINT	(ONLY IF SIGNED)
BY	
DATE	
DRAWN	A.J.B, 10.10.00
CH'D	
APP'D	

HC/CG6 ALTERNATOR  
1-GHJ(4 POLE)/1-GHK(6 POLE)  
ADAPTOR - SAE00  
COUPLING - SAE24  
STANDARD T/BOX  
CUMMINS GENERATOR TECHNOLOGIES LTD.  
STAMFORD ENGLAND

SCALE	FIRST W.O.	UNIT OF MEASUREMENT
1:10		MILLIMETRES (mm)

D66-2049 ISSUE C