

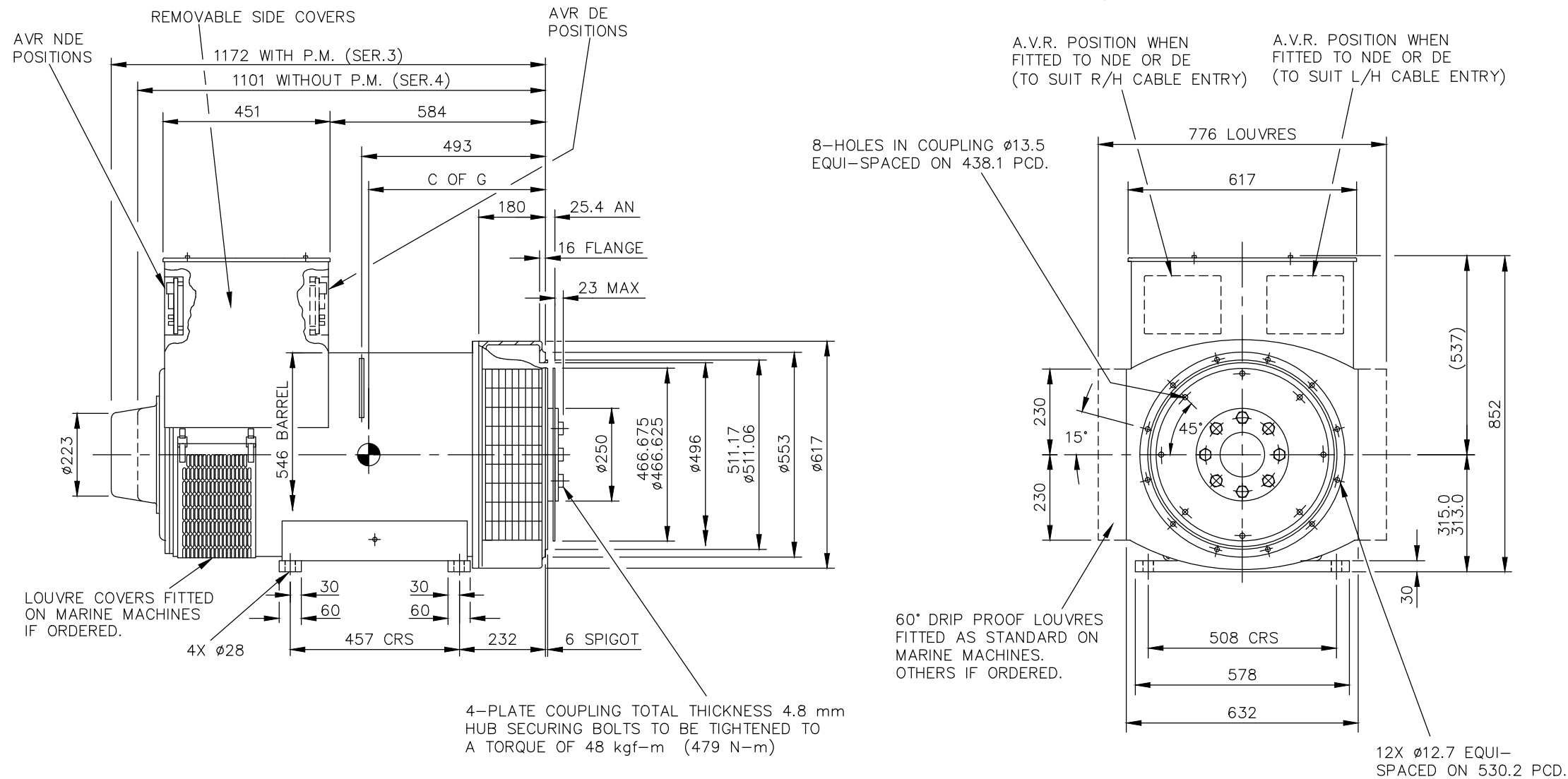
AutoCad

CORE	C OF G (mm)	WEIGHT(KG)
C	463	850
D	483	940
E	504	1024

REL NO	REV	NO	REVISION	DWN	CKD	APVD	DATE
ECO-171701	B	1	ZONE D4,ADDED WEIGHT (850KG) FOR C CORE	SA	PN	S_NARAYANAN	04SEP17
		2	ZONE D4,ADDED WEIGHT (940KG) FOR D CORE	SA	PN	S_NARAYANAN	04SEP17
		3	ZONE D4,ADDED WEIGHT (1024KG) FOR E CORE	SA	PN	S_NARAYANAN	04SEP17
		4	IN TITLE BLOCK DESCRIPTION S4L1S WAS S4	SA	PN	S_NARAYANAN	04SEP17

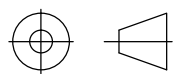
NOTE: -

- CUSTOMER MAY CUT CABLE ENTRY HOLES AS REQUIRED IN ANY OF THE FOUR TERMINAL BOX SIDES SUBJECT TO POSITION OF A.V.R, TERMINALS ETC.



UNLESS OTHERWISE SPECIFIED, ALL DIMENSIONS ARE IN MILLIMETERS

SIM TO 41-4528
DO NOT SCALE PRINT



SCALE
1:10

THIS DOCUMENT (AND THE INFORMATION SHOWN THEREON) IS CONFIDENTIAL AND PROPRIETARY AND SHALL NOT BE DISCLOSED TO OTHERS IN HARD COPY OR ELECTRONIC FORM, REPRODUCED BY ANY MEANS, OR USED FOR ANY PURPOSE WITHOUT WRITTEN CONSENT OF CUMMINS INC.

DRAWN S_BALAMURUGAN
CHECKED A_BIRARI
APPROVED B_SURVE
DATE 30JAN17



CUMMINS GENERATOR TECHNOLOGIES

DRAWING, GENERAL ASSEMBLY

S4L1S CDE 1-BRG SAE 1/14 STD T/BOX

FOR INTERPRETATION OF DIMENSIONING AND TOLERANCING, SEE ASME Y14.5-2009

SITE CODE

STA

DWG SIZE
A4

A057B569

CAD SHEET
1 OF 1