

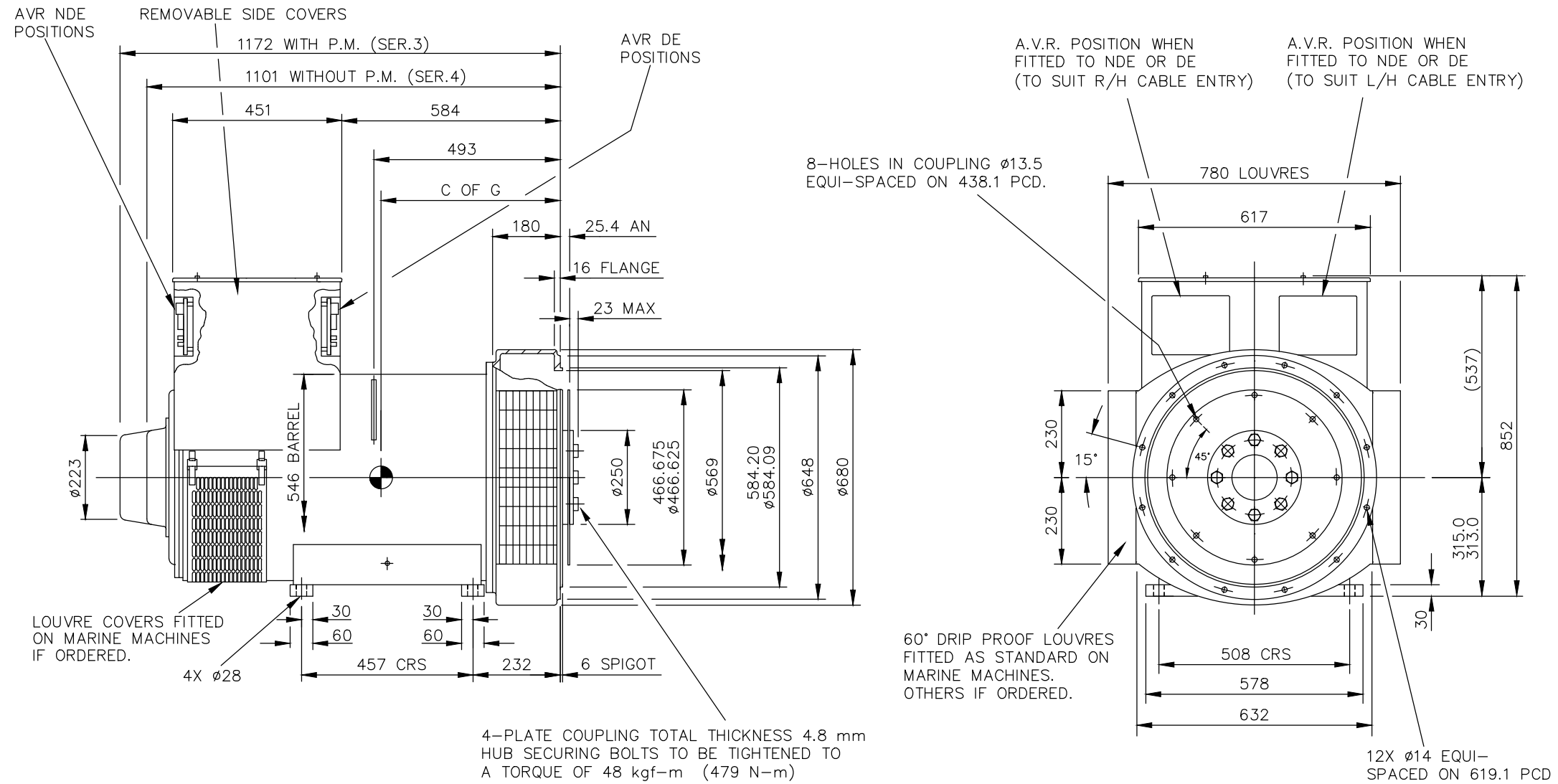
AutoCad

| CORE | C OF G (MM) | WEIGHT(KG) |
|------|-------------|------------|
| C    | 463         | 850        |
| D    | 483         | 940        |
| E    | 504         | 1024       |

| REL NO     | REV | NO | REVISION                                    | DWN | CKD | APVD        | DATE    |
|------------|-----|----|---|-----|-----|-------------|---------|
| ECO-172223 | C   | 1  | ZONE D4,ADDED WEIGHT (850 KG) FOR C CORE    | SA  | PN  | S_NARAYANAN | 15SEP17 |
|            |     | 2  | ZONE D4,ADDED WEIGHT (940 KG) FOR D CORE    | SA  | PN  | S_NARAYANAN | 15SEP17 |
|            |     | 3  | ZONE D4,ADDED WEIGHT (1024 KG) FOR E CORE   | SA  | PN  | S_NARAYANAN | 15SEP17 |
|            |     | 4  | IN TITLE BLOCK, DESCRIPTION S4L1S WAS S4L1D | SA  | PN  | S_NARAYANAN | 15SEP17 |

NOTE: -

- CUSTOMER MAY CUT CABLE ENTRY HOLES AS REQUIRED IN ANY OF THE FOUR TERMINAL BOX SIDES SUBJECT TO POSITION OF A.V.R, TERMINALS ETC.

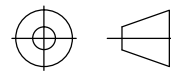


UNLESS OTHERWISE SPECIFIED, ALL DIMENSIONS ARE IN MILLIMETERS

SIM TO 41-4533

DO NOT SCALE PRINT

SCALE 1:10



THIS DOCUMENT (AND THE INFORMATION SHOWN THEREON) IS CONFIDENTIAL AND PROPRIETARY AND SHALL NOT BE DISCLOSED TO OTHERS IN HARD COPY OR ELECTRONIC FORM, REPRODUCED BY ANY MEANS, OR USED FOR ANY PURPOSE WITHOUT WRITTEN CONSENT OF CUMMINS INC.

DRAWN S\_BALAMURUGAN

CHECKED A\_BIRARI

APPROVED B\_SURVE

DATE 30JAN17

FOR INTERPRETATION OF DIMENSIONING AND TOLERANCING, SEE ASME Y14.5-2009

FIRST USED ON S4



SITE CODE

STA

CUMMINS GENERATOR TECHNOLOGIES

DRAWING, GENERAL ASSEMBLY

S4L1S CDE 1-BRG SAE 0.5/14 STD T/BOX

DWG SIZE A4

A057B576

CAD SHEET 1 OF 1